



Artery Research

ISSN (Online): 1876-4401

ISSN (Print): 1872-9312

Journal Home Page: <https://www.atlantis-press.com/journals/artres>

Anatomic variations of the renal arteries from a local study population using 3D computed tomography angiography reconstruction images from a reference hospital in Cali, Colombia

Juan S. Calle Toro, Gabriel Prada, Sara Yukie Rodriguez Takeuchi, Robinson Pachecho, Gloria Baena, Ana M. Granados

To cite this article: Juan S. Calle Toro, Gabriel Prada, Sara Yukie Rodriguez Takeuchi, Robinson Pachecho, Gloria Baena, Ana M. Granados (2016) Anatomic variations of the renal arteries from a local study population using 3D computed tomography angiography reconstruction images from a reference hospital in Cali, Colombia, Artery Research 14:C, 22–26, DOI: <https://doi.org/10.1016/j.artres.2016.02.004>

To link to this article: <https://doi.org/10.1016/j.artres.2016.02.004>

Published online: 3 December 2019



Anatomic variations of the renal arteries from a local study population using 3D computed tomography angiography reconstruction images from a reference hospital in Cali, Colombia

Juan S. Calle Toro ^{a,*}, Gabriel Prada ^a,
Sara Yukie Rodriguez Takeuchi ^a, Robinson Pachecho ^b,
Gloria Baena ^c, Ana M. Granados ^d

^a Universidad ICESI, Colombia

^b Statistics and Epidemiology, Fundación Clínica Valle del Lili, Colombia

^c Universidad del Valle, Colombia

^d Radiology unit, Fundación Clínica Valle del Lili, Colombia

Received 21 November 2015; received in revised form 6 January 2016; accepted 4 February 2016
Available online 22 February 2016

KEYWORDS

Renal artery;
Angiography
reconstruction;
Anatomical variation

Abstract *Purpose:* With the advances in the new image techniques and 3D modeling, angiography computed tomography (A-CT) has become a very useful image for studying vessels. Renal artery (RA) variations are common, and have a clinical relevance in pre-operative planning. There are several descriptive studies made in high income countries, but there are not many in middle and low income countries. Our objective was to describe prevalence of RA variations in a study population in Cali, Colombia.

Methods: A database was made from a selection of A-CT 3D images from January 1, 2012 to September 30, 2014, from which the RA could be; visualized. Patients under 18 were excluded, also with no 3D A-CT, or not of; Colombian nationality. Frequencies, percentages were calculated using; Excel.

Results: A total of 560 patients were selected, from which 296 fulfilled all criteria. The most common causes of performing the A-CT were pathologies of the Aorta. Variations of the RA were present in 52% of the patients, 54% were man, 77% had unilateral variation and 33% had bilateral variations, 58% in the right side. The two most common variations were extra Renal arteries (hiliar and polar) seen in 70% of the patients.

* Corresponding author. Tel.: +57 3188010839.

E-mail addresses: ctjuans@gmail.com (J.S. Calle Toro), pradagabriel92@gmail.com (G. Prada), syukierodriguez@gmail.com (S.Y. Rodriguez Takeuchi), robinson.pachecho.73@gmail.com (R. Pachecho), gpbaena@hotmail.com (G. Baena), anamaria.granados@gmail.com (A.M. Granados).

Conclusions: Prevalence of RA can be as normal as the usual anatomy, more commonly found in men, unilateral and in the right side. The most common variations are accessories arteries to the polar zone and the renal hilum, but early division (double and triple) arteries are also common.

© 2016 Association for Research into Arterial Structure and Physiology. Published by Elsevier B.V. All rights reserved.

Introduction

Knowledge of the Renal artery (RA) variations is not only important for academic purposes, but also has clinical implications.^{1,2} Studies has shown the importance the study of RA for the treatment of patients that are going to surgeries as kidney transplantation, renal artery stenosis, open or endovascular treatment for abdominal aortic aneurysm.³

The study of the renal vessels in the past was performed using invasive methods as catheter angiography.⁴ Nowadays new diagnostic techniques such as angiography Computed tomography (A-CT) has become in many reference centers the gold standard because is noninvasive, fast, and reliable.⁵ Three-dimensional image reconstruction is additionally easily interpreted for non radiologist physicians and has a sensitivity of 100% for detecting variations.^{6,7}

The number of minimally interventional procedures has increased worldwide, and the use of A-CT has shown a positive impact in the surgical planning in surgeries as in kidney transplantation surgery.⁸ Our institution is a Latin American reference hospital for advanced surgical procedures such as kidney, pancreas, and liver transplant.^{9,10} Although prevalence and characterization of RA variations has been well described in studies in population from high-income countries, in which studies report a prevalence ranging from 30 to 60%, there are few studies in middle and low-income countries.^{11,12} The purpose of this study was to determine the prevalence of RA variations and the presence of Fibromuscular dysplasia (FMD) in a cohort of patients using 3D A-CT images from a reference hospital located in Cali, Colombia.

Methods

Patients

The institutional ethics committee approved this study, and all patients gave consent. All abdominal A-CT with 3D reconstruction from January 1st of 2012 to September 30 of 2014 were included to create a database of the anatomical RA variations, from which we exclude patients with less than 18 years at the time of the study, without 3D reconstruction A-CT, or not Colombian origin.

Image technique: angiographic computed tomography

A medical-surgical specialist (vascular surgeon, transplant surgeon or oncologist) ordered A-CT to determine several

characteristics of the relationship between the vessels and the organs related to diagnostic and/or treatment.

The images were obtained using a 64-row MDCT scanner (LightSpeed VCT, GE Healthcare) with a symmetrical matrix of 64 detector rows, and slice thickness of 0.625 mm. A dual head injector was used for the administration of contrast material, which allows the simultaneous injection of a compact iodine bolus followed by a normal saline bolus, both of them at the same injection rate of 4.5–5.0 ml/s.

Analyses of the images were performed on a computer with a Siemens console equipped with Syngo software and GE centricity RIS/PACS-IW Solution. A multiplane reconstruction (MPRs) in the three spatial planes and three-dimensional reconstructions (3D) using maximum intensity projection (MIP) and volume rendering (VR) was performed. Selection of the CTA images to analyze were based on those ordered as Thoracic and abdominal Aorta, renal, splenic and hepatic arteries, and contrasted total abdominal CT.

Image interpretation

All images were evaluated by two different physicians of different levels of expertise. First a resident in radiology evaluated the CT 2D axial images obtained by MDCT angiography as well as the post-processed 3D VRT, MIP and MPR images, in order to make a diagnosis. Then all images were reviewed by a former radiologist with more than 10 years of practice in corporal image A-CT.

For image interpretation RA was defined as any artery arising from the abdominal aorta or direct branches and ending in the kidney, regardless of the location and the course,¹³ and any other anatomical different course were considered as a variation.

Statistical analyses

Frequencies and percentages were calculated using Excel® for the prevalence of RA and FMD across sex and age, and location of the anatomical variation. It was considered statistical significant a level of significance lower of 5% ($p < 0.05$).

Results

There were 560 patients that fulfilled the criteria for the study, after exclusion criteria 296 were included, and from them 154 (52%) were men and 142 (48%) were women. The mean age was 55, the median age was 58, with minimum age was 19 and the maximum age was 96 (Table 1).

Table 1 Characteristics of population with RA variations.

	Total (%) n = 153	p-value
Sex		0.16
Men	83 (54%)	
Women	70 (46%)	
Age		
18–35	18 (12%)	
35–50	27 (18%)	
>50	105 (70%)	
Origin		
Colombian	152 (99%)	
Non-Colombian	1 (0.6%)	

In those patients with anatomical variations the most common cause to perform A-CT was a presumed diagnosis of any disease affecting the Aorta artery as aneurism, aneurism rupture, and aortic dissection seen in 171 (58%) patients, the second cause was related to evaluation of donors and receptors of renal transplantation in 77 (26%) patients, the third cause was related to hepatic transplantation in 30 (10%) patients, and the fourth was related to miscellaneous pathologies affecting the liver and kidneys, seen in 18 (6%) patients (Table 2).

Normal anatomy was found in 143 patients (48%), and the total prevalence of variations of the RA was found in 153 patients (52%), which 83 (54%) were man and 70 (46%) woman ($p = 0.16$), and were observed more in right than left side (58 vs 42%, $p = 0.002$). From the 153 patients with RA variations, 117 (77%) had unilateral variation and the other 35 (33%) had unilateral (Tables 1 and 2).

From those with unilateral variations the most common observed was the presence of an accessory artery to a polar zone of the kidney, seen in 66 patients, from those 40 were right and 26 left. The second most common was the presence of accessory artery to the renal hilum seen in 39 patients, 25 were right and 14 were left. The third most common was the presence of a double RA seen in 11 patients, 6 were right and 5 were left. The least common unilateral variation seen was the presence of a right triple RA seen in 2 patients (Tables 3 and 4).

Bilateral variations were observed in 35 patients. In the right side the most common variation was accessories arteries to polar zones of the kidney, seen in 20 patients, the next was accessories arteries to the renal hilum seen in 8 patients, and the least common was the presence of a double RA seen in 7 patients. In the left side the most

Table 2 Frequency of RA variations by suspected diagnosis.

Diagnosis	Total	Variation
Aorta disease (aneurysm, dissection, stenosis)	123	63 (51%)
Transplant (liver, kidney)	88	48 (54%)
Secondary HTN (Renal artery stenosis)	58	28 (48%)
Blank CT ^a	27	14 (50%)
Total	296	153 (51%)

^a No definitive diagnosis after CT-scan.

Table 3 Location of RA variations.

Side ^a		0.002
Right	109 (58%)	
Left	79 (42%)	
Location		0.0002
Unilateral	118 (77%)	
Bilateral	35 (33%)	

^a Bilateral variations account as additional number of the n.

Table 4 Unilateral RA variations.

	Total (%) n = 118	Left	Right
Hiliar accessory	39 (33%)	14	25
Polar accessory	66 (55%)	26	40
Double RA	11 (9%)	5	6
Triple RA	2 (1%)		2

common variation was the presence of accessories arteries to polar zones of the kidney, seen in 23 patients, the second was the presence of double RA seen in 7 patients, the third common was the presence of accessories to renal hilum seen in 4 patients, and least common was the presence of a triple RA seen in 1 patient (Tables 3 and 5).

The prevalence RA with morphology compatible with fibromuscular dysplasia (FMD) was found in 10 (3.4%). From those 9 were women and 1 man (10%). The medical record of the patients was reviewed, and 1 of them had reported arterial hypertension as the cause to order the image.

Discussion

The prevalence of anatomical variations of the RA found in this study population was of 52%, unilateral variations were more common than bilateral (77 vs 33%), more in right than left side (58 vs 42%, $p = 0.002$), and more in men than women (54 and 46%, $p = 0.16$). Studies have reported that right side usually is the most common side with the anatomical variation,^{3,5,10} and this is important in the clinical and surgical approach.^{6,8,13–15} The difference in prevalence between sex and in certain diseases has been explained as a consequence of more exposition to A-CT^{1,2,12,16–19}; because men have more aortic and renovascular diseases, they get more A-CT images, and more RA variations are detected, hence we did not find a statistical significant differences^{1,2,16,17} (Tables 1 and 2).

Table 5 Bilateral RA variations.

	Total (%) n = 70 ^a	Left	Right
Hiliar accessory	12 (17%)	4	8
Polar accessory	43 (61%)	23	20
Double RA	14 (20%)	7	7
Triple RA	1 (1%)		1

^a From 35 patients with bilateral variation.

The presence of an accessory artery to polar zones of the kidney was the most common variation found in unilateral and bilateral variations. Embryological studies have hypothesized that the process of formation of the kidneys that has many stages could be a cause for this kind of variations. For example during the mesonephric stage the kidneys are located in the pelvis receiving blood supply from the Iliac vessels (mesonephric arteries), until locates at L1-2 level.^{13,19,20} Clinically this type of variation is important in the surgical approach of nephrectomy and in the vascular management of renovascular hypertension.^{2-4,6} Also this variation has been associated with obstruction of the ureter leading to hydronephrosis, and this to a series of other ways unnecessary exams.¹⁴

The second most common variations observed was the presence of accessories arteries to the renal hilum. Embryological origin of this variation has been explained in the same way as the polar accessories arteries, because both of them are considered extra-renal arteries that were precursors of the normal RA. In a similar way, clinical relevance of this variations remains also in renal transplantation because technically it takes more time to do the anastomoses.²

Other less common variations that we have found are the presence of multiple renal arteries (doubles or triples arteries) (Figs. 1 and 2). Some studies have reported prevalence ranging from 2 to 14%, which is the lower prevalence found in our study. Clinically this variation makes any surgical procedure involving kidney harder because the needs to do the vascular an anatomists twice, and some studies have reported more complications and grafting loss from those patients that received a kidney with anatomical variations.²¹

The prevalence of RA in our population with morphology compatible with FMD remains within the limits of what has been reported in other studies between 3 and 5%, affecting more women,²² but it was found that more patients were asymptomatic at the time of diagnosis. This is important because early detection of this disease, could probably lead to a better prognosis.²³

Considering the high prevalence of these variations and the clinical importance of knowing about such variations,



Figure 1 Triple RA for the right kidney.

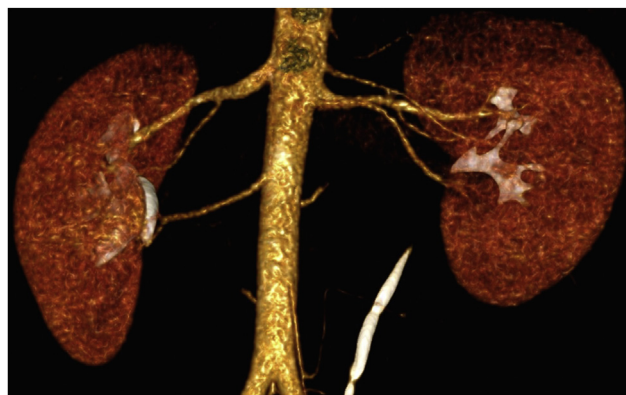


Figure 2 Double RA and hilar RA for the left kidney, and hilar RA for the right kidney.

worldwide protocols for abdominal organ transplants has been modified to incorporate A-CT prior to the surgery (46), preventing negative outcomes related to this.

Limitations

Information is limited from one local clinic database with patients from the same hospital, however this is one of the few studies in middle and low income countries, and the only one in Colombia.

Conclusions

Variations are almost as frequent as normal anatomy in the RA; knowing their existence could help the surgeon or the interventional radiologist to avoid catastrophic complications and make a safer surgery for the patient. Additional studies are needed in different clinical settings.

Financial support

Authors declare no financial support for this research.

Ethical committee

This study was approved by our ethical committee, and does comply with the laws in Colombia.

Conflict of interests

None declared.

References

1. Cruzat C, Olave E. Irrigación Renal: Multiplicidad de Arterias. *Int J Morphol* 2013;31:911-4.
2. Aldana G, Patiño G, Chadid T. Implicaciones clínicas y quirúrgicas de las variaciones anatómicas vasculares del riñón. *Rev Ciencias la Salud* 2010;8:61-76.

3. Özkan U, Oğuzkurt L, Tercan F, Kizilkiliç O, Koç Z, Koca N. Renal artery origins and variations: angiographic evaluation of 855 consecutive patients. *Diagn Interv Radiol* 2006;**12**:183–6.
4. Koplay M, Onbas O, Alper F, Gulcan E, Kantarci M. Multiple renal arteries: variations demonstrated by multidetector computed tomography angiography. *Med Princ Pract* 2010;**19**:412–4.
5. Song S-Y, Chung JW, Yin YH, Jae HJ, Kim H-C, Jeon UB, et al. Celiac axis and common hepatic artery variations in 5002 patients: systematic analysis with spiral CT and DSA. *Radiology* 2010;**255**:278–88.
6. Rubin GD, Alfrey EJ, Dake MD, Semba CP, Sommer GF, Kuo PC, et al. Assessment of living renal donors with spiral CT. *Radiology* 1995;**195**:457–62. United States.
7. Johnson PT, Halpern EJ, Kuszyk BS, Heath DG, Wechsler RJ, Nazarian LN, et al. Renal artery Stenosis: CT angiography — Comparison of and maximum intensity projection Algorithms 1. *Artery* 1999;**211**:337–43. United States.
8. Smith PA, Ratner LE, Lynch FC, Corl FM, Fishman EK. Role of CT angiography in the preoperative evaluation for laparoscopic nephrectomy. *Radiographics* 1998;**18**:589–601. United States.
9. Echeverri GJ, Sabogal AN, Caicedo LA, Mesa L, Posada JG, Arango LG, et al. Primer trasplante de islotes realizado en Colombia, experiencia fundación Valle del Lili. *Rev Colomb Endocrinol Diabetes Metab* 2015;**2015**:500–5.
10. Li Petri S, Gruttadauria S, Pagano D, Echeverri GJ, Di Francesco F, Cintonino D, et al. Surgical management of complex liver trauma: a single liver transplant center experience. *Am Surg* 2012;**78**:20–5. United States.
11. Saldarriaga B, Pinto S a, Ballesteros LE. Morphological expression of the renal artery: a direct anatomical study in a colombian half-caste population. *Int J Morphol* 2008;**26**:31–8.
12. Satyapal KS, Haffejee AA, Singh B, Ramsaroop L, Robbs JV, Kalideen JM. Additional renal arteries incidence and morphometry. *Surg Radiol Anat* 2001;**23**:33–8. Springer-Verlag.
13. el-Galley RE, Keane TE. Embryology, anatomy, and surgical applications of the kidney and ureter. *Surg Clin North Am* 2000;**80**:381–401. United States, xiv.
14. Türkvtan A, Özdemir M, Cumhuri T, Ölçer T. Multidetector CT angiography of renal vasculature: Normal anatomy and variants. *Eur Radiol* 2009;**19**:236–44.
15. Smillie I, Robertson S, Yule A, Dm W, Cj R, Smillie I, et al. Investigation of renal artery variations by multidetector CT angiography. *JAMA Otolaryngol Neck Surg* 2015:141.
16. Urban B a, Ratner LE, Fishman EK. Three-dimensional volume-rendered CT angiography of the renal arteries and veins: normal anatomy, variants, and clinical applications. *Radiographics* 2001;**21**:373–86. questionnaire 549–55.
17. Regina T, Soares S, Ferraz JS, Dartibale CB, Oliveira RM. Acta Scientiarum Variations in human renal arteries. *Acta Sci* 2013: 277–82.
18. Anea CNM, Tanca VDS, Recup DP, Oman IC. Vascular anatomical variants in renal surgery : classic and robotic approach. *Rom J Morphol* 2011;**52**:855–8.
19. Dames EL, Ng LG, Tay KH. Congenital renal arteriovenous malformation presenting with gross hematuria after a routine jog: a case report. *J Med Case Rep J Med Case Rep* 2014;**8**:65.
20. Sequeira Lopez MLS, Gomez RA. Development of the renal Arterioles. *J Am Soc Nephrol* 2011;**22**:2156–65.
21. Mir NS, ul Hassan A, Rangrez R, Hamid S, Sabia Tabish SA. Bilateral duplication of renal vessels: anatomical, medical and surgical perspective. *Int J Health Sci* 2008;**2**:179–85, (Qassim). Qassim University, Kingdom of Saudi Arabia.
22. Varennes L, Tahon F, Kastler A, Grand S, Thony F, Baguet JP, et al. Fibromuscular dysplasia: what the radiologist should know: a pictorial review. *Insights Imaging* 2015;**6**:295–307. Berlin/Heidelberg: Springer Berlin Heidelberg.
23. Chrysant SG, Chrysant GS. Treatment of hypertension in patients with renal artery stenosis due to fibromuscular dysplasia of the renal arteries. *Cardiovasc Diagn Ther China (Republic 1949)* 2014;**4**:36–43.