



## Artery Research

ISSN (Online): 1876-4401

ISSN (Print): 1872-9312

Journal Home Page: <https://www.atlantis-press.com/journals/artres>

---

### The role of “semicarbazide-sensitive amine oxidase” in the arterial wall

N. Mercier

**To cite this article:** N. Mercier (2009) The role of “semicarbazide-sensitive amine oxidase” in the arterial wall, Artery Research 3:4, 141–147, DOI: <https://doi.org/10.1016/j.artres.2009.10.002>

**To link to this article:** <https://doi.org/10.1016/j.artres.2009.10.002>

Published online: 14 December 2019



# The role of “semicarbazide-sensitive amine oxidase” in the arterial wall

N. Mercier <sup>a,b,\*</sup>

<sup>a</sup> INSERM U961, Nancy, France

<sup>b</sup> Henry Poincaré University, France

Available online 8 November 2009

## KEYWORDS

Semicarbazide-sensitive amine oxidase;  
Extracellular matrix;  
Crosslinks;  
Vascular smooth muscle cells;  
Arterial stiffness

**Summary** “Semicarbazide-sensitive amine oxidase” (SSAO) metabolizes primary amines into aldehydes, hydrogen peroxide and ammonia and is largely expressed in adipocytes, lymphatic endothelial cells and vascular smooth muscle cells (VSMCs). *In vitro* SSAO expression and activity increase during VSMC differentiation and SSAO participates in glucose uptake but its exact role in the vascular wall is unclear. Nevertheless, we think that SSAO could modulate VSMC differentiation, as it does in adipocytes. Previous work suggested that SSAO could contribute to vascular remodelling observed in age-related pathologies as plasma levels increase in several cardiovascular diseases and in diabetes. In such cases, SSAO may play a detrimental role by inducing unwanted cross-linking of extracellular matrix proteins and could thus be an interesting target to modulate arterial stiffening. It may also participate in LDL oxidation and inflammation.

A physiological role for SSAO in vascular development and cross-linking of elastin has been proposed, but is not yet established. Our studies on SSAO knockout mice revealed no anomalies in insoluble elastin content, arterial elasticity or vasomotor tone. In growing rats treated with semicarbazide (SCZ), an SSAO inhibitor, or with  $\beta$ -aminopropionitrile (BAPN), a lysyl oxidase (LOX) inhibitor, we confirmed that LOX was the most important enzyme implicated in elastin cross-linking during arterial maturation, but in absence of specific inhibitors, we cannot formally exclude a minor role for SSAO in this process. Specific effects of SSAO inhibition could be an increase in the production of various extracellular matrix proteins, possibly related to the effect of SSAO on VSMC differentiation.

© 2009 Association for Research into Arterial Structure and Physiology. Published by Elsevier B.V. All rights reserved.

Semicarbazide-sensitive amine oxidase (SSAO) was originally characterized by its activity in tissue and plasma and its sensitivity to carbonyl compounds, such as semicarbazide (SCZ). Only ten years ago, SSAO was cloned in

different species and a high inter-species amino acid homology was observed. Cloning has facilitated the exploration of its functions, which nevertheless still remain unclear. In fact, SSAO also exists as a soluble form whose

\* INSERM U961, Faculté de Médecine, 9 avenue de la Forêt de Haye, 54 500 Vandoeuvre-Les-Nancy, France.  
E-mail address: [merciernathalie@hotmail.com](mailto:merciernathalie@hotmail.com)

activity is increased in the serum in patients with diabetes<sup>1–3</sup> and cardiovascular diseases, including congestive heart failure,<sup>4</sup> cerebrovascular diseases<sup>5</sup> and atherosclerosis.<sup>6</sup> SSAO activity also correlates positively with body mass index.<sup>2</sup> Serum levels of SSAO are also increased during inflammation<sup>7</sup> and other diseases (review, ref.<sup>8</sup>).

SSAO, also called vascular adhesion protein 1 (VAP-1), is an ecto-enzyme with a long extracellular domain containing the catalytic site, which requires a topaquinone and one copper atom as cofactors. SSAO metabolizes primary amines into aldehydes, ammonia and hydrogen peroxide. The physiological substrates for SSAO still remain largely unknown. However, SSAO can metabolize methylamine (generated from adrenaline, creatine, creatinine and choline metabolism, food or cigarette smoke) but also aminoacetone (generated from glycine and threonine).<sup>9</sup> The crystal structure of SSAO members clearly indicates that SSAO can also interact with free amino groups in proteins and aminosugars.<sup>10–12</sup>

Tissue and plasma SSAO activity is much higher in humans than in rodents. SSAO expression occurs early in development<sup>13</sup> and continues throughout life in many cell types but mainly in adipocytes, endothelial cells and vascular smooth muscle cells (VSMCs). The origin of soluble SSAO is beginning to be elucidated. SSAO release is increased by TNF $\alpha$  via MMP activity in adipocytes<sup>14</sup> and regulated by  $\beta$ -adrenergic agonists and insulin,<sup>15,16</sup> the latter explaining the plasma SSAO increase in diabetes. Moreover, different transgenic mouse models have shown that adipocytes,<sup>17</sup> but also vascular endothelial cells<sup>17</sup> and VSMCs<sup>18</sup> can be major sources of plasma SSAO.

It was first suspected that SSAO could be a source of toxicity for the arterial wall via aliphatic amine metabolism. For example, allylamine, which can be oxidized by SSAO, was shown to induce necrotic and fibrous lesions in myocardial and vascular tissues, modifications observed in atherosclerosis, via acrolein (generated from allylamine by SSAO) and H<sub>2</sub>O<sub>2</sub> production.<sup>9</sup> Regarding the end products formed by SSAO, aldehydes and hydrogen peroxide can increase protein cross-linkage and oxidative stress, two phenomena involved in aging. It is interesting to note that methylamine or aminoacetone deamination by SSAO generates respectively formaldehyde and methylglyoxal and increases the formation of advanced glycation end products (AGEs).<sup>17,19–21</sup> AGEs can induce an increase in arterial stiffness in diabetes, hypertension and aging.<sup>22,23</sup> The interaction of AGEs with their receptors (RAGE) induces the expression of pro-inflammatory mediators. An important role is attributed to RAGEs in vascular diseases in the literature.<sup>24</sup> Some therapeutic agents are able to inhibit AGE formation, such as aminoguanidine that is also an SSAO inhibitor.<sup>25</sup> It has been shown that diamine oxidase (another topaquinone-containing amine oxidase) can catalyze endothelial cell-mediated LDL oxidation.<sup>26</sup> The increased SSAO activity in plasma during diabetes mellitus could thus accelerate the development of the degenerative complications of this pathology.<sup>9</sup> The combination of both SSAO end products may thus participate in the formation of advanced glycation end products (AGEs) and in LDL (low density lipoprotein) oxidation and be implicated in atherogenesis. Furthermore, endothelial SSAO participates in leukocyte trafficking and transmigration during inflammation and we demonstrated that methylamine-SSAO activation

induces expression of endothelial E and P-selectins, one step of the adhesive cascade, via generation of its end products.<sup>27</sup>

Soluble SSAO incubated with methylamine on rat and human VSMCs induced cell toxicity, mediated by the end products generated. It activated apoptosis in A7r5 cells, as detected by chromatin condensation, Caspase-3 activation, PARP cleavage and cytochrome c release to cytosol due to formaldehyde, rather than H<sub>2</sub>O<sub>2</sub>.<sup>28</sup> Methylamine treatment of a smooth muscle cell line stably transfected with SSAO also induced a dose- and time-dependent cytotoxic effect involving the tumour suppressor protein p53, increased PUMA- $\alpha$  expression with a decrease in mitochondrial Bcl2 family proteins and activation of caspases.<sup>29</sup>

Taken together, all these results suggest that increased soluble and tissue SSAO activity in pathological conditions, could contribute to vascular damage. Thus, it is of potential clinical interest to better understand the role of SSAO in human physiology and physiopathology and to develop specific SSAO antagonists.

Before starting my PhD, SSAO was already known to be involved in amine-stimulated glucose transport in adipocytes,<sup>30</sup> cell adhesion, lymphocyte trafficking and granulocyte extravasation in endothelial cells from lymphatic vessels.<sup>27</sup> Our work has been mainly aimed at investigating a possible physiological role of SSAO during vascular growth and maturation.

## Personal contributions

### SSAO, cell differentiation and glucose transport *in vitro*

In our laboratory, SSAO was cloned in a mouse adipose cell line where its expression is induced during adipose maturation.<sup>31</sup> H<sub>2</sub>O<sub>2</sub>, known as an insulin-mimicking molecule in adipocytes, was largely responsible for the SSAO-promoting effect on adipose cell differentiation.<sup>32</sup> Moreover, SSAO expression was shown to be down-regulated by TNF $\alpha$ ,<sup>31,32</sup> and AMPc<sup>31</sup> in adipocytes. Others found that endothelial SSAO could be up-regulated by TNF $\alpha$  but also by other inflammatory cytokines (IL-1, IL4, Interferon  $\gamma$ ), and LPS.<sup>33</sup>

In parallel, we were also interested in SSAO functions in the arterial wall. In physiological conditions, SSAO is largely expressed in the media from large vessels *in vivo*, which contains mainly SMCs.<sup>34,35</sup> It was also shown that both VSMCs and non-vascular SMCs in culture expressed SSAO.<sup>36,37</sup> We have shown that re-differentiation of cultured VSMCs in a serum-free medium supplemented with growth factors induced expression and activity of SSAO, in parallel with other differentiation markers.<sup>38</sup> It is possible that glucose and H<sub>2</sub>O<sub>2</sub> may act as a signal modulating the expression of genes coding for differentiation markers and ECM proteins. Even though SSAO activation promotes adipose cell differentiation through H<sub>2</sub>O<sub>2</sub>,<sup>32</sup> no direct argument has yet shown the implication of SSAO in VSMC maturation. Nevertheless, in some forms of aneurysm, the expression of SSAO and smooth muscle myosin heavy chain (a marker of VSMC differentiation) are both markedly decreased at the aneurysmal site where elastic fibres are disorganised.<sup>39</sup> In contrast, SSAO is expressed along the elastic lamellae in the non-affected zone.<sup>40</sup> This is in

**Table 1** Comparison of the different animal and cell models used to elucidate the role of SSAO in the arterial wall.

Genetically modified mice	Pharmacological SSAO inhibition in growing rats	Cell models
<ul style="list-style-type: none"> <li>• SSAO KO mice versus WT mice<sup>50</sup> <ul style="list-style-type: none"> <li>- MAP and Pulse pressure: normal</li> <li>- Arterial stiffness: normal</li> <li>- Mechanical resistance: normal</li> <li>- LOX activity: normal</li> <li>- Elastic fibre morphology: normal</li> <li>- Elastin and collagen content: normal</li> <li>- Vascular reactivity: normal</li> </ul> </li> <li>• VSMCs over-expressing hSSAO versus WT mice<sup>18,57</sup> <ul style="list-style-type: none"> <li>- MAP ↓ and pulse pressure ↑</li> <li>- Abnormal structure of elastic fibres</li> <li>- Problem of blood pressure regulation</li> </ul> </li> </ul> <p>Mice over-expressing hSSAO in endothelial cells<sup>17</sup></p> <p>The hVAP-1 transgene together with increased SSAO substrate availability:</p> <ul style="list-style-type: none"> <li>- ↑ glucose uptake,</li> <li>- Diabetes-like complications (AGE product formation, elevated blood pressure, altered atherosclerosis progression, and nephropathy)</li> </ul>	<ul style="list-style-type: none"> <li>• Mercier et al.<sup>47,55</sup> <ul style="list-style-type: none"> <li>- MAP normal and pulse pressure ↑</li> <li>- Arterial stiffness: ↑</li> <li>- Mechanical resistance: ↓</li> <li>- LOX activity ↓</li> <li>- Alterations of elastic lamellae</li> <li>- ECM protein ↑</li> </ul> </li> <li>• Langford et al.<sup>45</sup> <ul style="list-style-type: none"> <li>- Disorganization of elastin architecture</li> <li>- Degenerative medial changes</li> <li>- Mature elastin and collagen ↓</li> <li>- Total elastin and collagen =</li> <li>- LOX activity =</li> <li>- Cross-sectional diameter of aorta ↑</li> </ul> </li> </ul>	<p>VSMC differentiation<sup>38</sup></p> <ul style="list-style-type: none"> <li>- SSAO expression and activity ↑ during VSMC differentiation</li> <li>- Methylamine ↑ Glut1 expression at the plasma membrane</li> </ul> <p>SMCs from neonatal rat<sup>46</sup></p> <ul style="list-style-type: none"> <li>- SSAO and ECM production increase in parallel</li> <li>- SSAO inhibition induces aberrations in collagen and elastin deposits</li> </ul> <p>Effect of soluble SSAO on VSMCs<sup>28</sup></p> <p>SSAO end products induce apoptosis:</p> <ul style="list-style-type: none"> <li>- Caspase-3 activation</li> <li>- PARP cleavage</li> <li>- Cytochrome C release</li> </ul> <ul style="list-style-type: none"> <li>• VSMCs surexpressing hSSAO<sup>29,58</sup> <ul style="list-style-type: none"> <li>- Methylamine induces <ul style="list-style-type: none"> <li>- Cytotoxic effects on VSMCs</li> <li>- P53 phosphorylation</li> <li>- PMA α expression ↑</li> <li>- Bcl2 ↓</li> <li>- Caspase stimulation</li> </ul> </li> </ul> </li> </ul>

accord with our *in vitro* results. The vascular system, adipose tissue, and smooth muscle cells express SSAO early during embryonic development suggesting that SSAO could be involved in the differentiation process (as in tissue vascularisation) during this period.<sup>13</sup>

We have also shown *in vitro* that H<sub>2</sub>O<sub>2</sub>, generated via methylamine oxidation by SSAO, increases glucose transport and membrane accumulation of GLUT1.<sup>38</sup> An association between a GLUT mutation and aneurysm formation has recently been shown that might be explained by an overproduction of TGFβ and VSMC dedifferentiation.<sup>41,42</sup> Thus these results reinforce the idea that SSAO could be implicated in VSMC differentiation. In an *in vivo* rat model of cerebral aneurysms, it has recently been shown that a decrease in SSAO activity and expression, associated with SMC dedifferentiation, is strongly and independently correlated with elastic laminar thinning during the development of intracranial aneurysms.<sup>39</sup> The authors suggested that VSMC dedifferentiation induced by hemodynamic stress could impair elastic lamellar organization through a decrease in elastin content and a possible SSAO-related elastin cross-link deficiency.

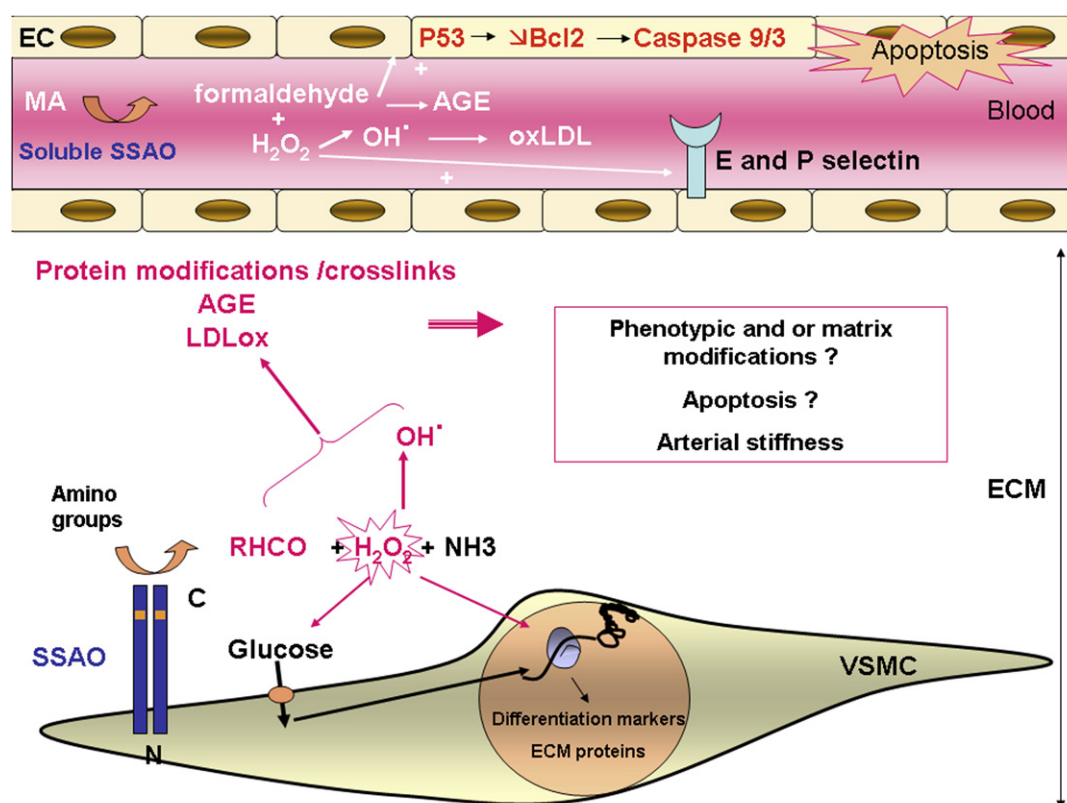
### Possible role of SSAO in organization and maturation of arterial ECM

The maturation and structure of elastic fibres and collagen depends on the formation of intra- and intermolecular crosslinks, a physiological process which occurs in

development and growth. This process strongly influences elasticity and resistance of large arteries. Lysyl oxidase (LOX), an enzyme belonging to the same family as SSAO, is the major enzyme involved in this pathway (review, ref.<sup>43</sup>). Inactivation of the LOX gene leads to perinatal death and to aortic aneurysm formation.<sup>44</sup> Langford et al.<sup>45</sup> have suggested that SSAO could play an important role in arterial wall organization as they showed that chronic inhibition of SSAO in young rats was associated with aortic damage and dilatation, with elastic lamellar disorganization. *In vitro* experiments confirmed that SSAO inhibition produced aberrations in collagen and elastin deposition by heart SMCs.<sup>46</sup> Furthermore, Gokturk et al.<sup>18</sup> have developed a transgenic murine model over-expressing human VAP-1 in VSMCs. These mice presented an elevated pulse pressure, together with an abnormal elastic lamellar structure in the aorta, suggesting increased rigidity of large arteries as a result of an elevated SSAO activity, as well as a possible physiologic role for SSAO in elastic fibre maturation. In addition, as mentioned above, a strong decrease in SSAO was observed in aortic and cerebral aneurysms and a co-localization was found between SSAO and elastic fibres in the peripheral unaffected zones.<sup>39</sup> All these results provide arguments to support a role for SSAO in the synthesis, maturation and/or organization of ECM proteins, and elastin in particular.

**An *in vivo* rat model of pharmacological SSAO inhibition**

Based on these observations, we examined the consequences of chronic inhibition of SSAO by SCZ during the



**Figure 1** Summary of possible roles of SSAO in the vascular wall. SSAO is expressed at the plasma membrane of differentiated VSMCs with its active site located in the extracellular space, where it transforms amino groups from primary amines or within proteins into aldehydes (RHCN), hydrogen peroxide ( $H_2O_2$ ) and ammonia ( $NH_3$ ). SSAO activates amine-stimulated glucose transport partly through  $H_2O_2$ . Glucose and  $H_2O_2$  may act as a signal modulating the expression of genes coding for differentiation markers and ECM proteins.  $H_2O_2$  is a source of hydroxyl radicals that can combine with aldehydes and participate in protein modifications, in the formation of crosslinks and advanced glycated end products (AGE) and in oxidation of low density lipoproteins (ox LDL). These events could lead to modification of VSMC phenotype, organization of ECM, apoptosis and/or arterial stiffness. SSAO has also been shown to be expressed by endothelial cells (EC) during inflammation and can up-regulate E and P selectin expression. SSAO is also present in the serum where the end products generated from methylamine (MA) could also participate in LDL oxidation, AGE formation and apoptosis induction via activation of P53 and a decrease in Bcl2 leading to activation of caspase 9 and 3. Thus, SSAO might play a role in vascular wall physiopathology, especially in atherosclerosis.

period of rapid growth in the Sprague Dawley rat on the functional, histological and biochemical properties of large arteries.<sup>47</sup> *In vivo*, distensibility was not modified whereas the Einc/wall stress curves showed an increased arterial stiffness in response to SCZ. *In vitro* experiments revealed a significantly decreased rupture pressure in carotid arteries from SCZ-treated rats compared to controls. This result indicated that arterial fragility is induced by SCZ, which was accompanied by a diminution in insoluble, crosslinked elastin and alterations of elastic lamellae. Elastic lamellar structure was modified by the presence of peripheral deposits of dense globular masses, supposed to be composed of non-crosslinked elastin and proteoglycans. Because these effects were similar to those observed after pharmacological inhibition of LOX by BAPN,<sup>48,49</sup> we measured LOX activity in SCZ-treated rats. In contrast to the results of Langford et al.,<sup>45</sup> we found a significant (40%) inhibition of LOX activity induced by SCZ. Thus, it was not possible to know whether the effects induced by SCZ were due to SSAO or to LOX inhibition. In SCZ-treated rats, the medial thickness was also increased in association with an

increased weight of extracellular proteins other than insoluble elastin and collagen.

#### An SSAO knockout mice model

In order to avoid the confounding effects of SCZ-induced LOX inhibition, we examined the vascular phenotype of SSAO deficient mice.<sup>50</sup> *In vivo*, SSAO knockout mice presented a decrease in carotid distensibility in association with an increase in carotid diameter compared to WT mice. In SSAO knockout mice, arterial morphology was normal, there was no reduction in crosslinked elastin or in total collagen, muscular tone was not modified and elastic modulus was unchanged. These results could not be explained by a compensatory increased in LOX activity in the KO mice. We thus could not confirm the hypothesis of a role for SSAO in cross-link formation, at least during development and growth in the mouse.

It has been proposed that  $H_2O_2$  generated by SSAO could increase vascular tone and that inhibition of SSAO could participate in vasodilatory effects induced by hydralazine in the rat.<sup>51–53</sup> But these results diverge from those



obtained by Coklin et al.<sup>54</sup> on human left internal mammary artery segments, where methylamine induced vasodilatation via formaldehyde and H<sub>2</sub>O<sub>2</sub> production. However, in our SSAO knockout mouse model, the pharmacological profile of isolated mesenteric and carotid arteries was not modified compared to wild type mice, implying no major VSMC or endothelial dysfunction in the absence of SSAO, at least in mice.<sup>50</sup>

### Comparison of the roles of LOX and SSAO in arterial extracellular matrix

To attempt to discriminate between SCZ effects on the ECM that were due to LOX inhibition from those due to SSAO inhibition, we used high and low equimolar doses of BAPN (a specific LOX inhibitor) and SCZ to treat Brown-Norway (BN) rats during the rapid growth period.<sup>55</sup> The BN rat presents a rare arterial phenotype implicating the elastic fibre network (Large numbers of defects in the internal elastic Lamellae (IEL), a deficit in aortic insoluble elastin and a lower LOX activity compared to other strains). This strain was chosen, rather than the previously used Sprague Dawley, because IEL rupture is particularly sensitive to compounds affecting elastin and collagen cross-linking and is precisely quantifiable.<sup>48,56</sup> The BN is thus a good model in which to carry out such a study. Our results showed that SCZ was as efficient as BAPN in inhibiting LOX activity but SCZ inhibited SSAO activity in aorta far more than BAPN. Both inhibitors decreased arterial rupture pressure and insoluble elastin content and increased collagen solubility and IEL rupture, but SCZ was more potent. Thus either these effects are all mediated by LOX, SCZ being a more effective LOX inhibitor than BAPN in our conditions, or SSAO acts similarly to and in synergy with LOX on the extracellular matrix, but playing a minor role. We must await the availability of more specific inhibitors to definitely settle the question. However, aortic weight was increased only by the high dose of SCZ, mainly due to increased ECM proteins other than insoluble elastin, and to a lesser extent by increased collagen, suggesting that this may be a specific effect of SSAO inhibition. This may be linked to a role for SSAO in VSMC differentiation.

The main animal and cell models that may help to understand the role of SSAO in the arterial wall are summarized in Table 1 and the various mechanisms proposed are schematized in Fig. 1.

### Conclusion

Previous work has provided several lines of evidence that SSAO could contribute to vascular remodelling observed in age-related pathologies (especially cardiovascular diseases and diabetes) by inducing unwanted cross-linking of extracellular matrix proteins and participating in LDL oxidation and inflammation. SSAO could thus be an interesting therapeutic target to modulate, in particular for arterial stiffening. As for its physiological role in vascular growth and maturation, we conclude that SSAO does not play a major role in cross-link formation of elastin or collagen in contrast to LOX, although it might provide a minor, accessory contribution. It appears probable that SSAO is involved in glucose transport and it may participate

in VSMC differentiation, as it does in adipocytes, in which case it may modulate ECM protein production by VSMCs. It is clear that further studies are required to elucidate the exact role in vascular physiology of this enzyme which is highly expressed by VSMCs.

### References

- Boomsma F, Derckx FH, van den Meiracker AH, Man in 't Veld AJ, Schalekamp MA. Plasma semicarbazide-sensitive amine oxidase activity is elevated in diabetes mellitus and correlates with glycosylated haemoglobin. *Clin Sci (Lond)* 1995;**88**(6):675–9.
- Garpenstrand H, Ekblom J, Backlund LB, Orelund L, Rosenqvist U. Elevated plasma semicarbazide-sensitive amine oxidase (SSAO) activity in type 2 diabetes mellitus complicated by retinopathy. *Diabet Med* 1999;**16**(6):514–21.
- Meszáros Z, Szombathy T, Raimondi L, Karadi I, Romics L, Magyar K. Elevated serum semicarbazide-sensitive amine oxidase activity in non-insulin-dependent diabetes mellitus: correlation with body mass index and serum triglyceride. *Metabolism* 1999;**48**(1):113–7.
- Boomsma F, van Veldhuisen DJ, de Kam PJ, Man in't Veld AJ, Mosterd A, Lie KI, et al. Plasma semicarbazide-sensitive amine oxidase is elevated in patients with congestive heart failure. *Cardiovasc Res* 1997;**33**(2):387–91.
- Ishizaki F. Plasma benzylamine oxidase activity in cerebrovascular disease. *Eur Neurol* 1990;**30**(2):104–7.
- Boomsma F, Hut H, Bagghoe U, van der Houwen A, van den Meiracker A. Semicarbazide-sensitive amine oxidase (SSAO): from cell to circulation. *Med Sci Monit* 2005;**11**(4):RA122–6.
- Kurkijarvi R, Adams DH, Leino R, Mottonen T, Jalkanen S, Salmi M. Circulating form of human vascular adhesion protein-1 (VAP-1): increased serum levels in inflammatory liver diseases. *J Immunol* 1998;**161**(3):1549–57.
- Boomsma F, Bhaggoe UM, van der Houwen AM, van den Meiracker AH. Plasma semicarbazide-sensitive amine oxidase in human (patho)physiology. *Biochim Biophys Acta* 2003;**1647**(1–2):48–54.
- Yu PH, Wright S, Fan EH, Lun ZR, Gubisne-Harberle D. Physiological and pathological implications of semicarbazide-sensitive amine oxidase. *Biochim Biophys Acta* 2003;**1647**(1–2):193–9.
- O'Sullivan J, O'Sullivan M, Tipton KF, Unzeta M, Del Mar Hernandez M, Davey GP. The inhibition of semicarbazide-sensitive amine oxidase by aminohexoses. *Biochim Biophys Acta* 2003;**1647**(1–2):367–71.
- Salmi M, Yegutkin GG, Lehtonen R, Koskinen K, Salminen T, Jalkanen S. A cell surface amine oxidase directly controls lymphocyte migration. *Immunity* 2001;**14**(3):265–76.
- Yegutkin GG, Salminen T, Koskinen K, Kurtis C, McPherson MJ, Jalkanen S, et al. A peptide inhibitor of vascular adhesion protein-1 (VAP-1) blocks leukocyte–endothelium interactions under shear stress. *Eur J Immunol* 2004;**34**(8):2276–85.
- Valente T, Sole M, Unzeta M. SSAO/VAP-1 protein expression during mouse embryonic development. *Dev Dyn* 2008;**237**(9):2585–93.
- Abella A, Garcia-Vicente S, Viguerie N, Ros-Baro A, Camps M, Palacin M, et al. Adipocytes release a soluble form of VAP-1/SSAO by a metalloprotease-dependent process and in a regulated manner. *Diabetologia* 2004;**47**(3):429–38.
- Garcia-Vicente S, Abella A, Viguerie N, Ros-Baro A, Camps M, Testar X, et al. The release of soluble VAP-1/SSAO by 3T3-L1 adipocytes is stimulated by isoproterenol and low concentrations of TNF $\alpha$ . *J Physiol Biochem* 2005;**61**(2):395–401.
- Salmi M, Stolen C, Jousilahti P, Yegutkin GG, Tapanainen P, Janatuinen T, et al. Insulin-regulated increase of soluble

- vascular adhesion protein-1 in diabetes. *Am J Pathol* 2002; **161**(6):2255–62.
17. Stolen CM, Madanat R, Marti L, Kari S, Yegutkin GG, Sariola H, et al. Semicarbazide sensitive amine oxidase overexpression has dual consequences: insulin mimicry and diabetes-like complications. *FASEB J* 2004; **18**(6):702–4.
  18. Gokturk C, Sugimoto H, Blomgren B, Roomans GM, Forsberg-Nilsson K, Orelund L, et al. Macrovascular changes in mice overexpressing human semicarbazide-sensitive amine oxidase in smooth muscle cells. *Am J Hypertens* 2007; **20**(7):743–50.
  19. Gubins-Haberle D, Hill W, Kazachkov M, Richardson JS, Yu PH. Protein cross-linkage induced by formaldehyde derived from semicarbazide-sensitive amine oxidase-mediated deamination of methylamine. *J Pharmacol Exp Ther* 2004; **310**(3):1125–32.
  20. Mathys KC, Ponnampalam SN, Padival S, Nagaraj RH. Semicarbazide-sensitive amine oxidase in aortic smooth muscle cells mediates synthesis of a methylglyoxal-AGE: implications for vascular complications in diabetes. *Biochem Biophys Res Commun* 2002; **297**(4):863–9.
  21. Yu PH, Lai CT, Zuo DM. Formation of formaldehyde from adrenaline in vivo; a potential risk factor for stress-related angiopathy. *Neurochem Res* 1997; **22**(5):615–20.
  22. Cantini C, Kieffer P, Corman B, Liminana P, Atkinson J, Larraud-Idjouadiene I. Aminoguanidine and aortic wall mechanics, structure, and composition in aged rats. *Hypertension* 2001; **38**(4):943–8.
  23. Corman B, Duriez M, Poitevin P, Heudes D, Bruneval P, Tedgui A, et al. Aminoguanidine prevents age-related arterial stiffening and cardiac hypertrophy. *Proc Natl Acad Sci U S A* 1998; **95**(3):1301–6.
  24. Koyama H, Yamamoto H, Nishizawa Y. RAGE and soluble RAGE: potential therapeutic targets for cardiovascular diseases. *Mol Med* 2007; **13**(11–12):625–35.
  25. Yu PH, Zuo DM. Aminoguanidine inhibits semicarbazide-sensitive amine oxidase activity: implications for advanced glycation and diabetic complications. *Diabetologia* 1997; **40**(11):1243–50.
  26. Exner M, Hermann M, Hofbauer R, Kapiotis S, Quehenberger P, Speiser W, et al. Semicarbazide-sensitive amine oxidase catalyzes endothelial cell-mediated low density lipoprotein oxidation. *Cardiovasc Res* 2001; **50**(3):583–8.
  27. Jalkanen S, Salmi M. VAP-1 and CD73, endothelial cell surface enzymes in leukocyte extravasation. *Arterioscler Thromb Vasc Biol* 2008; **28**(1):18–26.
  28. Hernandez M, Sole M, Boada M, Unzeta M. Soluble semicarbazide sensitive amine oxidase (SSAO) catalysis induces apoptosis in vascular smooth muscle cells. *Biochim Biophys Acta* 2006; **1763**(2):164–73.
  29. Sole M, Hernandez-Guillamon M, Boada M, Unzeta M. p53 Phosphorylation is involved in vascular cell death induced by the catalytic activity of membrane-bound SSAO/VAP-1. *Biochim Biophys Acta* 2008; **1783**(6):1085–94.
  30. Zorzano A, Abella A, Marti L, Carpena C, Palacin M, Testar X. Semicarbazide-sensitive amine oxidase activity exerts insulin-like effects on glucose metabolism and insulin-signaling pathways in adipose cells. *Biochim Biophys Acta* 2003; **1647**(1–2):3–9.
  31. Moldes M, Feve B, Pairault J. Molecular cloning of a major mRNA species in murine 3T3 adipocyte lineage. differentiation-dependent expression, regulation, and identification as semicarbazide-sensitive amine oxidase. *J Biol Chem* 1999; **274**(14):9515–23.
  32. Mercier N, Moldes M, El Hadri K, Feve B. Semicarbazide-sensitive amine oxidase activation promotes adipose conversion of 3T3-L1 cells. *Biochem J* 2001; **358**(Pt 2):335–42.
  33. Arvilommi AM, Salmi M, Jalkanen S. Organ-selective regulation of vascular adhesion protein-1 expression in man. *Eur J Immunol* 1997; **27**(7):1794–800.
  34. Jaakkola K, Kaunismaki K, Tohka S, Yegutkin G, Vanttinen E, Havia T, et al. Human vascular adhesion protein-1 in smooth muscle cells. *Am J Pathol* 1999; **155**(6):1953–65.
  35. Lyles GA, Singh I. Vascular smooth muscle cells: a major source of the semicarbazide-sensitive amine oxidase of the rat aorta. *J Pharm Pharmacol* 1985; **37**(9):637–43.
  36. Lyles GA. Mammalian plasma and tissue-bound semicarbazide-sensitive amine oxidases: biochemical, pharmacological and toxicological aspects. *Int J Biochem Cell Biol* 1996; **28**(3):259–74.
  37. Lyles GA, Pino R. Properties and functions of tissue-bound semicarbazide-sensitive amine oxidases in isolated cell preparations and cell cultures. *J Neural Transm Suppl* 1998; **52**:239–50.
  38. El Hadri K, Moldes M, Mercier N, Andreani M, Pairault J, Feve B. Semicarbazide-sensitive amine oxidase in vascular smooth muscle cells: differentiation-dependent expression and role in glucose uptake. *Arterioscler Thromb Vasc Biol* 2002; **22**(1):89–94.
  39. Sibon I, Mercier N, Darret D, Lacolley P, Lamaziere JM. Association between semicarbazide-sensitive amine oxidase, a regulator of the glucose transporter, and elastic lamellae thinning during experimental cerebral aneurysm development: laboratory investigation. *J Neurosurg* 2008; **108**(3):558–66.
  40. Sibon I, Larrieu D, El Hadri K, Mercier N, Feve B, Lacolley P, et al. Semicarbazide-sensitive amine oxidase in annulo-aortic ectasia disease: relation to elastic lamellae-associated proteins. *J Histochem Cytochem* 2004; **52**(11):1459–66.
  41. Coucke PJ, Willaert A, Wessels MW, Callewaert B, Zoppi N, De Backer J, et al. Mutations in the facilitative glucose transporter GLUT10 alter angiogenesis and cause arterial tortuosity syndrome. *Nat Genet* 2006; **38**(4):452–7.
  42. Habashi JP, Judge DP, Holm TM, Cohn RD, Loeys BL, Cooper TK, et al. Losartan, an AT1 antagonist, prevents aortic aneurysm in a mouse model of Marfan syndrome. *Science* 2006; **312**(5770):117–21.
  43. Smith-Mungo LI, Kagan HM. Lysyl oxidase: properties, regulation and multiple functions in biology. *Matrix Biol* 1998; **16**(7):387–98.
  44. Maki JM, Rasanen J, Tikkanen H, Sormunen R, Makikallio K, Kivirikko KI, et al. Inactivation of the lysyl oxidase gene *Lox* leads to aortic aneurysms, cardiovascular dysfunction, and perinatal death in mice. *Circulation* 2002; **106**(19):2503–9.
  45. Langford SD, Trent MB, Balakumaran A, Boor PJ. Developmental vasculotoxicity associated with inhibition of semicarbazide-sensitive amine oxidase. *Toxicol Appl Pharmacol* 1999; **155**(3):237–44.
  46. Langford SD, Trent MB, Boor PJ. Semicarbazide-sensitive amine oxidase and extracellular matrix deposition by smooth-muscle cells. *Cardiovasc Toxicol* 2002; **2**(2):141–50.
  47. Mercier N, El Hadri K, Osborne-Pellegrin M, Nehme J, Perret C, Labat C, et al. Modifications of arterial phenotype in response to amine oxidase inhibition by semicarbazide. *Hypertension* 2007; **50**(1):234–41.
  48. Capdeville M, Coutard M, Osborne-Pellegrin MJ. Spontaneous rupture of the internal elastic lamina in the rat: the manifestation of a genetically determined factor which may be linked to vascular fragility. *Blood Vessels* 1989; **26**(4):197–212.
  49. Fornieri C, Baccarani-Contri M, Quaglini Jr D, Pasquali-Ronchetti I. Lysyl oxidase activity and elastin/glycosaminoglycan interactions in growing chick and rat aortas. *J Cell Biol* 1987; **105**(3):1463–9.
  50. Mercier N, Osborne-Pellegrin M, El Hadri K, Kakou A, Labat C, Loufrani L, et al. Carotid arterial stiffness, elastic fibre network and vasoreactivity in semicarbazide-sensitive amine-oxidase null mouse. *Cardiovasc Res* 2006; **72**(2):349–57.
  51. Vidrio H. Semicarbazide-sensitive amine oxidase: role in the vasculature and vasodilation after in situ inhibition. *Auton Autacoid Pharmacol* 2003; **23**(5–6):275–83.

52. Vidrio H, Medina M. Hypotensive effect of hydroxylamine, an endogenous nitric oxide donor and SSAO inhibitor. *J Neural Transm* 2007;**114**(6):863–5.
53. Vidrio H, Medina M, Gonzalez-Romo P, Lorenzana-Jimenez M, Diaz-Arista P, Baeza A. Semicarbazide-sensitive amine oxidase substrates potentiate hydralazine hypotension: possible role of hydrogen peroxide. *J Pharmacol Exp Ther* 2003;**307**(2):497–504.
54. Conklin DJ, Cowley HR, Wiechmann RJ, Johnson GH, Trent MB, Boor PJ. Vasoactive effects of methylamine in isolated human blood vessels: role of semicarbazide-sensitive amine oxidase, formaldehyde, and hydrogen peroxide. *Am J Physiol Heart Circ Physiol* 2004;**286**(2):H667–76.
55. Mercier N, Kakou A, Challande P, Lacolley P, Osborne-Pellegrin M. Comparison of the effects of semicarbazide and beta-aminopropionitrile on the arterial extracellular matrix in the Brown Norway rat. *Toxicol Appl Pharmacol* 2009;**239**(3): 258–67.
56. Huang W, Alhenc Gelas F, Osborne-Pellegrin MJ. Protection of the arterial internal elastic lamina by inhibition of the renin-angiotensin system in the rat. *Circ Res* 1998;**82**(8): 879–90.
57. Gokturk C, Nilsson J, Nordquist J, Kristensson M, Svensson K, Soderberg C, et al. Overexpression of semicarbazide-sensitive amine oxidase in smooth muscle cells leads to an abnormal structure of the aortic elastic laminae. *Am J Pathol* 2003; **163**(5):1921–8.
58. Sole M, Hernandez M, Boada M, Unzeta M. Characterization of A7r5 cell line transfected in a stable form by hSSAO/VAP-1 gene (A7r5 hSSAO/VAP-1 cell line). *J Neural Transm* 2007; **114**(6):763–7.