



Artery Research

ISSN (Online): 1876-4401

ISSN (Print): 1872-9312

Journal Home Page: <https://www.atlantis-press.com/journals/artres>

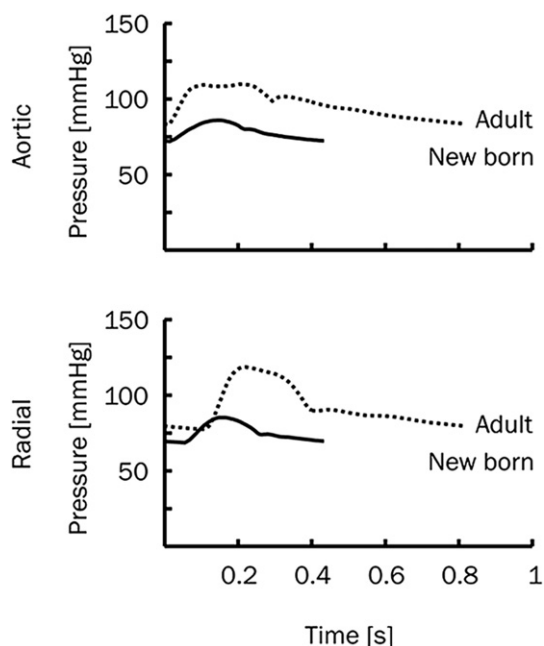
P5.08: NORMALISATION FOR WALL SHEAR STRESS STIMULUS IMPROVES ACCURACY IN THE ASSESSMENT OF GLUCOSE-INDUCED CHANGES IN FLOW-MEDIATED DILATION

F.C.G. van Bussel, B.C.T. van Bussel, M.T.J. van Bussel, J. Op't Roodt, A.P.G. Hoeks, C.G. Schalkwijk, K.D. Reesink

To cite this article: F.C.G. van Bussel, B.C.T. van Bussel, M.T.J. van Bussel, J. Op't Roodt, A.P.G. Hoeks, C.G. Schalkwijk, K.D. Reesink (2011) P5.08: NORMALISATION FOR WALL SHEAR STRESS STIMULUS IMPROVES ACCURACY IN THE ASSESSMENT OF GLUCOSE-INDUCED CHANGES IN FLOW-MEDIATED DILATION, Artery Research 5:4, 165–166, DOI: <https://doi.org/10.1016/j.artres.2011.10.065>

To link to this article: <https://doi.org/10.1016/j.artres.2011.10.065>

Published online: 14 December 2019



P5.07

ASSOCIATION OF WAVE REFLECTIONS AND AORTIC STIFFNESS WITH UTERINE ARTERY DOPPLER PULSATILITY INDEX AND RISK OF PREECLAMPSIA

T. R. Everett¹, A. Mahendru¹, C. M. McEnery², C. C. Lees¹, I. B. Wilkinson²

¹Dept of Fetal Medicine, Box 228, Addenbrooke's Hospital Cambridge University Hospitals NHS Trust., Cambridge, United Kingdom

²Clinical Pharmacology Unit, University of Cambridge, Addenbrooke's Hospital, Cambridge, United Kingdom

Objectives: Arterial stiffness is increased in women with preeclampsia. Assessment of spiral artery transformation and successful placentation by uterine artery Doppler pulsatility index (UtAD PI) is a widely used screening tool for early-onset preeclampsia. We sought to determine whether there was a relationship between uterine artery Doppler impedance and aortic stiffness and arterial wave reflection.

Methods: 92 women were recruited from the high risk obstetric clinic in the second trimester. Median age: 32.8years (Range 19-45years), median gestation: 23⁺⁶weeks (Range: 19⁺⁶-26⁺¹weeks). Smokers were excluded. Transabdominal uterine artery Doppler measurements were performed bilaterally using Siemens Acuson S2000 ultrasound machine and mean pulsatility index calculated. cfPWV and pulse wave analysis were performed using Vicorder and SphygmoCor respectively. Prior to cardiovascular measurements, women were rested supine for 10 minutes in 30° left lateral position. Three consistent readings were performed and a mean value calculated. cfPWV was adjusted for mean arterial pressure and augmentation index (AIx) adjusted for heart rate and height using SPSS v18.0.

Results: There was a significant positive association between uterine artery Doppler pulsatility index and increasing cfPWV ($r=0.23$, $P=0.03$) (Fig.1) and AIx ($r=0.36$, $P=0.0005$) (Fig.2).

Conclusions: Increasing UtAD PI reflects impaired placentation and increasing risk of preeclampsia. We show that women at increasing risk of preeclampsia have higher aortic stiffness and arterial wave reflection, even in the absence of preeclampsia. Further studies are required to determine whether this is a reflection of abnormal pregnancy on arterial stiffness, or whether the increased arterial stiffness precedes pregnancy.

Association of carotid-femoral PWV and uterine artery Doppler PI in the late second trimester

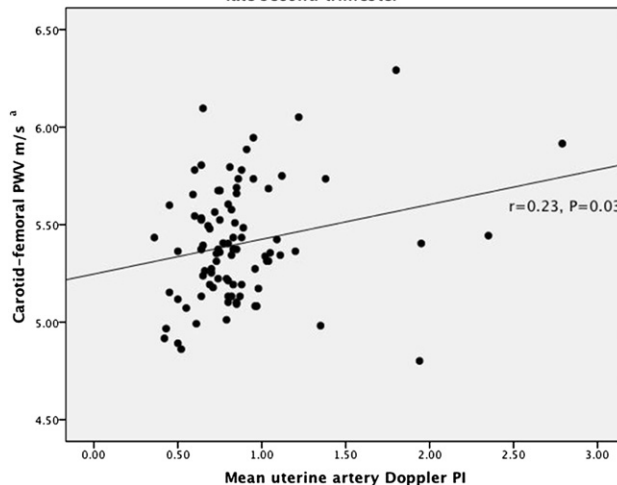


Figure 1

adjusted for mean arterial pressure

Association of augmentation index and uterine artery Doppler PI in the late second trimester

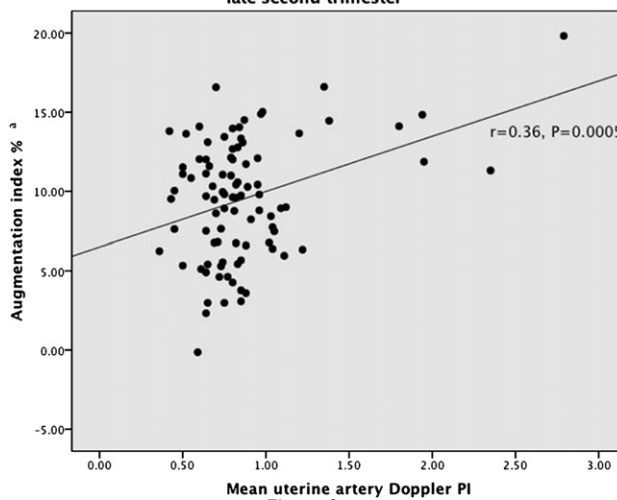


Figure 2

adjusted for height and heart rate

P5.08

NORMALISATION FOR WALL SHEAR STRESS STIMULUS IMPROVES ACCURACY IN THE ASSESSMENT OF GLUCOSE-INDUCED CHANGES IN FLOW-MEDIATED DILATION

F. C. G. van Bussel, B. C. T. van Bussel, M. T. J. van Bussel, J. Op't Roodt, A. P. G. Hoeks, C. G. Schalkwijk, K. D. Reesink
Maastricht University Medical Centre, Maastricht, Netherlands

Background: In healthy arteries, acute changes in wall shear stress (WSS) elicit a vessel dilation response, through endothelial NO-release and smooth muscle relaxation (flow-mediated dilation, FMD). Metabolic or pharmacologic agents might modulate FMD, but may also interfere with the transient WSS stimulus utilised to assess FMD. We hypothesized that glucose-induced changes in FMD can be detected with greater sensitivity by normalising FMD for the WSS stimulus.

Methods & Results: Twenty-two healthy volunteers (24 ± 6 yrs, BMI 24 ± 7 kg/m²) underwent a standard oral glucose tolerance test during which brachial FMD was assessed by simultaneous B-mode/PW-Doppler ultrasound at baseline

(twice), at 30 and at 75min post glucose intake. FMD was defined as the peak increase in diameter relative to baseline diameter ($\Delta D_{\text{peak}}/D_{\text{baseline}}$) and as the response/stimulus ratio: $\text{nFMD} = \text{FMD}/(\Delta \text{WSS}_{\text{mean}}/\text{WSS}_{\text{baseline}})$. Subjects underwent this protocol twice, resulting in four baseline FMD measurements to estimate intra-class correlation coefficients, which were 0.57 and 0.63 for nFMD and FMD, respectively.

Effect of the oral glucose tolerance test: Comparison between nFMD and FMD

	baseline	30min	75min	p-value*
glucose [mmol/l]	4.7 ± 0.3	6.6 ± 1.0	5.9 ± 1.3	<0.001
nFMD [a.u.]	0.072 ± 0.056	0.029 ± 0.019	0.037 ± 0.035	0.001
FMD [%]	6.3 ± 2.7	5.1 ± 3.0	5.9 ± 3.4	0.068

*repeated ANOVA, n=22.

Conclusions: With nFMD, glucose induced changes in flow mediated dilation are better discriminated than by $\Delta D_{\text{peak}}/D_{\text{baseline}}$. These findings demonstrate the merit of stimulus normalisation in vascular intervention studies.

P5.09

AORTIC/PENILE INDEX IS A MARKER OF OCCULT CORONARY ARTERY DISEASE IN MIDDLE-AGED HYPERTENSIVE PATIENTS WITH ERECTILE DYSFUNCTION

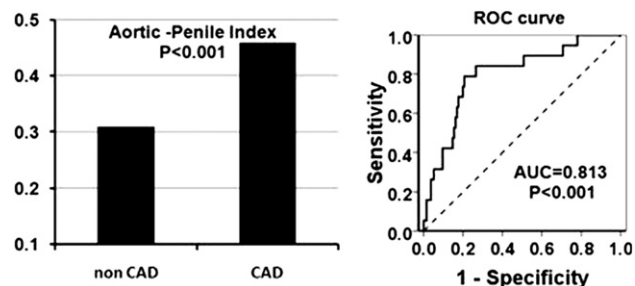
N. Ioakeimidis, C. Vlachopoulos, D. Terentes-Printzios, P. Xaplanteris, E. Christoforatos, P. Pietri, D. Kardara, A. Synodinos, K. Aznaouridis, C. Stefanadis

1st Department of Cardiology, Athens, Greece

Background: It has been reported that there is a strict correlation between hypertension, erectile dysfunction (ED) and coronary artery disease (CAD), but the importance of an index to predict CAD in hypertensive ED patients needs to be addressed.

Methods: 155 consecutive asymptomatic non-diabetic treated hypertensive ED patients (40-60 y/o) were evaluated using exercise treadmill test and stress echocardiography. Men with positive one or both of the two tests were referred for coronary angiography in order to document CAD. All patients underwent penile Doppler ultrasonography and carotid-femoral pulse wave velocity (PWV) evaluation. Reduced penile peak systolic velocity (PSV) is associated impaired penile arterial function and increased atherosclerotic burden. Aortic/penile index (API) was developed to describe the severity of extracoronary vascular dysfunction with the formula: $\text{API} = \text{PWV}/\text{PSV}$.

Results: Coronary angiography revealed stenotic lesions in 19 (12%) patients. The prevalence of Grade II/III hypertension was not different between CAD patients and subjects without CAD. CAD patients compared to subjects without CAD had higher PWV (9.3 vs 8.6 m/s, $P < 0.01$), lower PSV (23 vs 30 cm/s, $P < 0.01$) and a higher API (left figure). Right figure illustrates the diagnostic performance of API for CAD prediction. Further analysis revealed that the area under the curve (AUC) for API was significantly greater than the AUC for either parameter alone (all $P < 0.05$). **Conclusions:** API allows an accurate interpretation for the interrelationships between hypertension, ED and CAD and predicts CAD with high values of both sensitivity and specificity. Our findings allow identification of hypertensive men who might warrant more intensive follow-up.



P5.10

DISSOCIATION OF CARDIAC REMODELLING AND AORTIC STIFFNESS INDICES AS OF CARDIAC/VASCULAR RISK, AND THEIR RELATIONSHIP TO VITAMIN D3

R. Rezaei¹, S. Anderson¹, N. Sattar², J. K. Cruickshank^{1,3}

¹University of Manchester, Manchester, United Kingdom

²University of Glasgow, Glasgow, United Kingdom

³now King's College, University of London, London, United Kingdom

Aims: To investigate if concentric cardiac remodelling is related to central aortic Pulse Wave Velocity (aPWV) and to circulating vitamin D3, in men of different ethnic groups and cardiac/vascular risk.

Methods: Community samples of 194 men, Afro-Caribbean (n=64, age: 54±10yr) at higher stroke but lower CHD risk, South Asian (n=68, 55±10yr) at high CHD risk and European (n=62, 57±9yr), reference risk, had standard echocardiographic LV geometry measurements, and aPWVAG by Arteriograph. In a sub-sample of 48, these indices were also measured by cardiac MR.

Results: Concentric geometry quantified as relative wall thickness (RWT>0.42) was commoner among AfC (59%) and SA (49%) than Europeans (24%) ($p < 0.001$). RWT was by 0.05(0.01) higher in SA and AfC than in Europeans, as was Mass/Volume by MR. Mean(SE) 25(OH)D3 in SA and AfC was 21(3) and 14(3) nmol/L < Europeans. In regression models, adjusting for age, systolic blood pressure (BP), diabetes and BMI, 25(OH)D negatively correlated with indices of left ventricle (LV) concentric geometry (RWT) by echocardiography. A 1SD (18 nmol/L) rise in 25(OH)D predicted a 0.23 SD drop in RWT ($p = 0.002$). Adjusted for age, SBP and diabetes, 25(OH)D was also inversely related to aPWVAG, (B(SE))=-0.013(0.004), $p < 0.001$. However, RWT & aPWVAG were poorly if 'significantly' correlated ($r = 0.18$ $p = 0.01$) & not in the smaller MR sample.

Conclusions: vitamin D status in AfC and SA compared to European men was negatively associated with both LV concentric remodelling and aPWV, although cardiac geometry and aPWV were poorly related themselves. Vitamin D intervention trials are required.

P5.11

EFFECT OF CAROTID BARORECEPTOR ACTIVATION ON VENTRICULAR FUNCTION AND CENTRAL ARTERIAL HEMODYNAMICS: A CASE REPORT BASED ON INVASIVE PRESSURE-VOLUME LOOP ANALYSIS

P. Segers¹, S. J. Vermeersch¹, R. Wachter², D. Georgakopoulos³

¹Ghent University, Gent, Belgium

²Georg-August Universität, Göttingen, Germany

³CVRx, Minneapolis, MN, United States of America

Background: Carotid baroreceptor activation (CBA) is being explored as anti-hypertensive therapy in patient with resistant hypertension. In this study, we demonstrate the effect of CBA on cardiac performance and central arterial hemodynamics based on invasive data measured in a 78 year old male patient with resistant hypertension who also showed clinical symptoms of heart failure. **Materials and methods** Measurements were performed upon implantation of a CBA device (CVRx, Minneapolis, Mn), with a pressure-volume catheter inserted via the groin and advanced into the left ventricle (LV). Pressure-volume loops were acquired at baseline and with CBA (Figure-left). Upon catheter pullback, pressure recordings were made (baseline and CBA) in the aortic root (Figure-right). A flow waveform was derived from the volume data, and combined with the aortic root pressure to assess wave reflection via wave decomposition.

Results: CBA slowed heart rate from 64 to 46 bpm, reduced central systolic (from 165 to 107 mmHg) and pulse (92 to 56 mmHg) pressure, while stroke volume increased by about 30%. The LV end-diastolic pressure-volume relation was lowered (Figure-left), reducing end-diastolic pressure from about 19 to 13 mmHg. CBA lowered characteristic impedance by 40%, leading to a similarly large reduction in forward pressure wave amplitude (from 90 to 56 mmHg). Backward wave amplitude was lowered from 31 to 23 mmHg. **Conclusions** This in vivo case report demonstrates not only profound favourable effects of CBA on LV afterload, but a concomitant effect on LV filling dynamics which might particularly be important in patients with heart failure.

