



## Artery Research

ISSN (Online): 1876-4401

ISSN (Print): 1872-9312

Journal Home Page: <https://www.atlantis-pub.com/journals/artres>

---

### 1.5: DEEP VASCULAR PHENOTYPING IN PATIENTS WITH FIBROMUSCULAR DYSPLASIA

Rosa Maria Bruno, Louise Marais, Hakim Khettab, Aurélien Lorthioir, Xavier Jeunemaitre, Stéphane Laurent, Pierre Boutouyrie, Michel Azizi

**To cite this article:** Rosa Maria Bruno, Louise Marais, Hakim Khettab, Aurélien Lorthioir, Xavier Jeunemaitre, Stéphane Laurent, Pierre Boutouyrie, Michel Azizi (2018) 1.5: DEEP VASCULAR PHENOTYPING IN PATIENTS WITH FIBROMUSCULAR DYSPLASIA, Artery Research 24:C, 68–68, DOI: <https://doi.org/10.1016/j.artres.2018.10.022>

**To link to this article:** <https://doi.org/10.1016/j.artres.2018.10.022>

Published online: 7 December 2019

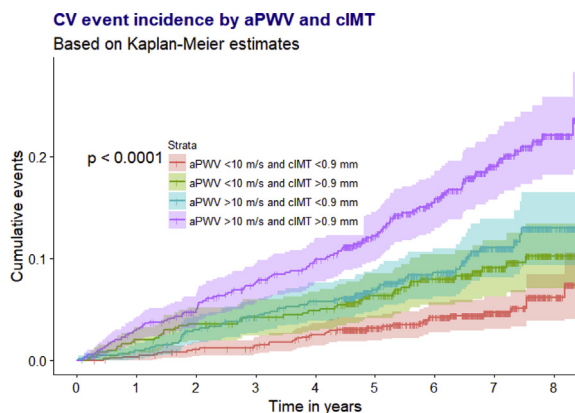
<sup>2</sup>Lund University, Department of Clinical Sciences, Skane University Hospital, Jan Waldenströms gata 15, Level 5, S-20502, Malmö, Sweden

**Background:** This study aims to translate two arterial measurements, aortic Pulse Wave Velocity (aPWV) and carotid Intima-Media Thickness (cIMT), into a combined Vascular Ageing Index (VAI), to evaluate the predictive power of VAI and utilize it to identify a sub-group with Healthy Vascular Ageing (HVA).

**Methods:** In all, 2718 subjects were included from the CV arm of the Malmö Diet Cancer study (median age 72 years, 62.2% females). Median follow-up for CV events (N = 269) was 6.5 years. VAI was created by a function that combined aPWV and cIMT. Cox regressions for aPWV, cIMT and VAI, adjusted for conventional CV risk factors, were carried out. aPWV and cIMT were mutually adjusted for while VAI was analyzed separately. Model improvements for a model of conventional CV risk factors were assessed using Harrell's c-statistic and continuous Net Reclassification Index (NRI).

**Results:** Cox regression Results: (fully adjusted model): 1 SD of log(-aPWV), HR: 1.22 (95% CI: 1.03–1.42, P = 0.010), 1 SD of log (cIMT), HR: 1.29 (95% CI: 1.13–1.47, P < 0.001), 1 SD of log-VAI, HR: 1.43 (95% CI: 1.22–1.68, P < 0.001) (Figure1). C-statistics: 0.715 (conventional risk factor model), 0.721 (+aPWV), 0.734 (+aPWV and cIMT) and 0.732 (+VAI). NRI showed a significant (P < 0.001) improvement for classification of event-free subjects when adding aPWV and cIMT or VAI.

**Conclusion:** VAI added marginally to prediction of CV events. However, the classification of subjects who remained free from CV events was significantly improved.



#### 1.4

##### PROGNOSTIC VALUE OF PROXIMAL AORTA LONGITUDINAL STRAIN IN MARFAN SYNDROME

Andrea Guala <sup>1</sup>, Jose Rodríguez-Palomares <sup>1</sup>, Aroa Ruiz-Muñoz <sup>1</sup>, Minerva Gandara <sup>1</sup>, Violeta Sanchez <sup>2</sup>, Alberto Forteza <sup>3</sup>, David Garcia-Dorado <sup>4</sup>, Artur Evangelista <sup>4</sup>, Gisela Teixido-Tura <sup>1</sup>

<sup>1</sup>Hospital Vall d'Hebron, Department of Cardiology, VHIR, Universitat Autònoma de Barcelona, Barcelona, Spain

<sup>2</sup>University Hospital 12 de Octubre, Madrid, Spain

<sup>3</sup>Hospital Puerta del Hierro, Madrid, Spain

<sup>4</sup>Hospital Vall d'Hebron, Department of Cardiology, VHIR, Universitat Autònoma de Barcelona, Barcelona, Spain

**Background:** Aortic root dilation and type A aortic dissection are the most common cardiovascular complications of Marfan syndrome (MFS). Current clinical management of MFS patients relies on a close follow-up of aortic root diameter and preventive aortic root surgery in case of severe or fast-progressing dilation. However, as the capacity of aortic diameter to predict type A aortic dissection is limited, new non-invasive biomarkers to improve risk stratification are needed. We investigated the capacity of proximal aorta circumferential and longitudinal strain and ascending aorta distensibility to predict aortic root diameter dilation and occurrence of major cardiovascular events in Marfan patients.

**Methods:** Eighty-seven Marfan patients without previous cardiac/aortic surgery or dissection were prospectively included in a multicenter follow-up. Proximal aorta longitudinal and circumferential strain and distensibility were computed from baseline CMR.

**Results:** During a follow-up of  $81.6 \pm 17$  months, 11 patients underwent elective aortic root replacement, and 2 experienced type A aortic dissections. Mean dilation rate was  $0.65 \pm 0.67$  mm/year and z-score growth rate  $0.07 \pm 0.13$  1/year. In multivariable analysis, proximal aorta longitudinal strain but not circumferential strain and distensibility were independent predictors of diameter growth-rate (p = 0.001, p = 0.385 and p = 0.381, respectively), z-score growth-rate (p = 0.018, p = 0.515 and p = 0.484, respectively) and major cardiovascular events (p = 0.018, p = 0.064 and p = 0.205, respectively) corrected for demographic and clinical characteristics and baseline aortic root diameter.

**Conclusions:** In Marfan syndrome, proximal aorta longitudinal strain is an independent predictor of aortic root dilation and major cardiovascular events beyond aortic root diameter and established risk factors.

#### 1.5

##### DEEP VASCULAR PHENOTYPING IN PATIENTS WITH FIBROMUSCULAR DYSPLASIA

Rosa Maria Bruno <sup>1,2</sup>, Louise Marais <sup>2</sup>, Hakim Khettab <sup>3</sup>, Aurélien Lorthioir <sup>3</sup>, Xavier Jeunemaitre <sup>4,2</sup>, Stéphane Laurent <sup>3,2</sup>, Pierre Boutouyrie <sup>3,2</sup>, Michel Azizi <sup>3</sup>

<sup>1</sup>University of Pisa, Italy

<sup>2</sup>INSERM U970, Paris, France

<sup>3</sup>APHP, Hôpital Européen Georges Pompidou, Paris, France

<sup>4</sup>APHP, Hôpital Européen Georges Pompidou, France

**Background:** Fibromuscular dysplasia (FMD) is a non-atherosclerotic, non-inflammatory vascular disease involving medium-sized muscular arteries, whose pathophysiology is still unknown.

**Objectives:** We aimed at identifying systemic vascular alterations in usually non-affected arteries of patients with multifocal renal FMD by a deep imaging-based phenotyping.

**Methods:** This cross-sectional study included FMD patients (n = 50, 84% hypertensives), age-, sex and BP-matched patients with primary hypertension (PH, n = 50) and healthy normotensive subjects (HS, n = 50). Brachial artery (BA) endothelium-dependent flow-mediated dilation (EDD) and endothelium-independent vasodilation (EID) were studied. Aortic stiffness was assessed by carotid-to-femoral pulse wave velocity (PWV). We quantified abnormal echographic patterns in the common carotid wall by the triple signal score. Common carotid Young's incremental elastic modulus (Einc)/stress curves were also plotted.

**Results:** FMD patients had impaired EID compared to PH and HS (p = 0.008, after adjustment for confounders p = 0.002), smaller BA diameter but comparable EDD and PWV. The prevalence of triple signal score >6 was 56%, 40%, 24% in FMD, PH and HS respectively (p = 0.005). FMD, but not PH, was significantly associated with triple signal (beta = 0.143, p = 0.022, r<sup>2</sup> = 0.058). Impaired EDD was only present in FMD patients with triple signal score >6 (p for interaction = 0.047). For a given stress value of 80 kPa, Einc was higher in the presence of a triple signal score >6, especially in FMD patients.

**Conclusions:** Non-affected musculo-elastic and muscular arteries in patients with multifocal renal FMD exhibit a cluster of functional and structural abnormalities, while elastic arteries are preserved. Triple signal in FMD may identify a distinct vascular phenotype.

#### 1.6

##### AORTIC PULSE WAVE VELOCITY IN PORTUGUESE CHILDREN AND ADOLESCENTS – RESULTS FROM THE PORTUGUESE VASCULAR PHENOTYPE IN CHILDREN AND ADOLESCENTS (PORT-VASPH) COHORT

Telmo Pereira <sup>1</sup>, João Maldonado <sup>2,3</sup>, Margarida Carvalho <sup>3</sup>

<sup>1</sup>Polytechnic Institute, Coimbra Health School, Portugal

<sup>2</sup>Polytechnic Institute, Coimbra Health School, Portugal

<sup>3</sup>Clínica da Aveleira, Coimbra, Portugal

**Introduction:** The PORT-VASPh Cohort was designed to contribute to a better understanding of vascular function in children and adolescents, mostly focusing PWV and other complementary aspects of arterial hemodynamics.

**Methods:** The PORT-VASPh cohort is a prospective and observational study, with 953 children and adolescents enrolled, 40% females, age ranging from 5 to 17 years (mean age:  $12.08 \pm 2.92$  years). The overall health profile for each participant was defined based on three clinical evaluations, in which blood pressure (BP) was measured under standard conditions over the