



## Artery Research

ISSN (Online): 1876-4401

ISSN (Print): 1872-9312

Journal Home Page: <https://www.atlantis-press.com/journals/artres>

---

### **4.8: PLACENTAL NA/K-ATPASE INHIBITOR MARINOBUFAGENIN INDUCES ARTERIAL WALL FIBROSIS IN PREECLAMPSIA**

Olga Fedorova, Natalia Aglakova, Yulia Grigorova, Vitalily Reznik, Valintina Zernetkina, Wen Wei, Edward Lakatta, Alexei Bagrov

**To cite this article:** Olga Fedorova, Natalia Aglakova, Yulia Grigorova, Vitalily Reznik, Valintina Zernetkina, Wen Wei, Edward Lakatta, Alexei Bagrov (2018) 4.8: PLACENTAL NA/K-ATPASE INHIBITOR MARINOBUFAGENIN INDUCES ARTERIAL WALL FIBROSIS IN PREECLAMPSIA, Artery Research 24:C, 77–78, DOI: <https://doi.org/10.1016/j.artres.2018.10.047>

**To link to this article:** <https://doi.org/10.1016/j.artres.2018.10.047>

Published online: 7 December 2019

#### 4.6 INFLAMMATION AND AORTIC STIFFNESS. A MULTICENTRE LONGITUDINAL STUDY IN PATIENTS WITH INFLAMMATORY BOWEL DISEASE

Luca Zanolì<sup>1</sup>, Kadir Ozturk<sup>2</sup>, Maria Cappello<sup>3</sup>

<sup>1</sup>Nephrology, Department of Clinical and Experimental Medicine, Policlinico Universitario, University of Catania, Via Santa Sofia 78, 95123, Catania, Italy

<sup>2</sup>Department of Gastroenterology, Gulhane School of Medicine, Etlik, Ankara, Turkey

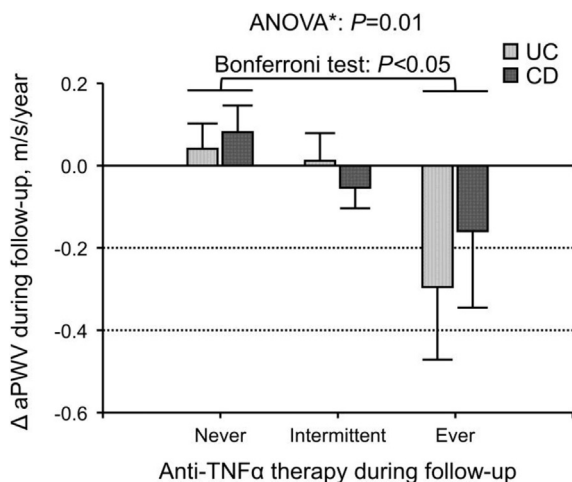
<sup>3</sup>DIBIMIS, School of Medicine, University of Palermo, Italy

**Background:** Inflammatory Bowel Disease (IBD) is characterized by a low prevalence of traditional risk factors, an increased aortic pulse-wave velocity (aPWV) [1] and an excess of cardiovascular events. We have previously hypothesized that the difference between expected and observed cardiovascular risk could be explained by chronic inflammation [2]. In this multicentre longitudinal study, we tested the hypothesis that increased aPWV is reversible with anti-tumor necrosis factor- $\alpha$  (anti-TNF $\alpha$ ) therapy.

**Methods:** We enrolled 334 patients (82 patients with ulcerative colitis [UC], 85 patients with Crohn's disease [CD] and 167 healthy control subjects matched for age, sex and mean blood pressure) from 3 Centres in Europe and followed up them for 4 years (range 2.5–5.7 years).

**Results:** At baseline, IBD patients had higher aPWV than controls. IBD patients in remission and those treated with anti-TNF $\alpha$  during follow-up experienced an aortic destiffening whereas aPWV increased in those with active disease and those treated with salicylates (Figure 1,  $P = 0.01$ ). Disease duration ( $P = 0.02$ ) and, in UC patients, the increase in CRP during follow-up ( $P = 0.02$ ) were associated with aortic stiffening. All these results were confirmed after adjustment for major confounders. Finally, the duration of anti-TNF $\alpha$  therapy was not associated with the magnitude of the reduction in aPWV at the end of follow-up ( $P = 0.85$ ). This finding could suggest that anti-TNF $\alpha$  therapy has a beneficial effect on functional arterial stiffening.

**Conclusions:** Long-term anti-TNF $\alpha$  therapy reduced aPWV, an established surrogate measure of cardiovascular risk, in patients with IBD. This suggests that effective control of inflammation may reduce cardiovascular risk in these patients.



#### References

- Zanolì L, Boutouyrie P, Fatuzzo P, et al. Inflammation and Aortic Stiffness: An Individual Participant Data Meta-Analysis in Patients With Inflammatory Bowel Disease. *J Am Heart Assoc.* 2017;6(10). doi: 10.1161/JAHA.117.007003
- Zanolì L, Rastelli S, Inserra G, Castellino P. Arterial structure and function in inflammatory bowel disease. *World J Gastroenterol.* 2015;21(40):11304-11. doi: 10.3748/wjg.v21.i40.11304

#### 4.7

##### THE EFFECT OF TRANSCATHETER AORTIC VALVE IMPLANTATION ON AORTIC STIFFNESS AND HEMODYNAMICS

Vasiliki Gardikioti<sup>1,2</sup>, D. Terentes-Printzios<sup>2</sup>, C. Vlachopoulos<sup>2</sup>,

K. Toutouzias<sup>2</sup>, M. Xanthopoulos<sup>2</sup>, G. Benetos<sup>2</sup>, G. Latsios<sup>2</sup>,

V. Penesopoulou<sup>2</sup>, V. Tsigkou<sup>2</sup>, G. Siasos<sup>2</sup>, E. Vavuranakis<sup>2</sup>, D. Tousoulis<sup>2</sup>

<sup>1</sup>1st Department of Cardiology, Hippokraton General Hospital of Athens, Medical School, National and Kapodistrian University of Athens, Greece

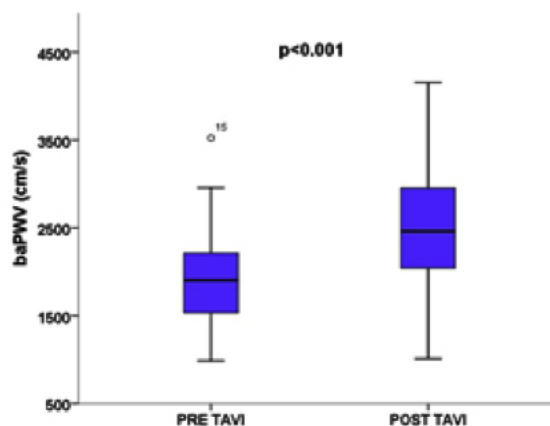
<sup>2</sup>Hippokraton Hospital, University of Athens, 1st Department of Cardiology, Athens, Greece

**Purpose/Background/Objectives:** Aortic stiffness and central hemodynamics are established vascular biomarkers. Transcatheter aortic valve implantation (TAVI) is a promising new technique for the treatment of aortic valve stenosis in elderly patients. We examined the effect of TAVI on the elastic properties of the aorta and on central hemodynamics.

**Methods:** We included fifty patients (mean age  $80.7 \pm 8.3$  years, 27 male) with symptomatic aortic stenosis treated by TAVI. In measurements prior and acutely after the procedure, carotid-femoral pulse wave velocity (cfPWV) and brachial-ankle pulse wave velocity (baPWV) were used as indicators of arterial stiffness. Aortic pressures and aortic augmentation index corrected for heart rate [AIx@75] were used to assess aortic hemodynamics.

**Results:** There was a statistically significant increase in measurements of arterial stiffness ( $7.7 \pm 1.5$  vs  $8.3 \pm 1.9$  m/s for cfPWV and  $1931 \pm 577$  vs.  $2469 \pm 682$  cm/s with  $p = 0.006$  and  $p0.05$ ). Peripheral pulse pressure ( $p = 0.047$ ) increased significantly and peripheral DBP ( $p = 0.05$ ) decreased significantly.

**Conclusions:** Our study led to the observation that patients undergoing TAVI present with an increase in arterial stiffness in the acute phase after the procedure, accompanied by an improvement of wave reflections. At the same time, a dissociation between aortic and peripheral BP after TAVI was observed, which may indicate important clinical value.



#### 4.8

##### PLACENTAL NA/K-ATPASE INHIBITOR MARINOBUFAGENIN INDUCES ARTERIAL WALL FIBROSIS IN PREECLAMPSIA

Olga Fedorova<sup>1</sup>, Natalia Aglakova<sup>2</sup>, Yulia Grigороva<sup>3</sup>, Vitalily Reznik<sup>4</sup>, Valintina Zernetkina<sup>3</sup>, Wen Wei<sup>3</sup>, Edward Lakatta<sup>3</sup>, Alexei Bagrov<sup>5</sup>

<sup>1</sup>National Institute on Aging, NIH, Baltimore, MD, USA

<sup>2</sup>Sechenov Institute of Evolutionary Physiology and Biochemistry, St. Petersburg, Russia

<sup>3</sup>Laboratory of Cardiovascular Science, National Institute on Aging, NIH, Baltimore, MD, USA

<sup>4</sup>Department of Obstetrics and Gynecology, School of Pediatric Medicine, St. Petersburg, Russia

<sup>5</sup>Sechenov Institute of Evolutionary Physiology, St. Petersburg, Russia

**Background:** Previous studies implicated cardiotonic steroids, including Na/K-ATPase inhibitor marinobufagenin (MBG), in the pathogenesis of preeclampsia (PE). Immunoneutralization of heightened MBG by Digibind, a digoxin antibody, reduces blood pressure (BP) in patients with PE, and anti-MBG monoclonal antibody lessens BP in a rat model of PE. Recently, we demonstrated that MBG induces fibrosis in cardiovascular tissues via a mechanism involving inhibition of Fli1, a nuclear transcription factor and a negative regulator of collagen-1 synthesis.

**Objectives and Methods:** We hypothesized that in PE, elevated placental MBG levels is associated with development of fibrosis of umbilical arteries. Thirty patients with PE (mean BP =  $118 \pm 4$  mmHg;  $29 \pm 2$  years; 35 weeks gest. age) and 26 gestational age-matched normal pregnant subjects (mean BP =  $92 \pm 2$  mmHg; controls) were enrolled in the clinical study.

**Results:** PE was associated with a higher placental MBG level ( $48.6 \pm 7.0$  vs.  $13.6 \pm 2.5$  nmol/g;  $P < .01$ ), four-fold decrease of Fl11 and two-fold increase of collagen-1 in placenta ( $P < .01$ ) vs. control. PE was associated with five-fold decrease in Fl11 level and two-fold increase in collagen-1 level in the PE umbilical arteries vs. those from the normal subjects ( $P < .01$ ). Isolated rings of umbilical arteries from the subjects with PE exhibited impaired response to the relaxant effect of sodium nitroprusside, vs. control vessels ( $EC_{50} = 141$  nmol/L vs.  $EC_{50} = 0.9$  nmol/L;  $P < .001$ ). In vitro 10 nmol MBG mimicked effect of PE, and monoclonal anti-MBG antibody reversed this effect. **Conclusion:** These results demonstrate that elevated placental MBG level is implicated in the development of fibrosis umbilical arteries in PE.

#### Reference

Supported in part by the National Institute on Aging, NIH and by Russian Scientific Foundation grant No 18-15-00222.

### Oral Session V – Brain

#### 5.1

##### STRESS-INDUCED SYMPATHETIC ACTIVITY AND THE RETINAL VASCULATURE: THE SABPA PROSPECTIVE STUDY

Leoné Malan<sup>1</sup>, Nicolaas Malan<sup>2</sup>, Wayne Smith<sup>2</sup>

<sup>1</sup>North-West University, South Africa

<sup>2</sup>North-West University, Potchefstroom, South Africa

**Objectives:** Retinal vessels are part of the intracranial vasculature and analysis thereof complements behavioural and brain measures. Mental stress was related to downregulation of norepinephrine in Africans. Hence we continue by assessing prospective associations between sympathetic nervous system activity and retinal vessel calibres.

**Methods:** Black and Caucasian participants ( $n = 275$ ;  $45 \pm 9$  years) were stratified into tertiles according norepinephrine:creatinine (NE:Cr) ratio at baseline. Three year prospective % changes ( $\Delta$ ) for depression (PHQ-9), urinary NE:Cr, serum cortisol and High-Density-Lipoprotein (HDL, neuronal-membrane-integrity and ischemic stroke risk marker) were obtained. At 3yr-follow-up, retinal microvascular calibres were quantified from digital images in the mydriatic eye and salivary cortisol (sC) and  $\alpha$ -amylase (sAA), adrenergic activity marker were obtained.

**Results:** Only the low NE:Cr-tertile group (44% Black; 64% Men), showed chronic depression and hypertension prevalence. Over 3yrs, their NE:Cr increased whereas cortisol and HDL decreased. At 3yr-follow-up, wider venules (stroke risk marker) were apparent in the low- compared to the high-tertile group (Figure 1). In the low-tertile group, chronic depression was associated with stroke risk markers, wider venules [OR 1.7;  $P = 0.03$ ] and lower HDL [OR 4.8;  $P = 0.04$ ]. In this group, arteriole narrowing was associated with  $\Delta$ NE:Cr,  $\Delta$ cortisol and sAA; whilst a wider venule was associated with  $\Delta$ NE:Cr and sC.

**Conclusions:** In reaction to depression and low NE:Cr levels, homeostatic reflexes facilitated upregulation of norepinephrine and concurrent downregulation of cortisol. Stress-induced sympathetic nervous system activity however disturbed myogenic tone, neuronal-membrane-integrity and retinal venular widening; increasing the susceptibility for ischemic stroke.

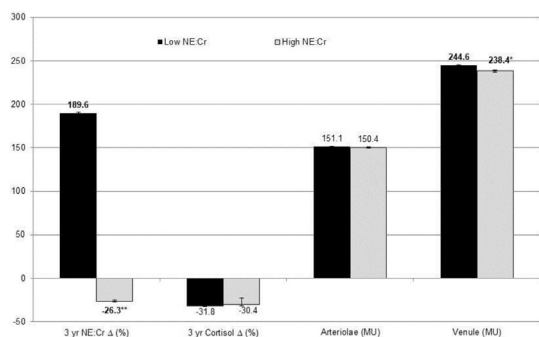


Figure 1: Comparing (mean  $\pm$  SE) sympathetic activity marker changes ( $\Delta$ %) over 3 years and retinal vessel diameters at follow-up in low vs. high norepinephrine:creatinine tertiles. Confounders included: age, log gamma glutamyl transferase, high density lipoprotein cholesterol, diastolic ocular perfusion pressure and retinopathy. \* $P \leq 0.05$ ; \*\* $P \leq 0.001$ .

#### 5.2

##### DIFFERENTIAL CHARACTERISTICS BETWEEN AORTIC PRESSURE AUGMENTATION AND CAROTID FLOW AUGMENTATION: CLINICAL IMPLICATIONS FOR CEREBRAL WHITE MATTER HYPERINTENSITIES

Junichiro Hashimoto<sup>1</sup>, Berend Westerhof<sup>2</sup>, Sadayoshi Ito<sup>3</sup>

<sup>1</sup>Miyagi University of Education Medical Center, Sendai, Japan

<sup>2</sup>VU University, Amsterdam, the Netherlands

<sup>3</sup>Tohoku University, Sendai, Japan

**Background:** Aortic stiffness and pressure wave reflection have been found to be associated with age-related cerebral microvascular disease, but the underlying mechanism remains obscure. We hypothesized that cerebral (carotid) flow augmentation potentially mediates these associations.

**Methods:** Doppler waveforms were recorded in 286 patients with hypertension to measure the carotid flow augmentation index (FAIx) as the late/early systolic velocity amplitude ratio. Tonometric waveforms were recorded to estimate the aortic pressure augmentation index (PAIx), aortic compliance, and carotid-femoral and carotid-radial pulse wave velocities (PWVs). Additionally, white matter hyperintensities (WMH) on brain MRI were evaluated using the Fazekas scale.

**Results:** With increasing age, the carotid late-systolic velocity increased whereas the early-systolic velocity decreased, although the aortic augmented pressure increased in parallel with the incident wave height ( $P < 0.001$ ). Both FAIx and PAIx increased with age, but the age-dependent curves were upwardly concave and convex, respectively. FAIx increased exponentially with increasing PAIx ( $r = 0.71$ ). Compared to PAIx, FAIx was more closely ( $P \leq 0.001$ ) correlated with the aortic PWV, aortic compliance, and aortic/peripheral PWV ratio. FAIx was associated with WMH scores independently of confounders including age, gender, diabetes, hypercholesterolemia and aortic PWV ( $P = 0.02$ ), and was more predictive of WMH presence than PAIx. **Conclusions:** Carotid FAIx had closer associations with age, aortic stiffness and cerebral WMH than did aortic PAIx. These results indicate that carotid flow augmentation (enhanced by aortic stiffening and pressure wave reflection from the lower body) causes microcerebrovascular injury potentially through increasing cerebral flow pulsations, but this detrimental effect is even greater than that estimated from PAIx.

#### 5.3

##### CAROTID ARTERY STIFFNESS INCREASES THE RISK OF INCIDENT DEPRESSIVE SYMPTOMS: THE PARIS PROSPECTIVE STUDY 3

Thomas van Sloten<sup>1</sup>, Pierre Boutouyrie<sup>2</sup>, Muriel Tafflet<sup>3</sup>, Lucile Offredo<sup>3</sup>, Frédérique Thomas<sup>4</sup>, Catherine Guibout<sup>5</sup>, Rachel Climie<sup>3</sup>, Cedric Lemogne<sup>6</sup>, Bruno Pannier<sup>4</sup>, Stephane Laurent<sup>2</sup>, Xavier Jouven<sup>3</sup>, Jean-philippe Empana<sup>3</sup>

<sup>1</sup>INSERM, UMR-S970, Paris Cardiovascular Research Center, Department of Epidemiology and Arterial Mechanics, Paris, France

<sup>2</sup>INSERM, UMR-S970, Paris Cardiovascular Research Center, Department of Arterial Mechanics, Paris, France

<sup>3</sup>INSERM, UMR-S970, Paris Cardiovascular Research Center, Department of Epidemiology, Paris, France

<sup>4</sup>Preventive and Clinical Investigation Center, Paris, France

<sup>5</sup>INSERM, UMR-S970, Paris Cardiovascular Research Center, Department of Epidemiology, Paris, France

<sup>6</sup>INSERM, U894, Psychiatry and Neuroscience Center, Paris, France

**Background:** Late-life depression is related to poor quality of life and increased risk of mortality and cardiovascular disease. Effective interventions for prevention and treatment of late-life depression need to be developed, which requires a better understanding of late-life depression risk factors. Arterial stiffness may contribute to late-life depression via cerebrovascular damage, but evidence is scarce.

**Aim:** To investigate the association between carotid artery stiffness and incident depressive symptoms in a large community-based cohort study.

**Methods:** This longitudinal study included 7,013 participants (60 (SD 6) years; 36% women) free of depressive symptoms at baseline. Carotid stiffness (high-resolution echotracking) was determined at baseline. Presence of depressive symptoms was determined at baseline and at 4 and 6 years of follow-up and was defined as a score  $\geq 7$  on a validated 13-item questionnaire (Q2DA) and/or new use of antidepressants. Logistic regression and generalized estimating equations (GEE) were used.