



## Artery Research

ISSN (Online): 1876-4401

ISSN (Print): 1872-9312

Journal Home Page: <https://www.atlantis-pub.com/journals/artres>

---

### **P24: BRACHIAL AND CENTRAL SYSTOLIC BLOOD PRESSURES FROM TWO OSCILLOMETRIC DEVICES (SPHYGMOCOR AND MOBIL-O-GRAPH) OVERESTIMATE HIGH FIDELITY INTRA-ARTERIAL MEASUREMENTS IN CHILDREN AND ADOLESCENTS: RESULTS OF THE KIDCOREBP STUDY**

Jonathan Mynard, Greta Goldsmith, Lucas Eastaugh, Geoff Lane, Gabriella Springall, Alberto Avolio, Joe Smolich, Michael Cheung

**To cite this article:** Jonathan Mynard, Greta Goldsmith, Lucas Eastaugh, Geoff Lane, Gabriella Springall, Alberto Avolio, Joe Smolich, Michael Cheung (2018) P24: BRACHIAL AND CENTRAL SYSTOLIC BLOOD PRESSURES FROM TWO OSCILLOMETRIC DEVICES (SPHYGMOCOR AND MOBIL-O-GRAPH) OVERESTIMATE HIGH FIDELITY INTRA-ARTERIAL MEASUREMENTS IN CHILDREN AND ADOLESCENTS: RESULTS OF THE KIDCOREBP STUDY, Artery Research 24:C, 86–87, DOI: <https://doi.org/10.1016/j.artres.2018.10.077>

**To link to this article:** <https://doi.org/10.1016/j.artres.2018.10.077>

Published online: 7 December 2019

**Results:** The proportion of males (54 vs 76%), Family history + (42 vs 73%) and smokers (19 vs 30%) were higher in P+. IMT and EF were significantly abnormal but not PWV or CBP in P+.

**Conclusion:** In a very selective sample of middle age patients, the genetic burden and the functional alterations seem to be closely related to the presence of atherosclerosis suggesting a pathogenetic predominance over epigenetic factors.

#### Poster Session I – Hypertension I

P22

#### THE ROLE OF RENAL DYSFUNCTION ON TARGET ORGAN DAMAGE AND CARDIOVASCULAR RISK IN HYPERTENSIVES

Eirini Solomou<sup>1</sup>, Dimitrios Terentes Printzios<sup>2</sup>, Charalampos Vlachopoulos<sup>2</sup>, N. Ioakimidis<sup>2</sup>, K. Aznaouridis<sup>2</sup>, I. Koutagiar<sup>2</sup>, V. Gardikioti<sup>2</sup>, E. Sigala<sup>2</sup>, D. Tousoulis<sup>2</sup>

<sup>1</sup>First Academic Cardiology Clinic, Hippokraton General Hospital, Athens, Greece

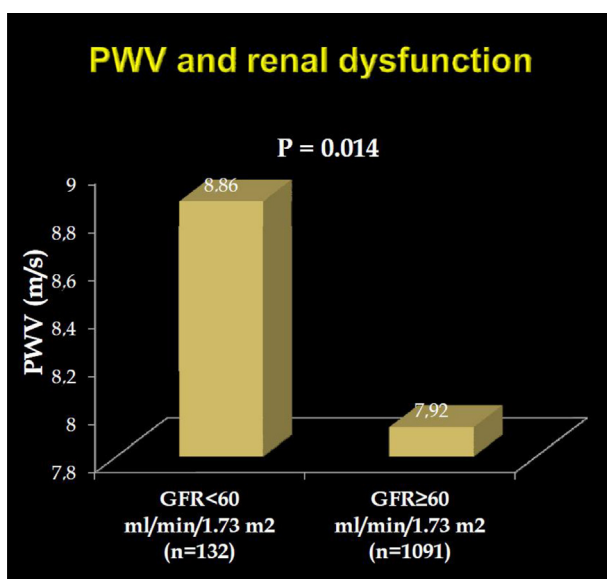
<sup>2</sup>1st Cardiology Department, Athens Medical School, Hippokraton General Hospital, Athens, Greece

**Purpose/Background/Objective:** Hypertension is associated with increased left ventricular (LV) hypertrophy, aortic stiffness and renal dysfunction, which are all predictors of cardiovascular risk. We investigated the effect of renal dysfunction on LV mass and aortic stiffness in hypertensives.

**Methods:** We enrolled 1223 consecutive hypertensives (mean age 53.0 ± 11.6 years, 726 males). We estimated the glomerular filtration ratio (GFR) using the MDRD formula. We classified our population as hypertensives with moderate to severe renal dysfunction (GFR ≥ 60 ml/min/1.73 m<sup>2</sup>, n = 1091). LV mass index (LVMI) was assessed echocardiographically and calculated using the Devereux formula. Aortic stiffness and wave reflections were assessed with pulse wave velocity (PWV) and augmentation index (AIx), respectively. Ten-year cardiovascular risk was estimated with Framingham Risk score.

**Results:** After adjustment for age, gender, mean blood pressure, body-mass index, diabetes mellitus, low-density lipoprotein and C-reactive protein hypertensives with GFR < 60 ml/min/1.73 m<sup>2</sup> compared to hypertensives with GFR ≥ 60 ml/min/1.73 m<sup>2</sup> had higher PWV levels (8.86 m/s vs. 7.92 m/s, p = 0.014), higher LVMI (119.5 g/m<sup>2</sup> vs. 114.9 g/m<sup>2</sup>, p = 0.012) and higher AIx (31.1% vs. 27.4%, p = 0.05). On the contrary, hypertensives with GFR < 60 ml/min/1.73 m<sup>2</sup> had similar 10-year cardiovascular risk compared to hypertensives with GFR ≥ 60 ml/min/1.73 m<sup>2</sup> (17.3% vs. 13.0%, p = 0.323).

**Conclusions:** Renal dysfunction is associated with LVMI and aortic stiffness. Hypertensives with moderate to severe renal dysfunction despite having similar 10-year cardiovascular risk with hypertensives with normal renal function or mild renal dysfunction, demonstrate higher aortic stiffness and LV mass, implying a possible underestimation of risk by Framingham.



P23

#### THE COMPARISON OF PROGNOSTIC VALUE AMONG ANKLE BRACHIAL PRESSURE INDEX, ARTERIAL STIFFNESS AND PRESSURE WAVE REFLECTION IN SUBJECTS WITH CORONARY ARTERY DISEASE

Kazutaka Kimura

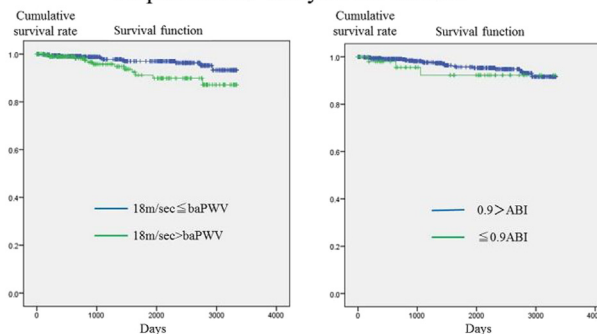
Tokyo Medical University Obaraki Medical Center, Ibaraki, Japan

**Objectives:** The present retrospective study was conducted to compare the prognostic value among ankle brachial pressure index (ABI), brachial-ankle pulse wave velocity (baPWV,) and radial augmentation index (rAI) in patients with coronary artery disease (CAD).

**Methods:** ABI, baPWV and rAI were measured in consecutive patients admitted for the management of CAD into our medical university hospital (n = 821, 677 males and 144 females; age 65.4 ± 10.5 years old), and they were followed at the outpatient department. During the follow-up period, events were defined as in-stent restenosis, new lesion of coronary artery sclerosis and MACE (i.e., acute coronary syndrome, cerebral infarction, cerebral bleeding and cardiac death).

**Results:** Among the study period (4.2 ± 3.0 years), the event of in stent restenosis (n = 99), new lesion of coronary artery sclerosis (n = 77) and MACE (n = 18) were observed respectively. In cox regression analysis after adjustment of age and gender, baPWV > 18m/sec, but not ABI 18 m/sec had significantly higher incidence of MACE (P = 0.021)(Figure). Both baPWV > 18 m/sec (odds 1.61: 95% CI: 1.01 – 2.56, p = 0.044) and ABI

#### Kaplan-Meier analysis for MACE



P24

#### BRACHIAL AND CENTRAL SYSTOLIC BLOOD PRESSURES FROM TWO OSCILLOMETRIC DEVICES (SPHYGMOCOR AND MOBIL-O-GRAPH) OVERESTIMATE HIGH FIDELITY INTRA-ARTERIAL MEASUREMENTS IN CHILDREN AND ADOLESCENTS: RESULTS OF THE KIDCOREBP STUDY

Jonathan Mynard<sup>1,2,3</sup>, Greta Goldsmith<sup>4</sup>, Lucas Eastaugh<sup>4,5</sup>, Geoff Lane<sup>6</sup>, Gabriella Springall<sup>7</sup>, Alberto Avolio<sup>8</sup>, Joe Smolich<sup>9</sup>, Michael Cheung<sup>2,6</sup>

<sup>1</sup>Murdoch Children's Research Institute, Parkville, VIC, Australia

<sup>2</sup>University of Melbourne, Parkville, VIC, Australia

<sup>3</sup>Royal Children's Hospital, Parkville, VIC, Australia

<sup>4</sup>Murdoch Children's Research Institute, Parkville, VIC, Australia

<sup>5</sup>Royal Children's Hospital, Parkville, VIC, Australia

<sup>6</sup>Royal Children's Hospital, Parville, VIC, Australia

<sup>7</sup>Murdoch Children's Research Institute, Parville, VIC, Australia

<sup>8</sup>Macquarie University, Sydney, NSW, Australia

<sup>9</sup>University of Melbourne, Parville, VIC, Australia

**Objective:** This study investigated the accuracy of two oscillometric devices for measuring brachial and central blood pressures (BP) in children and adolescents, using high fidelity intra-arterial measurements as a gold-standard reference.

**Methods:** 57 children and adolescents aged 9.5 ± 4.6 years (mean ± SD, range 3 to 17, 74% < 13 years) without aortic obstruction were recruited. A catheter was inserted into the ascending aorta via the femoral artery during a clinically-indicated procedure. Aortic BP was measured with a Verrata wire (Philips Volcano), along with brachial BP via two oscillometric devices: SphygmoCor XCEL (AtCor Medical, N = 51) and/or Mobil-o-Graph (MoG, IEMGmbH, N = 40). Intra-arterial brachial systolic BP was derived by calibrating the brachial pulse waveform (measured via tonometry after wire

removal) to aortic mean and diastolic BP. For MoG, central pressure was derived through standard systolic-diastolic calibration (MoGC1) as well as mean-diastolic calibration (MoGC2).

**Results:** Mean±SD differences between device and intra-arterial BP are presented in the Table. There was moderate correlation between device and intra-arterial brachial systolic BP ( $R = 0.58$  XCEL,  $R = 0.47$  MoG,  $P < 0.01$ ) and central systolic BP ( $R = 0.69$  XCEL,  $R = 0.64$  MoGC1,  $R = 0.43$  MoGC2,  $P < 0.01$ ). Intra-arterial central-to-brachial pulse amplification factor was  $1.17 \pm 0.16$  (range 0.88 to 1.55), but there was no correlation between device and intra-arterial amplification ( $R = 0.07$  XCEL,  $R = 0.07$  MoGC1,  $R = 0.19$  MoGC2,  $P > 0.18$ ). Results in sub-groups  $\geq 13$  and  $< 13$  years were similar.

**Conclusion:** Both oscillometric devices overestimated brachial and central systolic/pulse BP, exceeding the validation criteria of  $5 \pm 8$  mmHg, and there was no correlation between intra-arterial and device-derived central-to-brachial pulse amplification. Diastolic BP was acceptable.

Table: Mean±SD of the difference (mmHg) between device and intra-arterial measurements.

	Systolic	Diastolic	Pulse
Brachial XCEL	11.2 ± 8.9	-1.7 ± 6.0	13.0 ± 10.1
Brachial MoG	12.9 ± 11.7	-4.7 ± 5.4	17.9 ± 11.4
Central XCEL	8.8 ± 6.6	-0.7 ± 6.2	9.0 ± 7.7
Central MoGC1	7.7 ± 10.3	-3.1 ± 6.1	10.6 ± 11.6
Central MoGC2	22.3 ± 14.3	-3.2 ± 6.6	25.4 ± 15.0

## P25

### 24-HOUR AORTIC AMBULATORY BLOOD PRESSURE IS BETTER ASSOCIATED WITH COMMON CAROTID ARTERY HYPERTROPHY THAN 24-HOUR BRACHIAL PRESSURE – THE SAFAR STUDY

Antonios Argyris<sup>1</sup>, Evaggelia Aissopou<sup>1</sup>, Efthymia Nasothymiou<sup>1</sup>, Theodoros Papaioannou<sup>2</sup>, Jacques Blacher<sup>3</sup>, Michel Safar<sup>3</sup>, Petros Sfrikakis<sup>4</sup>, Athanase Protogerou<sup>1</sup>

<sup>1</sup>Cardiovascular Prevention and Research Unit, Pathophysiology Department, "Laiko" Hospital, National and Kapodistrian University of Athens, Athens, Greece

<sup>2</sup>Biomedical Engineering Unit, 1st Department of Cardiology, "Hippokraton" Hospital, Medical School, National and Kapodistrian University of Athens, Athens, Greece

<sup>3</sup>Paris Descartes University, AP-HP, Diagnosis and Therapeutic Center, Hôtel-Dieu, Paris, France

<sup>4</sup>1st Department of Propaedeutic Medicine, "Laiko" Hospital, Medical School, National and Kapodistrian University of Athens, Athens, Greece

**Objective:** Evidence suggests the superiority of office aortic pressure over brachial on the evaluation of vascular damage and prognosis of cardiovascular disease (CVD); 24-hour ambulatory blood pressure monitoring (ABPM) is regarded the optimal method for assessing blood pressure (BP) profile. The non-invasive 24-hour aortic ABPM is feasible and superior to 24-hour brachial regarding the association with left ventricular hypertrophy and diastolic dysfunction. The aim of our study was to examine the association of 24-hour aortic and brachial ABPM with common carotid artery (CCA) hypertrophy.

**Methods:** Consecutive subjects referred for CVD risk assessment underwent 24-hour aortic and brachial ABPM using a validated oscillometric brachial cuff-based device (Mobil-O-Graph). CCA hypertrophy was assessed by high-resolution ultrasound (assessment of intima media thickness - IMT).

**Results:** 497 subjects (aged  $54 \pm 13$  years, 57% men, 80% hypertensives) were examined. Using Hotelling's-Williams test it was shown that 24-hour aortic BP was significantly better correlated with IMT as compared with brachial BP ( $r: 0.254$  vs.  $r: 0.202$  for right IMT,  $r: 0.244$  vs.  $r: 0.207$  for left IMT,  $p < 0.05$ ). Multivariate analysis (adjusted for possible confounders) revealed superiority of 24-hour aortic BP regarding the association with IMT as well as carotid hypertrophy. Last, in ROC analysis, aortic BP had a higher discriminatory ability compared to brachial for the detection of carotid hypertrophy (AUC: 0.707 vs. 0.656 for right carotid artery hypertrophy, AUC: 0.636 vs. 0.602 for left carotid artery hypertrophy,  $p < 0.05$ ).

**Conclusions:** Non-invasively assessed 24-hour aortic pressure is more strongly associated with CCA IMT and provides a higher discriminatory ability for the detection of CCA hypertrophy.

## P27

### INVASIVE CENTRAL PULSE PRESSURE IS RELATED TO AORTIC ROOT DILATATION

Francesco Tosello<sup>1</sup>, Andrea Guala<sup>2</sup>, Dario Leone<sup>1</sup>, Martina Bollati<sup>1</sup>, Luca Sabia<sup>1</sup>, Fabrizio D'Ascenzo<sup>3</sup>, Claudio Moretti<sup>3</sup>, Franco Veglio<sup>1</sup>, Luca Ridolfi<sup>4</sup>, Alberto Milan<sup>1</sup>

<sup>1</sup>Internal and Hypertension Division, Department of Medical Sciences, AOU Citta' Salute e Scienza of Turin, University of Turin, Turin, Italy

<sup>2</sup>Vall d'Hebron Institute of Research, Barcelona, Spain

<sup>3</sup>Hemodynamic Laboratory, Department of Medical Sciences, AOU Citta' Salute e Scienza of Turin, University of Turin, Turin, Italy

<sup>4</sup>DIATI, Politecnico di Torino, Turin, Italy

**Background:** Aortic root dilation is an established risk factor for aortic dissection. Despite the relations between aortic root remodeling, carotid-femoral pulse wave velocity (cfPWV) and aortic blood pressure have been advocated by several clinical studies and is supported by physical law, invasive data are lacking. We aimed to investigate the relationship between aortic root remodeling, invasively-measured central blood pressure and cfPWV in patients referred for invasive hemodynamic evaluation for suspected coronary disease.

**Methods:** In 71 patients aortic pulse pressure (aoPP) was measured in the proximal aorta with a calibrated fluid-filled pressure catheter. Before entering the hemodynamic room all patients underwent 2D echocardiographic quantification of aortic root diameter and measurement of cfPWV. Aortic root diameter was then expressed into z-score following age, sex and height adjusted reference values (1).

**Results:** Mean age was  $67 \pm 10$  years and 76.1% of patients were men. Invasive aortic systolic pressure was  $146 \pm 23$  mmHg, diastolic pressure was  $78 \pm 13$  mmHg, and aoPP was  $68 \pm 21$  mmHg. Aortic Z-score was  $-0.32 \pm 1.7$ , while CfPWV was  $9.8 \pm 3$  m/s. While  $\text{Log}_{10}\text{cfPWV}$  and aoPP showed a positive relation ( $r=0.426$ ,  $p<0.01$ ) while aoPP and aortic Z-score were inversely associated ( $r = -0.271$ ,  $p = 0.02$ ). In a multivariable linear regression analysis, Z-score and  $\text{Log}_{10}\text{cfPWV}$  were statistically-significant independent predictors of aoPP ( $p = 0.01$  and  $p < 0.01$ , respectively) after adjustment for age, sex, BSA, heart rate, invasive MBP, and stroke volume.

**Conclusions:** In a population referred to invasive coronary hemodynamic evaluation for suspected coronary disease, aortic root remodeling and aortic stiffness were independently associated with a lower aoPP.

## References

1. Devereux RB et al. (2012), Normal Limits in Relation to Age, Body Size and Gender of Two-Dimensional Echocardiographic Aortic Root Dimensions in Persons  $\geq 15$  Years of Age. American Journal of Cardiology 110:1189–1194.

## P29

### MECHANISMS OF VASCULAR ENDOTHELIAL GROWTH FACTOR INHIBITION INDUCED HYPERTENSION

Kaisa Maki-Petaja<sup>1</sup>, Adam McGeoch<sup>2</sup>, Lucy Yang<sup>1</sup>, Annette Hubsch<sup>1</sup>, Carmel McEnery<sup>1</sup>, Fraz Mir<sup>1</sup>, Parag Gajendragadkar<sup>1</sup>, Nicola Ramenatte<sup>3</sup>, Gayathri Anandappa<sup>3</sup>, Christoph Brune<sup>4</sup>, Yoeri Boink<sup>4</sup>, Carola Bibiane-Schontlieb<sup>5</sup>, Paul Meyer<sup>6</sup>, Simon Bond<sup>7</sup>, Ian Wilkinson<sup>1</sup>, Duncan Jodrell<sup>8</sup>, Joseph Cheriyan<sup>9</sup>

<sup>1</sup>Division of Experimental Medicine and Immunotherapeutics, University of Cambridge, UK

<sup>2</sup>Division of Experimental Medicine and Immunotherapeutics, University of Cambridge, UK

<sup>3</sup>Dept of Oncology, University of Cambridge, UK

<sup>4</sup>Department of Applied Mathematics, University of Twente, the Netherlands

<sup>5</sup>Department of Applied Mathematics and Theoretical Physics, University of Cambridge, UK

<sup>6</sup>Department of Ophthalmology, Cambridge University Hospitals NHS Foundation Trust, Cambridge, UK

<sup>7</sup>Cambridge Clinical Trials Unit, Cambridge University Hospitals NHS Foundation Trust, Cambridge, UK

<sup>8</sup>Department of Oncology, University of Cambridge, UK

<sup>9</sup>Division of Experimental Medicine & Immunotherapeutics, University of Cambridge, UK

**Introduction:** Drugs targeting Vascular Endothelial Growth Factor (VEGF) signaling pathway are approved therapies for cancer. Unfortunately, VEGF