

Implementation of the Formula “If Branched” to Identify the Value of *Wedhatama* Fiber Characters in Learning with a Scientific Approach

Suyitno
Universitas PGRI Semarang, Indonesia
suyitno@upgris.ac.id

Ida Zulaeha
Universitas Negeri Semarang
idazulaeha@mail.unnes.ac.id

Abstract---The topic of this study is based on the fact that Javanese language teachers have difficulty identifying the character values and teach it with a scientific approach. The solution offered in this study is to implement the "if branching" in identifying character values and making effective designs learning by implementing scientific approach. This research uses descriptive naturalistic method by process carried out through inventory and classification of character values using "if branch" formula and compiling scientific learning design. In-depth study found 181 values of national character which included religious 29%, honest 7%, tolerance 1%, discipline 6%, hard work 27%, independent 1%, democracy 4%, respect for achievement 3%, communicative 10%, love for peace 2%, love to read 4%, and responsibility 7%. The conclusion of this study is that *Serat Wedhatama* is dominant in religious values, hard work, communicative, responsibility, and discipline, with cumulative 79%. *Serat Wedhatama* learning with a scientific approach is carried out by observing, questioning, analyzing, trying to produce text, and communicating the text referring to the *Serat Wedhatama*.

Keywords: “if branch”, character value, *Serat Wedhatama*, scientific approach

I. INTRODUCTION

The topic of this study is based on the fact that high school Javanese language teachers have difficulty identifying the character values in *Serat Wedhatama* and how to teach them with a scientific approach. The difficulty occurs because the teacher does not use technology that is easy to identify character values and has not implemented an effective approach in the learning process.

Serat Wedhatama as a Javanese literary work needs to be analyzed in depth such as literature in general. Literary works whose birth comes from human values in turn must contribute to the form of the values of life [1] Burhanudin (2017). Literary works were created not only to be enjoyed, but also to be understood and taken advantage of in the form of value, mandate, or advice [2]Suryadi (2017). As a discourse, the *Serat Wedhatama* whose disclosure uses language needs to be studied scientifically in a

framework of critical discourse analysis. In view of critical discourse analysis, language is not something that is autonomous, neutral or value-free in representing a reality. Language is part of social events [3] Hasanah (2017). One function of language is as a means of communicating with other parties for various purposes [4] Apriliyani (2016). In this case, the language used in *Serat Wedhatama* is to convey the message to the reader.

Research on the values of characters in *Serat Wedhatama* has been carried out by [5] Wibawa (2013) who concluded that *Serat Wedhatama* contains noble teachings to build Javanese spiritual practice. [6] Sutarno and Muya Barida (2017) concluded that *Serat Wedhatama* contains noble values and teachings and can be used as material for guidance and counseling. [7] Pratiwi and Suwanto (2018) suggest that *Serat Wedhatama* contains behavioral guidance that can be the basis of a strategy for developing local culture-based character education. In another part, [8] Apollo (2018) made a conclusion that in the *Serat Wedhatama*, specifically Kinanthi's *pupuh* can be used as a torch to lead humans back to their essence, namely *manunggaling kawula-Gusti*.

In the learning process, the right design is needed. A teacher must be prepared in terms of determining the right learning design for students, creative and innovative basic teaching skills, classroom management, adjusting learning to the student environment, limiting problems that arise, and evaluating learning that meets the criteria [9] Zulaeha (2015). Regarding the evaluation of learning, [10] Wagiran (2015) recommends that teachers should not ignore the ideal concepts and theories of learning evaluation. This needs to be emphasized due to the results of research on negative trends carried out by social science teachers. [11] Musadad (2013) suggested the results of a study which concluded that the learning process built by social science teachers tended to be boring because it prioritized cognitive aspects and memorization. Priority only makes students know about something. This is not constructive because

students should be guided to be able to create or do something based on something [12] Chatib (2012: 74-76). The negative habits above need to be changed in a more advanced direction by dismantling less productive traditions. [13] Furthermore Kasali (2014: 118) emphasizes that Indonesia needs a growing mentality, positive souls initiating new ways, critical thinking skills against myths, and encouraging, not punishing learning methods that make students confused.

The solution offered in this study is to implement the "if branching" formula in identifying character values contained in *Serat Wedhatama* and making new designs in *Serat Wedhatama* learning by implementing a scientific approach. [14] Lewis Dalam (Soengeng 2016) states that character values are positive traits and characteristics. [15] According to Sentanu (2017: 278), characters are inherent in human identity and name. Nationally, the nation's character encompasses religion, honesty, tolerance, discipline, hard work, creative, independent, democratic, curiosity, national spirit, love for the country, respect for achievement, communicative, peace-loving, fond of reading, caring for the environment, caring social, and responsibility [16] BP3K (2010: 8-10).

This study aims to find a way to use the if branched formula to identify the character values in *Serat Wedhatama* and formulate a formula in *Serat Wedhatama* learning based on a scientific approach. Thus, the problems discussed in this study are (1) how to use the if branched formula to identify the character values in *Serat Wedhatama*; and (2) how is the formula in *Serat Wedhatama* learning based on the scientific approach.

II. METHODS

The method used in this study is a naturalistic descriptive method that is naturally describing character values in *Serat Wedhatama*. The steps taken in this study are: (1) inventory of character values in *Serat Wedhatama* using the if branched formula in the eczema program, (2) classification of inventoried character values, and (3) formulation design of *Serat Wedhatama* learning based scientific approach.

Within the framework of achieving the research objectives, the text of the text *Serat Wedhatama* which contains songs (*tembang*) is analyzed substantively in the character values of the nation. *Serat Wedhatama's* text which consists of five group songs (*pupuh*) covering one hundred stanza (*pada*). The verses in each verse are analyzed by the dominant value, which is the unity of the values in the verse. Furthermore, these values are inventoried, and are classified according to character values categories, then accumulated and assimilated. These steps can be described as follows.

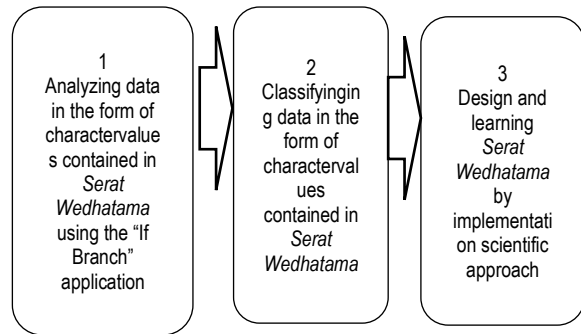


Fig.1. Data analysis steps

III. RESULTS AND DISCUSSION

3.1 "If Branched" Implementation in Identifying Serat Wedhatama Character Values

The implementation of the if branch formula to identify character values in *Serat Wedhatama* is carried out through five stages: (1) compiling a description of the character values in the format of if branch; (2) categorization of character values; (3) internalizing categories into the "if branch" formula; (4) analysis of character values in "if branch"; and (5) classification of character values contained in one hundred stanzas in *Serat Wedhatama*.

By using the If Branch application it was found 181 character values which included religious 52 (29%), honest 13 (7%), tolerance 1 (1%), discipline 10 (6%), hard work 48 (27%), independent 2 (1%), democracy 8 (4%), respect for achievement 6 (3%), communicative 18 (10%), love for peace 3 (2%), love to read 7 (4%), and responsibility 13 (7%). These results can be seen in the following table 1.

Table 1. Character values in Serat Wedhatama

Character Values	Count	Percentaze
Religious	52	29
Honest	13	7
Tolerance	1	1
Dicipline	10	6
Hard work	48	27
Independent	2	1
Democracy	8	4
Respect for achievement	6	3
Communicative	18	10
Love for peace	3	2
Love to read	7	4
responsibility	13	7

3.2 Design of Learning on Serat Wedhatama Based Scientific Approach

The scientific learning approach includes the activities of observing, asking, analyzing, trying, and forming networks or communicating. The design that can be implemented in *Serat Wedhatama* learning is through the following steps. First, students are guided to listen to the poetry of the

macapat song while reading the text of the song. Second, giving students the opportunity to question words or things that are not yet known. Third, students are guided to analyze the characteristics of the *pupuh tembang macapat* in *Serat Wedhatama*. For example; in *pupuh Pangkur* consists of how many stanzas (*tembang*); each verse consists of how many lines (*gatra*); each line consists of what are the syllables (*guru wilangan*) and what are the prayers (*guru lagu*); and other characteristics. Fourth, students are guided to compose a type of *tembang* (*Pangkur, Sinom, Pocung, Gambuh, Kinanthi*), based on the characteristics (*guru gatra, guru wilangan, and guru lagu*). Fifth, students are guided to communicate the results of their work (*tembang*) by singing it in front of the class or writing it beautifully and displayed on a display board

The description of the implementation process of the scientific approach in *Serat Wedhatama's* learning is as follows figure 2.

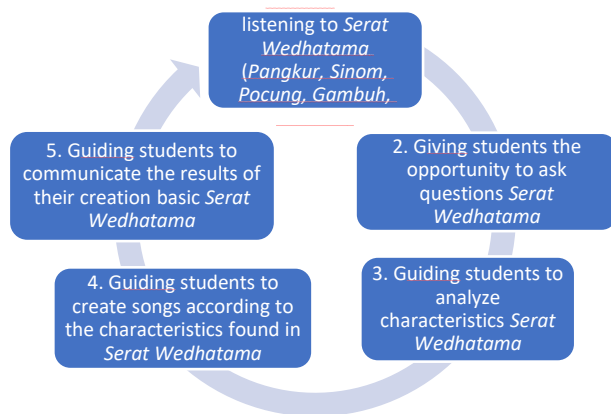


Fig. 2. Steps to Implement the Scientific Approach in *Serat Wedhatama's* Learning

IV. CONCLUSION

The conclusion of the results of the analysis and research findings can be formulated as follows. First, in *Serat Wedhatama* there are twelve types of national characters, namely religious, honest, tolerance, discipline, hard work, independence, democracy, respect for achievement, communicative, peace-loving, like reading, and responsibility. The three most character values are religious character (29%), hard work character (27%), and communicative (10%); while the lowest three characters are tolerance (1%), independent (1%), and love peace (2%). Second, the scientific approach is very appropriate to be implemented in *Serat Wedhatama's* learning. The implementation is carried out by internalizing the songs in *Serat Wedhatama* in the steps of the scientific approach.

REFERENCES

- [1] Burhanudin, Muhamad. Nilai Humanisme Religius Syiir Pesantren from *Jurnal Sastra Indonesia*, 6 (1), pp. 35-42 (2017).
- [2] Suryadi, Riza & Agus Nuryatin. Nilai Pendidikan dalam Antologi Cerpen *Senyum Karyamin Karya Ahmad Tohari* from *Seloka: Jurnal Pendidikan Bahasa dan Sastra Indonesia*, 6 (3), pp. 314-322 (2017).
- [3] Hasanah, Alif dan Hari Bakti Mardikantoro. Konstruksi Realitas Seratus Hari Pertama Pemerintahan Jokowi-Jusuf Kalla di Media Online: Analisis Wacana Kritis Model Norman Fairclough from *Seloka: Jurnal Pendidikan Bahasa dan Sastra Indonesia*, 6 (3), pp. 233-243 (2017).
- [4] Apriliyani, Nurul and Fathur Rokhman. Strategi Pilihan Bahasa Pengusaha Industri di Kecamatan Ajibarang Kabupaten Banyumas from *Seloka: Jurnal Pendidikan Bahasa dan Sastra Indonesia*, 5 (2), pp. 184-191 (2016).
- [5] Wibawa, Sutrisna. Filsafat Jawa dalam Serat Wedhatama from *Jurnal IKADBUDI*, Volume 2 Desember (2013).
- [6] Sutarno, Sutarno and Muya Barida. Kajian Bahan Bimbingan dan Konseling dalam Serat Wedhatama from *Jurnal Kajian Bimbingan dan Konseling*, 2 (3), pp. 114-122 (2017).
- [7] Pratiwi, Pradipta Christy and Yohanes Suwanto. Serat Wedhatama sebagai Salah Satu Warisan Budaya Jawa from <https://bulletin.k-pin.org/index.php>, June 13th 2018.
- [8] Apollo. Hermeneutika Serat Wedhatama Kinanthi from <https://www.kompasiana.com/balawadayu>, April 17th (2018).
- [9] Zulaeha, Ida. Innovation Models of Indonesian Learning in Multicultural Society from *Procedia – Social and Behavioral Sciences*, 103, pp. 506 – 514 (2013).
- [10] Wagiran, Dandan Supratman, Fathur Rokhman. Comprehensive Evaluation System on Bahasa Indonesia Learning Outcome from *The Journal of Education Developmen*, 3 (2), pp. 115-124 (2015).
- [11] Musadad, Akhmad Arif. Developing Multicultural Education-Based Social Studies Training Model for Teacher's Professional Competencies from *The Journal of Education Development*, 1 (1), pp. 8-14 (2013).
- [12] Chatib, Munif. *Gurunya Manusia. Cetakan VIII*. Bandung: Kaifa. (2012).
- [13] Kasali, Renald. *Let's Change Kepemimpinan, Keberanian, dan Perubahan*. Jakarta: Kompas, (2014).
- [14] Sentanu, Erbe. *Kecerdasan Rahasia Manusia Indonesia Karakter 360*. Jakarta: Kompas Gramedia. (2017).
- [15] Soengeng, A.Y. *Nilai-Nilai Pembentuk Karakter dalam Cerita Wayang Purwa*. Yogyakarta: Magnum Pustaka Utama (2016).
- [16] Pusat Kurikulum. *Pengembangan Pendidikan Budaya dan Karakter Bangsa, Pedoman Sekolah*. Jakarta: Badan Penelitian dan Pengembangan, Kementerian Pendidikan Nasional (2010).