




Status of Security as Aftermath of Conflict: A Case Study from Bankua District, West Bengal

Sanchita Roy¹  Subhendu Chel² 

Debaprasad Sarkar³ 

¹ Faculty, Dept. of Economics, Barrackpore Rastraguru Surendranath College, Kolkata, West Bengal, India

² Assistant Professor, Dept. of Economics, Barrackpore Rastraguru Surendranath College, Kolkata, West Bengal, India

³ Associate Professor, Dept. of Economics, Barrackpore Rastraguru Surendranath College, Kolkata, West Bengal, India

roy.sanchital612@gmail.com

Abstract. This paper address the Sense of Security of the people leaving in Left Wing Extremist affected *Jangalmahal* of West Bengal. Ranibandh block of Bankura district has been under the insurgence of armed conflict especially between the time period of 2000 to 2010. The comparison of sense of security and that of socio economic factors has been made for the people residing at partially and fully affected conflicting area of Bankura district. Descriptive study and regression analysis have done to understand the current scenario of the people of studied area. The study based on primary survey revealed that many family members were died/killed, murdered or kidnapped during the time of insurgency. This has created a long-term effect on their socio-economic standard of life in Jangalmahal. The loss of job, change of occupation, under-education etc. are common among affected people. Although it has realized that different developmental initiation at the core and fully affected area has made strongly sensitive in terms of the Sense of Security of the people in current scenario, but personal security like job security, food security etc. is still lagging behind for the people residing in fully affected area.

Keywords: Sense of Security, Displacement, Social Conflict, Left Wing Extremism.

1 Introduction

Left-Wing Extremism (LWE) remains one of the most significant internal security challenges in India for decades. The era of Left-Wing Extremism (LWE) has witnessed a long history of violence, killings, forced displacement, and inhumane treatment of people since 1967 [1]. Naxalism had started as an agrarian rebellion by the Santhaltribals

of Naxalbari in West Bengal in the year 1967 [2]. The violation spreads nearly 90 districts in nine states since then the movement started and gradually spread more [3]. As per [2] LWE affects up to 232 districts, with around 60 in states like Chhattisgarh, Jharkhand, Bihar, Andhra Pradesh, Odisha, and Maharashtra experiencing severe insurgency. A larger percentage of tribal populated districts, characterized by dense forest area coverage, are affected by Left Wing Extremist movement. The tribal societies inhabit India's poorest and least developed jungle regions and paradoxically most of these areas are mineral rich economic zone. This rises in the spread of Left-Wing Extremist in the tribal zones of India [2]. The roots of the Naxalite movement in India lie in the systemic neglect and economic exploitation and exclusion of marginalized groups, particularly tribal communities from the social, political, economic, and educational life of mainstream society [4]. The state's appropriation of tribal land and the extraction of valuable mineral resources from tribal territories, largely benefiting the corporate sector, fuelled up the violence against state [4]. This might be one of the main causes of the rise in the spread of Left Wing Extremists in the tribal zones of India [2].

Work of [3] mentioned the areas of red-corridor in India. People living in the area of red-corridor, their life situation in present time after long term life-threatening situation has been overlooked even after stable situation at those places. There exist almost no reliable official statistics specifically focussing on these issues due to difficulties in collection of data. This is definitely an important aspect to be addressed.

In this aspect, Human Security (HS) is one of the important dimensions of the developmental discussion of society. United Nations Development Programme (UNDP), [5] first mentioned Human security (HS) in 1994 as a part of a holistic human development paradigm. Different literature argued that, at the same time, human development is difficult to achieve when the minimum conditions for human security do not exist [6], [7], [8]. It has been argued [9] that human security and human development are distinct but complementary, where Human security is the effects and development is the processes.

2 Objective

The objective of this paper is to understand the sense of security after facing the consequences of long term insurgency by Left-Wing Extremist at Ranibandh Block, Bankura, West Bengal.

3 Data

This work is based on primary survey data work and field visit. The paper address the current situation of the people staying in the area of long term conflict, approximately more than a decade, particularly due to Left-Wing Extremist Movement in west Bengal. Survey has been done at Ranibandh Block, Bankura district of West Bengal. This area has been the central point of the total Jungalmahal area and the epicentre of the Left-Wing insurgency across highly affected districts of West Bengal like Purulia, Bankura

and West-Midnapur. In West Bengal, the situation has come under control after the killing of Maoist politburo member MallojulaKoteswara Rao aka Kishanji, on November 24, 2011, by Security Forces (SFs) [6]. Violation has been controlled in West Bengal, after 2011 [10]. People leaving this area have been facing a long term tragic impact on their daily life and socio-economic situation.

4 Methodology

To address the objective of the study a detailed descriptive analysis has done for the factors of Sense of Security. Sense of security is basically an index combining nine factors of security mentioned in Figure-1. The Sense of Security index is a modified version of Human Security (HS)[10] mentioned at Human development report 1994. The index has constructed by combining the factors of security using Principal Component Analysis [11]. To understand how socio-economic conditions are affecting their Sense of Security, a regression analysis has done using Ordinary Least Square Method (OLS).

The whole surveyed area has been clustered into fully affected and partial affected area by collecting information from block office.

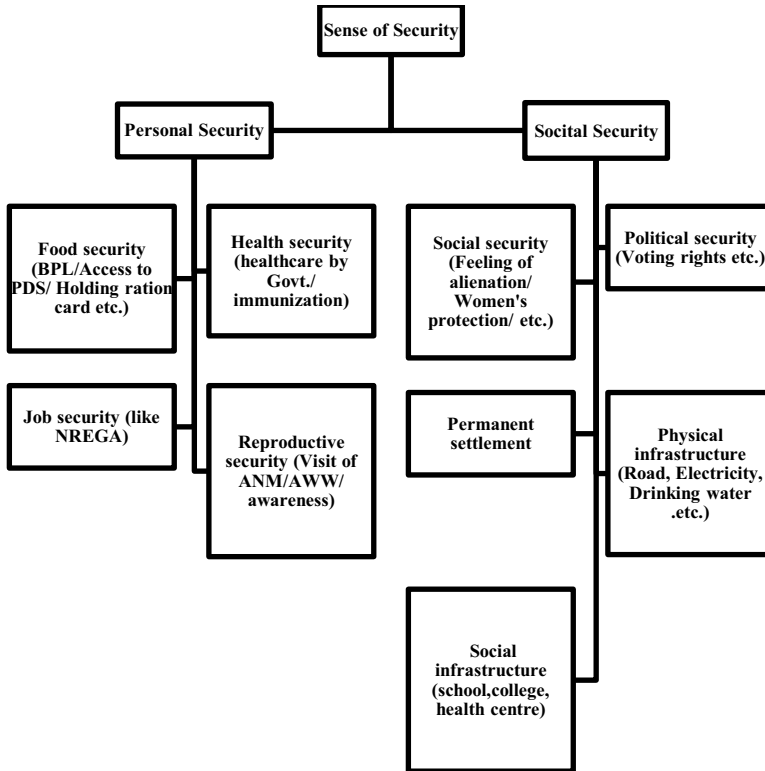


Map. 1. Ranibandh Block Map and Selected Study (Drawn by Authors)

5 Variables

5.1 Dependent Variable

The dependent variable is Sense of Security Index (SSI) constructed by combining factors of security (Fig. 1) using Principal Component analysis.



5.2 Independent Variable

Very important Socio-Economic factors have been considered as independent variables.

- Displaced at the time of conflict or not (Di)
- Per capita monthly consumption (Ci)
- Electricity (Ei)
- Safe drinking water (Wi)
- Type of toilet (Ti)
- Type of house (Hi)
- Change of occupation since conflict (OCi)
- Benefit Received from Physical loss of family (BRi)
- New public infrastructure construction (PIi)

6 Result and Discussion

The analysis starts with factors of Sense of Security. Table-1 shows the percentage response on Sense of security at affected area.

As per the response of the people living in fully-affected and partial-affected people, fully-affected people are in worse situation compared to partial-affected people. In present situation, nearly 60 per cent people from fully affected area felt insecure on their food arrangement. The people of fully affected area, almost 38 per cent households reported poor or very poor condition in job security. In contrast, almost 45 per cent household from partial-affected area, felt that the job is adequately or more than adequately secure. Fully affected area is in worse off position in all the four aspects of personal security, comparison with partial affected area. Sense of security in social engagement poor at fully affected area due to the fear from past experience. It has been noticed that the Sense of security on Physical and social infrastructure in fully-affected area is high compared to partial affected area. The road construction, electricity and drinking water supply etc. are responded as adequate and more than adequate available by 48 per cent household at fully-affected area. In the fully affected area, the development and re-build of public school, college and healthcare units have done. Some developmental investment like road construction, fresh water supply, medical facilities has improved in fully-affected area. This has increased the sense of security in social infrastructure among the household of fully-affected area.

Table 1. Present Scenario of Sense of Security at Partial and Fully Affected Area

Sense of Personal Security (% Response)						
		More than adequate	Adequate	Moderately adequate	Poor	Very Poor
Food Security	FA	11.06	17.59	13.57	19.60	38.19
	PA	10.59	28.24	31.76	11.76	17.65
Health security	FA	16.58	18.59	28.14	25.63	11.06
	PA	17.65	30.59	24.71	23.53	3.53
Job security	FA	27.64	15.58	12.06	22.61	15.08
	PA	44.71	27.06	12.94	10.59	4.71
Reproductive security	FA	13.07	25.13	25.13	29.15	7.54
	PA	12.94	34.12	24.71	20.00	8.24
Sense of Societal Security (% Response)						
		More than adequate	Adequate	Moderately adequate	Poor	Very Poor
Social engagement	FA	19.60	14.07	18.59	29.65	18.09
	PA	27.06	17.65	30.59	10.59	14.12
Political security	FA	17.09	15.08	22.11	28.14	17.59
	PA	24.71	27.06	21.18	18.82	8.24
Permanent settlement	FA	18.09	19.10	24.12	26.63	10.05
	PA	29.41	31.76	18.82	10.59	8.24
Physical infrastructure	FA	22.11	26.63	26.63	21.61	3.02
	PA	17.65	28.24	22.35	23.53	8.24

Social infra-structure	FA	30.15	17.59	30.65	18.09	3.52
	PA	5.88	35.29	34.12	14.12	9.41

Source: Calculated by author from Primary Survey data (*FA- Fully Affected Area, PA- Partial Affected Area)

In the next section, a descriptive study has analysed on Sense of Security Index. Sense of Security Index is combined score of all the factors discussed above and have constructed using the factors of Principal Component Analysis.

Table 2. Descriptive Statistics

	Full Affected	Partial Affected
Mean	1.02	0.76
Median	1.03	0.71
Mode	0.00	0.26
Skewness	-0.16	0.42
Kurtosis	-1.18	-0.67
Maximum	2.16	1.74
Minimum	-0.01	0.00
SD	0.59	0.44

Source: Calculated by author from Primary Survey data

Table-2 shows the data description tools of Sense of security index. The average Sense of security is high in fully-affected area, but high Standard Deviation and negative skewness proves that most of people blogs to lower Sense of security section of data set.

Now in the next section a regression analysis has done to find out the significant dependant Socio-economic factors on Sense of Security. Equation (1) and Equation (2) shows the regression on Sense of security with respect to important socio Economic factors.

Regress equation of Sense of Security with respect to socio-economic factors at Fully affected area

$$\begin{aligned}
 SSI_{fa} = & 0.082 + 0.077_{(1.03)} * D_i - 0.018_{(-0.17)} * E_i + 0.196_{(2.38)} * W_i \\
 & + 0.045_{(1.41)} * H_i + 0.08_{(3.46)} * T_i + 0.143_{(1.72)} * OC_i \\
 & + 0.263_{(3.62)} * BR_i + 0.284_{(3.79)} * PI_i \\
 & + 0.000092_{(2.22)} * C_i + \epsilon_i
 \end{aligned}
 \tag{1}$$

Regress equation of Sense of Security with respect to socio-economic factors at partial affected area

$$\begin{aligned}
 SSI_{pa} = & 0.23 + 0.206_{(1.52)} * D_i + 0.24_{(1.64)} * E_i - 0.06_{(-0.39)} * W_i \\
 & - 0.015_{(-0.48)} * H_i + 0.077_{(2.38)} * T_i - 0.085_{(-0.78)} * OC_i \\
 & - 0.032_{(-0.33)} * BR_i + 0.318_{(3.12)} * PI_i + 0.000026_{(0.71)} * C_i \\
 & + \epsilon_i
 \end{aligned}
 \tag{2}$$

From equation (1) it can be seen that, at fully affected area, per capita consumption expenditure (C_i), clean water supply (W_i), availability of toilet facility (T_i), Change of Occupation (OC_i), Benefit Received from Physical loss of family (BR_i) and New Public Infrastructure (PI_i) all these factors have significant impact on Sense of Security. In contrary, the socio-economic factors that significantly influence sense of security at partial affected area are Type of toilet use and New public infrastructural constriction. There is huge negative perception in the partial affected area in terms of the influencing factors of sense of security in some cases, which happens due to the fact that most of the developmental initiative have been taken place in full swing in the fully-affected area as Left Wing extremist have made a serious devastation on several government-run physical infrastructure. Where as in the partial affected area, already existed infrastructure had not demolished in the time of insurgency. The overall regression analysis shows that socio-economic factors have significant role sense of security at conflicting area of Ranibandh, Bankura district.

7 Conclusion

This paper discusses current sense of security of the people leave in the Naxalite–Maoist affected area. A comparison has been made between fully affect area and partial affected area. The people of Ranibandh, Bankura has been affect by the Maoist activist for more than a decade. A larger population of people of this block were forced or integrated to be a part of Left Wing Extremist Movement or Naxalite–Maoist insurgency. Between year 2000 to 2010, civil conflict increased and the situation became worse in the area. This hampered the Socio-Economic life of the people leaving in that area.

The consequence of long term insurgency and illiteracy, job loss, murder or kidnapping of family members has long term effect on the people on their socio-economic life. In current scenario, although different plans and policies are being taken to bring them back to the main stream of livelihood, but the fear of loss is still a nightmare to them. The loss of job, change of occupation, under education all these are common in the people of affected area. At present situation, personal security, like security related to job, health, education etc. are more important to the households than social security, especially at fully-affected area. Socio-economic condition of the household of fully-affected area is very poor compare to partial-affected household. The job security is high in partial-affected area compare to fully affected rea. But public infrastructure developments at fully-affected area have a significant impact on the improvement of sense of Security among people leaving in fully affected area.

Acknowledgments. The paper is a part of work under College Funded Minor Research Project, sponsored by Barrackpore Rastraguru Surendranath College. Authors are grateful to the college authority for the financial support. The stated facts and opinion and conclusion reached are entirely the responsibility of the author and not of the funding authority.

References

1. Y. Chandra,: The Violations of Human Rights by Left-Wing Extremist (LWE) Groups: An Overlooked Challenge, *Journal of Human Rights Law and Practice*, 2(1), pp. 48-62. (2019)
2. G. D. Bakshi,: *Left Wing Extremism in India: Context, Implications and Response Options*. Manekshaw Paper, (9). New Delhi, KW Publishers Pvt Ltd. (2009)
3. R.Garge,: *Security and Development: An appraisal of Red Corridor*: Civekanda International Foundation, (January 2019).
4. P. Sarkar,: *Left-Wing Extremism and Tribal Marginalization in India: Assessing the Socio-Economic Challenges and Security Concerns*, *RESEARCH REVIEW International Journal of Multidisciplinary*, 10(2), pp. 126-135, (2025).
5. UNDP, U. (1994).: *Human development report 1994: New dimensions of human security*, New York, Retrieved December, 12, (2022).
6. B. R. Jolly, D. B. Ray,: *NHDR Occasional Paper 5*, Nafional Human Development Report Office, (2006).
7. R.Jolly, D. B. Ray, *Human security—National perspectives and global agendas: Insights from national human development reports*, *Journal of International Development: The Journal of the Development Studies Association*, 19(4), pp. 457-472, (2007).
8. C. Thomas,: *Global governance, development and human security: exploring the links*, *Third World Quarterly*, 22(2), pp. 159-175, (2001)
9. J. Busumtwi-Sam,: *Contextualizing human security: A ‘deprivation–vulnerability’ approach*, *Policy and Society*, 27(1), pp. 15-28, (2008).
10. S. Roy, S. Chel, d. sarkar,: *Internal Displacement Due to Conflict: A study from Bankura, West Bengal*, *Journal of Business and Economic Issues*, ISSN 0974-9144, Vol. 13 Number 1, pp. 26-48, (2023).
11. S. Roy, S. Chel, d. Sarkar,: *Sense of Security: Aftermath of Extreme Left Insurgency and Conflict in Bankura District*, *TIJER- International Research Journal*, ISSN 2349-9249, Volume 12, Issue 6, pp. c278-c285, June 2025.

Open Access This chapter is licensed under the terms of the Creative Commons Attribution-NonCommercial 4.0 International License (<http://creativecommons.org/licenses/by-nc/4.0/>), which permits any noncommercial use, sharing, adaptation, distribution and reproduction in any medium or format, as long as you give appropriate credit to the original author(s) and the source, provide a link to the Creative Commons license and indicate if changes were made.

The images or other third party material in this chapter are included in the chapter's Creative Commons license, unless indicated otherwise in a credit line to the material. If material is not included in the chapter's Creative Commons license and your intended use is not permitted by statutory regulation or exceeds the permitted use, you will need to obtain permission directly from the copyright holder.

