

# The Study of English Learning Community in Network Based on SNS

LI Meijing<sup>1, a</sup>

<sup>1</sup>Ji Lin Business and Technology College, Changchun 130000, China

<sup>a</sup>limeijing@163.com

**Keywords:** English Learning Community; SNS; Social Constructivism Learning Theory

**Abstract.** The SNS has become one of the most popular application on Internet, and has been extended to the field of knowledge sharing, gradually penetrated into marketing, interpersonal communication, medical, library management, the field of education. This research starting from the research status quo of network learning community, the network learning community, and generalizes the relevant theories of SNS, with six degrees of segmentation theory, social constructivism learning theory, and the theory of distributed cognition theory, group dynamics theory as the foundation, using a variety of methods, build the English online learning community theory model based on SNS, combined with the corresponding technical, preliminary build English online learning community based on SNS.

## Introduction

With the rapid development of the world, the progress of science and technology, interpersonal, communication between countries more frequently, using language to communicate with people to become one of the necessary skills, English is the main language of the world today, has a very important role in communication with others, learning English well is very important in today's society [1]. But the impact of examination-oriented education, nowadays our country's English level is not high. The traditional English teaching cannot well meet the demand of students' learning, and the use of online learning communities to promote English learning has many advantages, students can choose according to interest in online learning community learning content, search information and communicate with other learners, etc. But the authenticity of existing network learning community in the learners' interaction and collaboration between learners, the formation of community culture and learner's identity belonging to community problems.

SNS (Social Network Service) by a very short time, popular in the world, the current SNS site incorporates Blog, Podcast, Wiki, and a series of characteristics and advantages, become a collection of text, audio and video for an integrated media, Social networks at the same time reducing the interpersonal communication of the characteristics of the multidirectional interaction and feedback [2]. SNS potential application in the education is mainly manifested in to construct the network learning community provides a good technical and environmental support, SNS provides application platform, can be very good to show themselves, can also build personal private network, with friends, classmates, or interested in strangers into personal network social circle, as communication and interaction, and establish good social relationships. SNS have the function of knowledge sharing, provides the knowledge sharing technology environment.

## The basic model of network learning community based on SNS

The definition of SNS has a lot of, often people will be understood as a social network service, is a designed to help people build social network of Internet application services. This service is based on the Internet, through a specific website, software to people [3-4]. So, in the field of Internet, SNS has three layers of meaning, Social Network Service), Social Network Sites and Social Network Software). As shown in figure 1, based on the Social Network basic structure unit of learning community, members from self-demand, follow the norms and constraints in the community, with any other member can through establishing interactive information flow problems, resources and

activities, and these problems, resources and activities can attract more members to join, to form to continuously expand and extend the Network learning community [5].

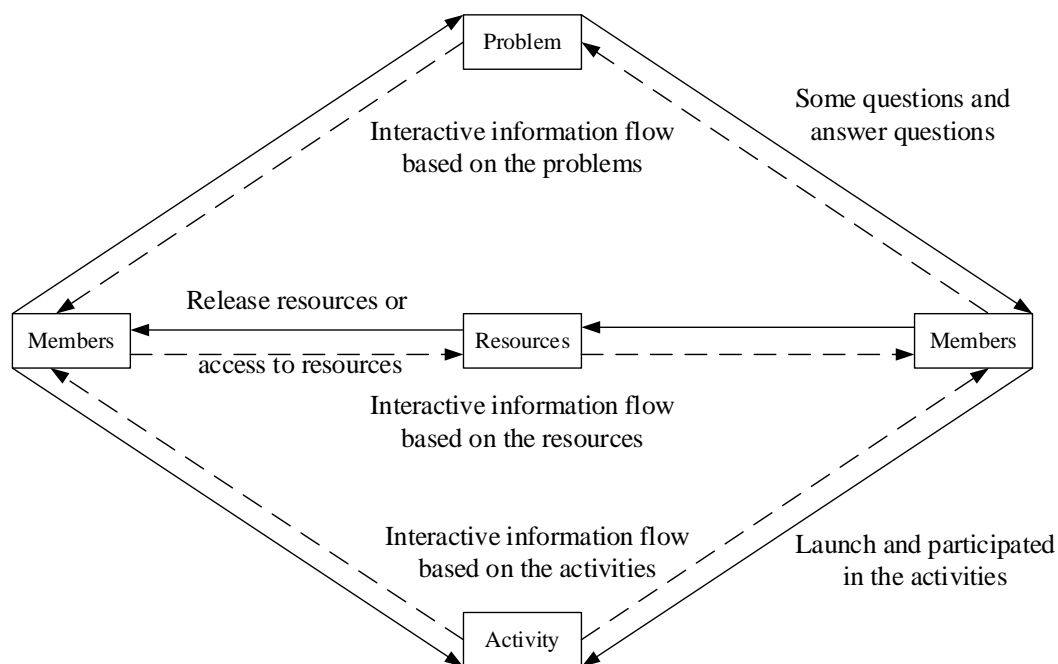


Figure 1. The basic model of network learning community based on SNS

Traditional network platform to build learning community members usually lack of personalized support, study discussion and communication between members is around a single problem or resource, unable to truly become the main body in the learning community members itself, more difficult to develop learning community network. Based on social network learning community can really establish a member as the main body of learning network.

### Function module design of network English learning community based on SNS

Based on SNS network English learning platform is an open, shared, build the network platform, it set up different permissions according to different requirements of users. Site consists of teachers, students, parents, three kinds of users, students can manage their own personal home page, including published Micro Blog, upload (sounds, pictures, documents), manage their own learning materials and so on. Teachers can upload homework, alerts, teaching materials, etc., can communicate with other teachers, communication with students at the same time, participate in student assessment, etc., the administrator is mainly responsible for user management, document management, evaluation and so on. Based on the characteristics of SNS, any students and teachers can upload or download documents on network platform, can evaluate the learning materials, at the same time can communicate with any students into the platform. Learners can also set up their own learning files, implement the management of their learning materials, is conducive to the students' autonomous learning. Through analyzing the demand of the system. This online learning community based on SNS English adopts three layer architecture model, as shown in figure 2.

**Web presentation layer.** Show the outermost layer is the system, it provides users with various functions of operation interface, send the request to the logic layer through a unified interface, and receiving results through a unified interface.

**Business logic layer.** Logic layer is the middle tier of the system, and it will show layer after the request in accordance with the requirements for handling into the database, the database data to add, modify, or Chad, and finally in return show floor.

**Data layer.** It is the bottom of the system, and it provides all data storage and operation system, the system database is used by SQL server.

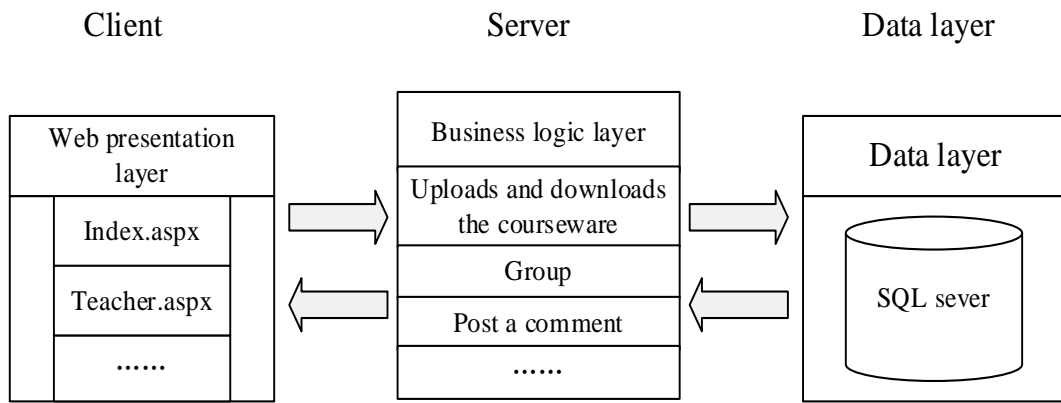


Figure 2. Function module of network English learning community based on SNS

### The building of English learning community in network model based on SNS

Based on the above analysis, based on social constructivism theory, the theory of correlation, the SNS can provide effective integration of learning services, from the perspective of network learning process of students, following the principle of the theory mentioned in section ii of this chapter, the building model is shown in figure 3.

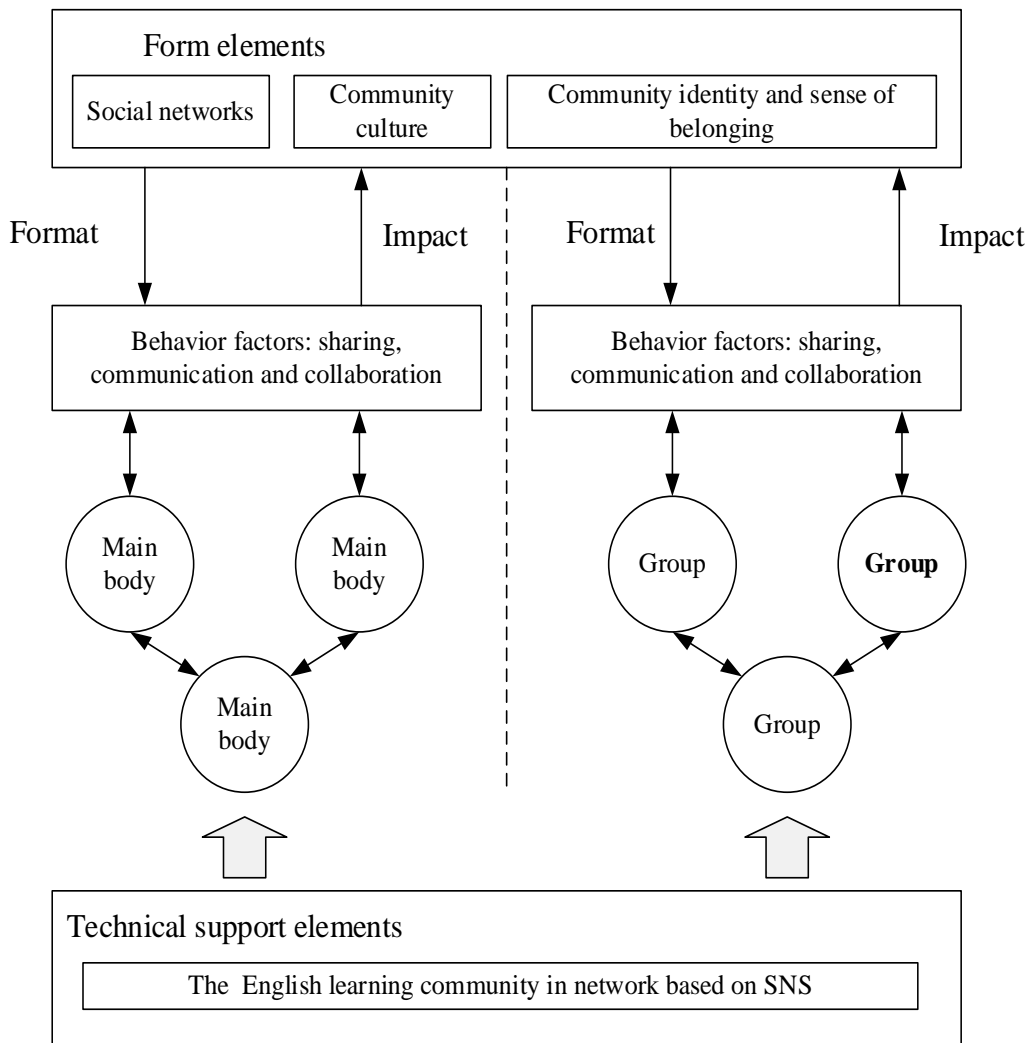


Figure 3. The English learning community in network model based on SNS

Figure 3 can be seen that the components of network learning community based on SNS package as follows: the main elements, object elements, technical support, and behavior factors. Around the learners as the center is divided into two cases:

Individual learners as the main body, based on social network learning community support platform as the main body to provide a powerful service functions, to provide support for the object elements, object elements mainly refers to the learning resource, information flow, etc., main factors in the autonomous learning is largely through the interaction with these resources and acquire knowledge. Based on social network learning community support platform and social support learners more convenient management, expand your social relationship, allows the learner to get what you want from more peers resources or information.

Individual learners and study group as the main body, the learners in the use of network learning community for learning, can according to interest, common topic or area form a small group. A member of the SNS platform can support any activity or organization is a topic by community. Learners within the group will also have different emotional experience, formed a cultural atmosphere, elements constitute the formation of the network learning community.

## **Conclusion**

The SNS can provide support for network learning community. In order to adapt to the development of The Times, the new curriculum requirements, as well as the change of teaching environment, makes English learning to achieve better effect, change the traditional way of teaching, give students a new way to learn, to solve the existing network learning community in the lack of interactivity, sharing, etc., this study try to build a model of online learning community based on SNS, and building online learning community platform to solve the main problems existing in English teaching and learning. Based on social network learning community for students to provide a good use of the Internet habit environment, to provide a new way and the way to learn English.

## **References**

- [1] Harrison R, Thomas M: International Journal of Emerging Technologies and Society, 2009, 7(2): 109-124.
- [2] Ellison N B: Journal of Computer - Mediated Communication, 2007, 13(1): 210-230.
- [3] Griffith S, Liyanage L. An introduction to the potential of social networking sites in education[C]//Emerging Technologies Conference 2008. 2008: 9.
- [4] Matsuo Y, Mori J, Hamasaki M: Web Semantics: Science, Services and Agents on the World Wide Web, 2007, 5(4): 262-278.
- [5] Arnold N, Paulus T: The Internet and Higher Education, 2010, 13(4): 188-196.