

A Model for Replacing the Kaliba Dam Based on Multi-dam System

Yajie Xu

School of North China Electric Power University, Baoding 071003, China

Yajie_Ncepu@163.com

Abstract: Considering the Kariba Dam's current dangerous situation, our team primarily analyses the three available options, and then explores the effect from a system of dams to the Zambezi River. A Dam Site Selection Model (DSSM) is established by constructing two initial sub-models named Basic Location Model (BLM) and Optimized Addressing Model (OAM) respectively. In BLM, based on the principle of building dams at densely packed contours, we get a series of contour by Global Mapper and determine 25 original locations. In OAM, based on overall water management capabilities which framed by reservoir capacity and Dam Cost Equation which founded by Dam Geometries Equation, the position of the dam is a variable, by 0-1 Integer Programming, our team acquire the position coordinates of 15 dams.

Keywords: Kariba Dam ; A system of dams; 0-1 Integer Programming;

1. Introduction

Dams are used to control and distribute natural surface water and groundwater. It can provide flood control capacity, can irrigation in the dry season. Obviously, Kariba Dam burdens these functions. In addition, the existing Kaliba dam has a large storage capacity. A 2015 report by the Institute of Risk Management of South Africa included a warning that the dam is in dire need of maintenance. So we're going to removing the Kariba Dam and replacing it with a series of ten to twenty smaller dams along the Zambezi River.



Fig.1 The Kariba Dam^[2]

2. Dam Site Selection Model

2.1 Dam Geometries Equation

Most of the Zambezi River channel cut through the sandstone layer, and part of the river cut through the basalt layer. The river bed of the Zambezi River is complex. It is not easy to model and solve later. So, we assume that the river cross-section is approximately rectangular.

The length of the cross-section of the channel at the i -th alternative point downstream of the Kaliba dam is x_i , and the water depth is y_i . Then the cross-sectional area of the river here as:

$$.S_i = X_i \times Y_i \quad (1)$$

Meanwhile, on the assumption that the unit time passing through any cross-sectional area of the Zambezi water flow rate same. So, you can be selected within the watershed of any cross-sectional area equal to two places. That is to say: $S_i = S$. Cross-section of the dam can be seen as a trapezoidal, shown in Fig. 2.

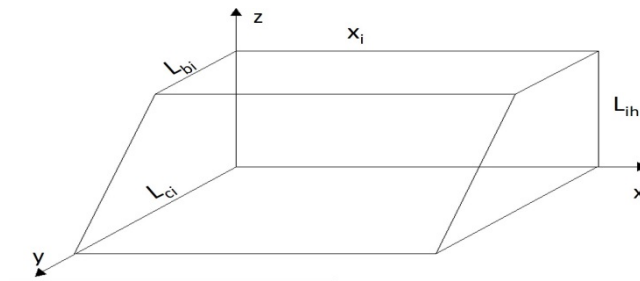


Fig.2: Schematic diagram on the dam

The trapezoidal upper and lower widths are L_{bi} and L_{ci} , height as L_{hi} , then the volume of the dam is defined as:

$$V = x_i \frac{(L_{bi} + L_{ci})L_{hi}}{2} \quad (2)$$

To simplify the model, we assume that k_b and k_c are fixed. It is assumed that in the normal water cycle, the water level is proportional to the height of the dam. The water level of the alternative dam is proportional to the height of the dam. The height of each alternative dam is y_i . The dam height required for the unit water level is γ . Therefore, the height of each dam is defined as:

$$L_{hi} = \gamma y_i \quad (3)$$

2.2 Dam Cost Equation

Dam costs are associated with a number of factors, and a variety of materials are used in the construction of the dam. In order to facilitate the solution, so here we only consider the use of building materials are mixed uniformly, Where β represents the price per unit volume of building materials, and the cost of constructing the dam group is:

$$C_i = \beta V. \quad (4)$$

2.3 Dam Location Selection Basis

Since the dams we are going to build have the same water management capabilities as the original Kaliba Dam, that is to say, The new dams will not affect the ability of the lower reaches of the Zambezi to transport, irrigate and prevent floods and droughts. We decided to build a new dam system near the original Kaliba Dam. Taking

into account the Kaliba dam upstream is Kaliba, unable to build dams, So the Kaliba dam and the downstream river construction of new multiple dam system. We use the Global Mapper software to map contours near the Kaliba dam on the Zambezi River, choose the place where the terrain gap is larger, that is, in the contour line-intensive local site to build the dam. Through analysis, as shown in the scatter

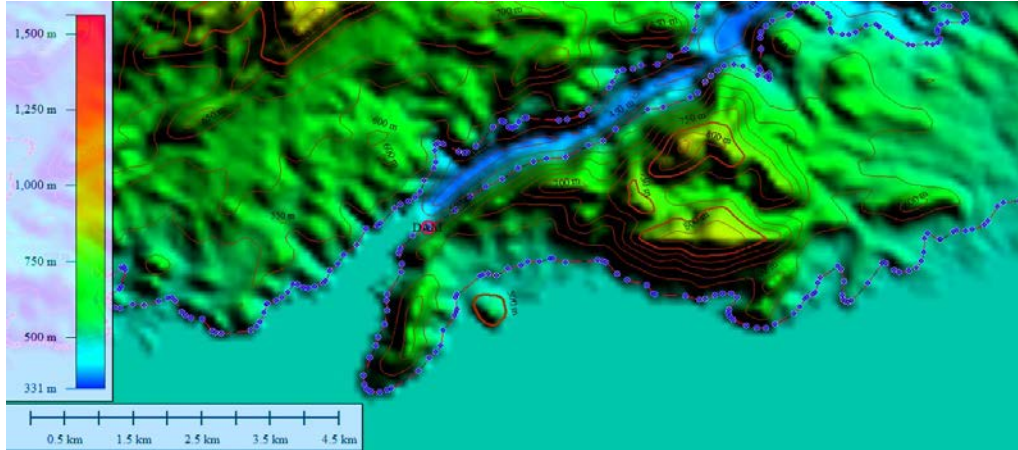


diagram.

Fig.3 Contour map(near the Kaliba dam)

These points is the next possible construction of the dam, that is, alternative addresses. We use the information in the map to calculate the river width x_i ($i = 1, 2, \dots, 25$) in the area where the 25 candidate points are located.

0-1 Integer Programming Model (Optimized Addressing Model)

We use the variable D_i to denote whether the i -th alternative address creates a dam[4]. $D_i = 0$, if the i dam is established; $D_i = 1$, if the i dam isn't established.

Our task is to choose the right location, in these locations to build 10 – 20 dams, so:

$$10 \leq \sum_{i=1}^m D_i \leq 20 \tag{5}$$

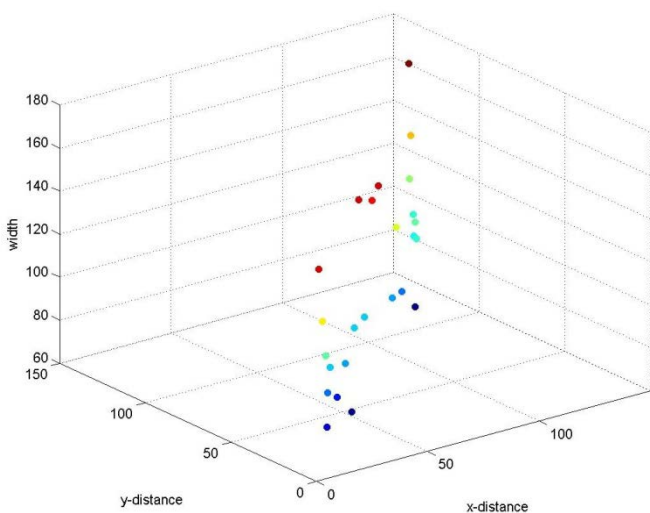


Fig.4: Three-dimensional scatterplot for site selection

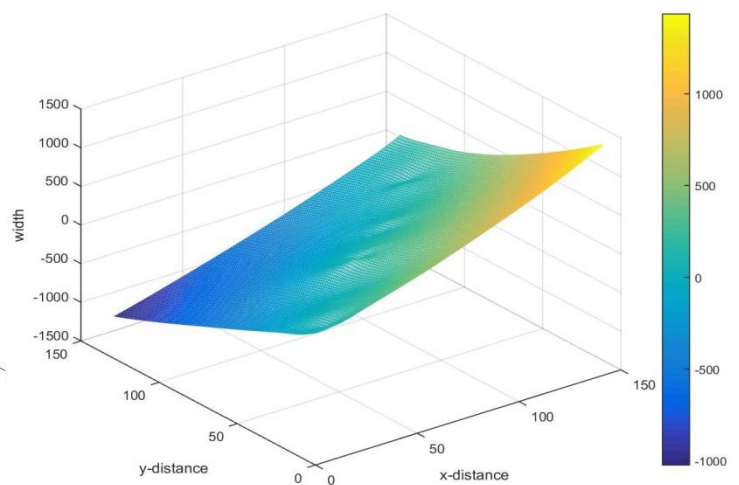


Fig.5: River width three-dimensional surface map

The new dam system is intended to replace the existing Kaliba dam, so the new dam group should have the same capacity as the current Kaliba dam, or even better water

management capacity, so the new dam group total Of the water level must be met :

$$\sum_{i=1}^n \Delta y_i \geq H_c \tag{6}$$

According to the above formula, we can find the construction cost equation of the dam.

$$C_i = \beta S \frac{(k_b + k_c)^2}{2} y_i \tag{7}$$

3.conclusion

Using the above constraint function, the objective function is minimized by using lingo software, and the result is obtained: To obtain the points as shown in the figure 6, which represent the number and location of the subsequent construction of the dams.



Fig.6 Dam specific location

Table 1: Dam location and river width

Number	1	2	3	4	5
x-distance/km	3.4783	10.0000	16.5217	27.8261	40.0000
y-distance/km	3.0435	7.3913	14.7826	23.9130	31.3043
river width	156.5217	113.0435	91.3043	82.6087	69.5652
Number	6	7	8	9	10
x-distance/km	52.1739	61.7391	71.3043	86.9565	99.1304
y-distance/km	45.6522	52.1739	56.5217	68.6957	79.1304
river width	100.0000	100.0000	156.5217	95.6522	91.3043
Number	11	12	13	14	15
x-distance/km	113.0435	116.9565	119.5652	136.0870	143.4783
y-distance/km	88.6957	94.3478	98.6957	122.6087	132.6087
river width	108.6957	113.0435	104.3478	117.3913	165.2174

4. References

[1]The Humanistic Environmentb of Zambezi River| baidu.
<https://www.baidu.com/baidu.com/2012/03/19/ZambeziRiver/>

[2] Wenyi Zhang .Study on optimal operation of long - term power generation of Wujiang cascade hydropower station [D]. Xian: Xian University of Technology,2006.

[3] Huitao Zheng . Study and application of parallel solving method for optimal operation of

hydropower station group [D]. Wuhan: Wuhan University, 2013.