

A Model to Analyze the Design of the Toll Plaza

Ran Huang

Department of Economics & Management, North China Electricity Power University, Baoding
071000, China

18331137016@163.com

Keywords: design of barrier toll fan-in area, traffic congestion, cellular automaton, analytic hierarchy process.

Abstract. This paper focuses on the improvement of the toll plaza design, in order to solve the traffic congestion problem. In order to analyze the performance of the construction plan we define an evaluation index decided by the main issues in this model which are accident prevention, throughput and cost. We apply cellular-automaton approach and analytic hierarchy process to analyze this design. The shape, size, and merging pattern are determined by the fan-in area after the toll barrier.

1. Introduction

The development of the modern society has put forward higher request on transportation capacity. As the extension of toll roads, the design of the toll plaza has become a focus and difficulty. In this paper, we work on how to make maximum vehicles pass the area after the toll barrier safe and sound without spending too much money to construct the area.

We try to solve the problem by modeling the shape, size, and merging pattern of the area following the toll barrier in which vehicles fan in from B tollbooth egress lanes down to L lanes of traffic. In this paper, we try to design a model to determine the shape, size, and merging pattern of a basic fan-in area after the toll barrier. The solution should take accident prevention, throughput and cost into consideration.

2. Assumptions and Symbols

2.1 Assumption of the model

Same type of tollbooths matches the same constant passing time.

The number of the open tollbooths in every single day is fixed.

Vehicles in this model have the same maximum velocity while their initial velocities (the speed before the vehicle access the toll plaza) are different.

When approaching the toll plaza, driver's separate pattern depends on their initial velocities and the traffic condition, seeking to achieve the shortest travel time.

Drivers do not cooperate. While the drivers are not directly competing against one other, they are affecting each other and are hence fierce indirect obstacles/opponents.

The moving pattern of all vehicles observes the traffic rules.

There are three types of cellular: vehicle cellular, blank cellular and banned cellular (which is closed to traffic).

The size of every single cellular is same. Its length, about 5 meters, equal to the length of the car plus the safety distance, and its width equals to the width of the traffic lane, which also equals to the width of the straight lane in Zone D.

It will take the vehicle 6s to pay the tolls at the human-staffed tollbooth.

2.2 Symbols

We divided the whole area into six parts from Zone A to Zone F as shown in Figure 2.

Combined Zone B and Zone C, we defined it as the fan-out area in the toll plaza which is in front of the toll barrier. Besides, the area of the toll highway adjacent to the Zone B is defined as Zone A.

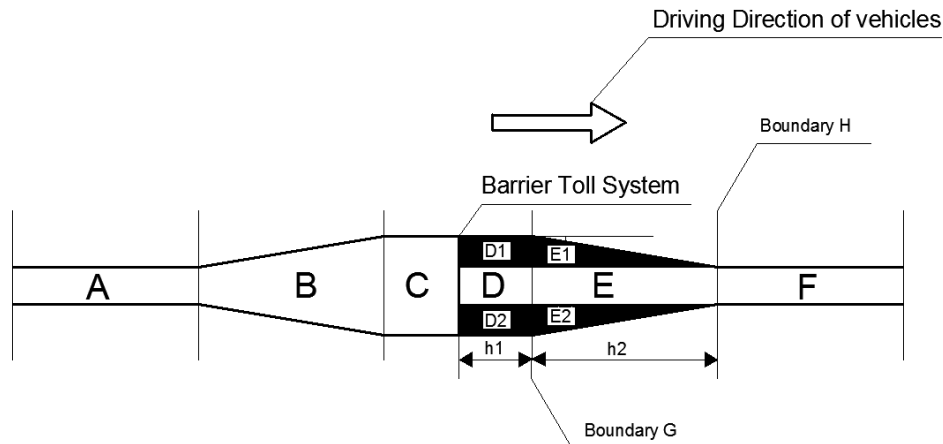


Figure 1 Sketch Map of the Toll Plaza

All the symbols used in the paper are listed as follow:

Table 1. Symbols Used In the Paper

number	symbols	definition
1	L	The quantity of the traffic lanes in each direction
2	B	The quantity of the tollbooths in each direction
3	q	The width of a traffic lanes (equal to the width of a straight lane in Zone D)
4	i	The serial number of the vehicle
5	$v(i, t)$	the velocity of the i_{th} vehicle at time t
6	$x(i, t)$	the position of the i_{th} vehicle at time t
7	$d(i, t)$	The quantity of the blank cellular between i_{th} vehicle and the nearest vehicle in front of it on the same lane at time t
8	v_{max}	maximum velocity of the vehicle under certain circumstances
9	V_{max}	Limitation maximum velocity of the road
10	$v_b(i, t)$	The velocity of the nearest vehicle which is on the neighboring lane and behind the i_{th} vehicle at time t
11	$d_f(i, t)$	The minimum quantity of the blank cellular between the i_{th} vehicle and the vehicle which is in the neighboring lane and in front of the i_{th} vehicle at time t
12	$d_b(i, t)$	The minimum quantity of the blank cellular between the i_{th} vehicle and the vehicle which is on the neighboring lane and behind the i_{th} vehicle at time t
13	p_1	The probability of lane changing in heavy traffic
14	p_2	The probability of lane changing in light traffic
15	h_{1j}	The length of j_{th} straight lane in Zone D along the direction of the road
16	h_2	The length of Zone E along the direction of the road.
17	θ	The angle between the one side edge of Zone E and the direction of the highway lane ($\theta < 90^\circ$)
18	x	$\tan \theta$
19	Y	The number of accidents happened per year
20	S	The surface area of the extra road constructed because of the build of the toll system. (The surface area of the shadowed Zone D_1, D_2, E_1, E_2)
21	N_j	The number of vehicles per hour passing the point where the end of the plaza joins the L outgoing traffic lanes under different traffic condition
22	M	The construction cost of per unit area
23	λ	The accident prevention rate

3. Model

3.1 The foundation of the model

The model will be affected by three main factors: throughput (number of the vehicles per hour passing the point where the end of the plaza joins the L outgoing lanes), accident prevention and the cost (which is related to the surface area). First, we discuss these factors respectively. Then define a comprehensive evaluation index to analyze the performance of every plan.

3.1.1 Throughout

We applied cellular-automaton approach to simulate the vehicle's moving pattern. According to the probability of vehicle occurrence in every lane, we divided the traffic condition into three types, which are heavy traffic, normal traffic and light traffic. Then we set the maximum velocity of the vehicles as 3 and the acceleration during accelerating time as 1, while the acceleration during decelerating time is unsettled. The initial velocity of the vehicles is chosen randomly from 1 to 3.

Specific driving rules are as followed:

Acceleration rule:

If $v(i, t) \leq v_{max}$

There will be $v(i, t + 1) = \min[v_{max}, v(i, t) + 1]$

Meanwhile $v_{max} \leq V_{max}$

Deceleration rule:

$v(i, t + 1) \leq \min[\frac{d(i, t)}{1}, v(i, t)]$,

Random deceleration rule:

Uncertain factors lead to the probability of the deceleration of the vehicle is P.

$0 \leq v(i, t + 1) \leq v(i, t) - 1$,

Moving rule:

$x(i, t + 1) \leq x(i, t) + v(i, t + 1) \times 1$,

Lane changing rule:

When traffic congestion happened on one lane, the vehicle could change its lane to the unblocked lane, if all the following criteria are met:

$$\left\{ \begin{array}{l} \frac{d(i, t)}{1} < \min(v_{max}, v(i, t) + 1) \\ d_f(i, t) > d(i, t) \\ d_b(i, t) > 1 + \min(v_b(i, t) + 1, v_{max}) - \min(v(i, t) + 1, v_{max}) \\ rand() < p_1 (rand() \text{ is a random number between } 0 \text{ to } 1) \end{array} \right.$$

Meanwhile, the unblocked lane should also meet all the following criteria:

$$\left\{ \begin{array}{l} \frac{d(i, t)}{1} > \max(v_{max}, v(i, t) + 1) \\ d_f(i, t) > d(i, t) \\ d_b(i, t) > v_{max} \\ rand() < p_2 (rand() \text{ is a random number between } 0 \text{ to } 1) \end{array} \right.$$

And $p_1 \gg p_2$

According to cellular-automaton approach^[4], we can calculate the throughput of different traffic conditions (heavy traffic, normal traffic and light traffic) given the values of B, L, h_1, h_2 . The values of B and L can be determined by analyzing and experience. Thus, we discuss how the values of h_1 and h_2 could affect the throughput.

The weighted average throughput can be repeat as follow:

$$N = \sum N_j t_j$$

Where:

N_1 is throughput under heavy traffic condition

N_2 is throughput under normal traffic condition

N_3 is throughput under light traffic condition

t_1 is the proportion of heavy traffic time to the whole time.

t_2 is the proportion of normal traffic time to the whole time.

t_3 is the proportion of light traffic time to the whole time.

Given

$$B = 8, L = 3$$

Applying cellular-automaton approach to simulate the vehicles moving in half an hour of the heavy traffic time, the results are shown below:

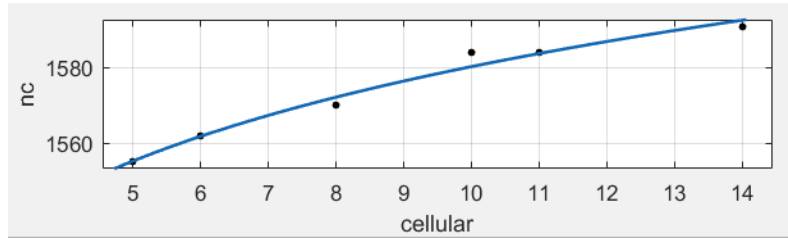


Figure 2. The relationship between **nc** and the number of cellular

Where:

cellular is the number of cellular, and the length of it is 5 meters.

nc is the half of N

After regression analysis, the specific regression model between the half hour throughout (nc) and *cellular* is showed as follow:

$$nc = 1498cellular^{0.02309}$$

$$R^2 = 0.9791$$

The model is fine for its high relevance.

Increase the vehicle density of Zone A, we can get the figure:

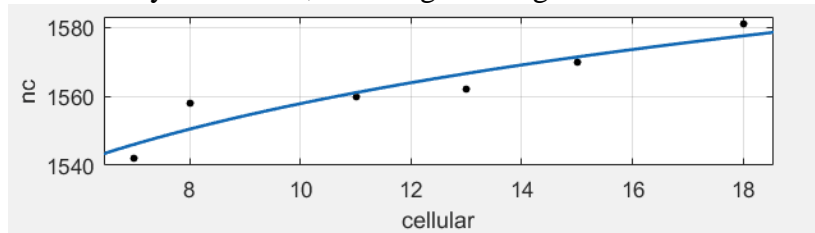


Figure 3 the relationship between **nc** and the number of cellular on heavy traffic condition

And the regression model:

$$nc = 1483cellular^{0.02229}$$

$$R^2 = 0.8903$$

Given $B = 8, L = 3$, during the heavy traffic time, throughout can be calculated in the equation shown below:

$$N_1 = 2 * nc = 2980\left(\frac{h_1+h_2}{5}\right)^{0.025}$$

Given

$$B = 12, L = 4$$

Simulating the vehicles moving in half an hour of the heavy traffic time, the curve and model are shown below:

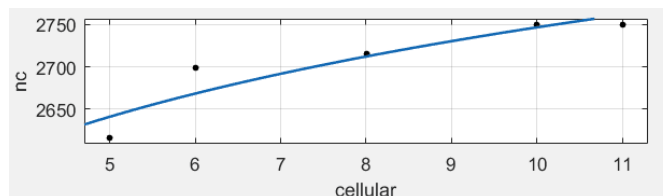


Figure 4. The relationship between **nc** and the number of cellular based in different values of **B** and **L**

$$nc = 2412cellular^{0.05643}$$

$$R^2 = 0.8874$$

In summary, the universal model between maximum N_1 and h_1, h_2 is presented as follow:

$$N_1 = a\left(\frac{h_1+h_2}{5}\right)^b$$

Where:

The values of a , b depend on B and L .

Taking statistic data from one toll highway in New Jersey for several days, we were able to get the scatter diagram as followed:

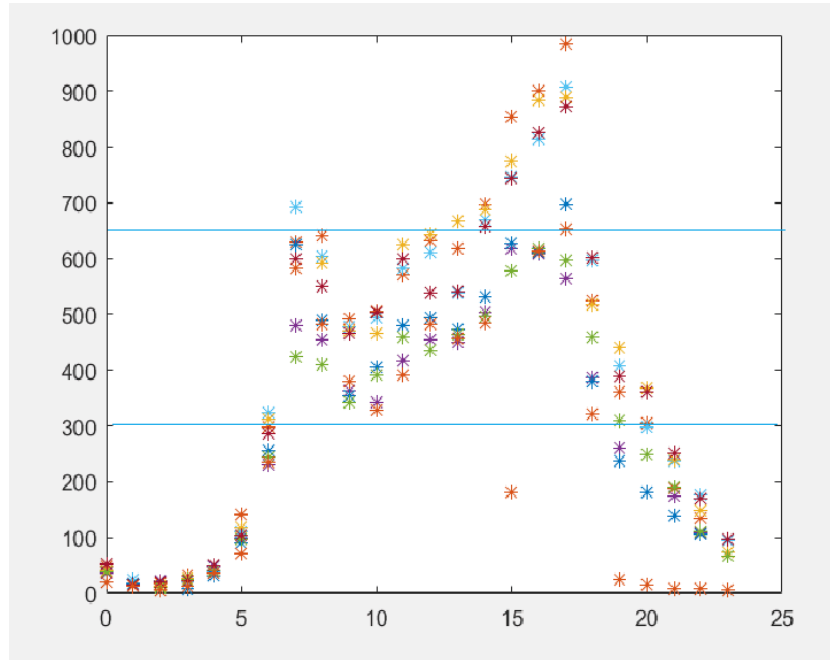


Figure 5. The scatter diagram on one-day-throughout of one certain toll highway in New Jersey
According to the scatter diagram, we determine:

$$t_1 = 0.12$$

$$t_2 = 0.42$$

$$t_3 = 0.46$$

3.1.2 Accident prevention rate

Two main factors contribute to accident. The first one is that the safe distance is too short. We have already taken this factor into consideration when design the length of the cellular. The second one is the angle between the side edge of Zone E and the direction of the highway lane, which is defined as θ . With the decrease of the value of x , which equals to $\tan \theta$, the driver would be safer. Otherwise, the driver may have the sense of drift, which may cause drivers and passengers feeling uncomfortable and endanger security of driving [5].

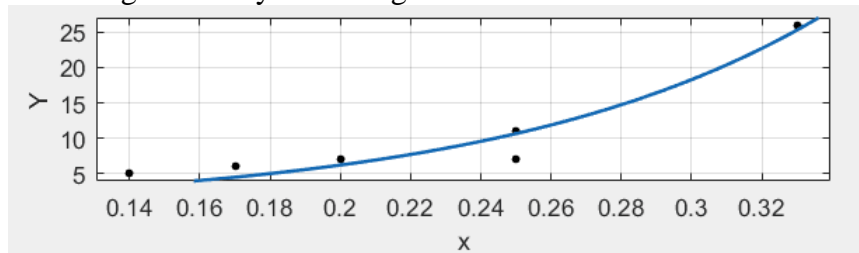


Figure 6 the relationship between the number of accidents happened per year (Y) and x

After regression analysis, the specific regression model between the number of accidents happened per year (Y) and x is showed as follow:

$$Y = 0.07133e^{10.81x}$$

The correlation coefficient of the model is

$$R^2 = 0.9367$$

Thus, the model between x and Y is fine because of its high relevance. According to the regression curve and model, Y has positive correlation with x . Excessive x could lead to the length of Zone D inadequate, in another word, the visual range to judge the vehicle security is not met the standard. It cannot meet the safety requirements of accelerating and lane changing. Thus, the accident may happen.

The accident prevention rate λ has negative correlation with Y . In order to simplify the calculation, we define:

$$\lambda = \frac{1}{Y}$$

x is related to h_2, B, L and q and can be calculated in the equation shown below:

$$x = \frac{(B-L)q}{2h_2}$$

Finally, we can get the equation as followed:

$$\lambda = \frac{1}{2.206e^{6.867(\frac{(B-L)q}{2h_2})}}$$

3.1.3 Construction cost

Land and road construction are expensive, thus, we should take cost into consideration. Total cost W can be presented as:

$$W = SM$$

S is the surface area of the extra road constructed because of the build of the toll system, in another word, it is the surface area of the shadowed Zone D_1, D_2, E_1, E_2 . It can be calculated in the equation shown below:

$$S = \left(H_1 + \frac{H_2}{2}\right)(B-L)q$$

Where:

M is the construction cost of per unit area.

Finally, we can get the equation as followed:

$$W = \left(H_1 + \frac{H_2}{2}\right)(B-L)qM$$

3.1.4 Comprehensive evaluation index

In order to analyze the performance of the new designed fan-in area, we defined an evaluation index I , which is presented as follow:

$$I = k_1 \frac{N_{max} - N(h_1, h_2)}{N_{max} - N_{min}} + k_2 \frac{\lambda_{max} - \lambda(h_1, h_2)}{\lambda_{max} - \lambda_{min}} + k_3 \frac{W(h_1, h_2) - W_{min}}{W_{max} - W_{min}}$$

Where:

$N(h_1, h_2)$, $\lambda(h_1, h_2)$ and $W(h_1, h_2)$ indicate the throughput, accident prevention rate and the total cost respectively when the value of h_1 and h_2 are given.

N_{max} , λ_{max} and W_{max} , (N_{min} , λ_{min} and W_{min}) are the maximum (or the minimum) value of throughput, accident prevention rate and the total cost when the certain ranges of h_1 and h_2 are given.

k_1 is the weight of throughput.

k_2 is the weight of accident prevention.

k_3 is the weight of cost.

The specific values of k_1, k_2, k_3 is determined by the certain circumstance. The smaller I is, the better performance of the model has.

3.2 Analysis of the results

Given the condition as followed:

$$B = 8, L = 3, q = 3m, M = 8000 \text{ dollar}/m^2$$

$$k_1 = 1.4, k_2 = 1.6, k_{13} = 2.8$$

Applying Matlab make the three-dimension figure of h_1 (presented as x in Fig) and h_2 (presented as y in Fig). The the certain ranges of h_1 and h_2 are determined by experience.

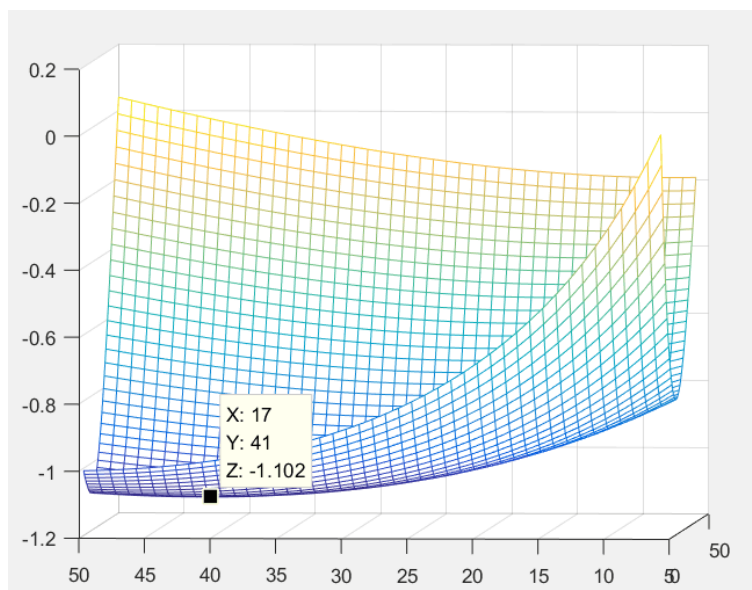


Figure 7 the three-dimension figure of I , h_1 (presented as x in Fig) and h_2 (presented as y in Fig). According to the Fig, when $h_1=17m$ and $h_2=41m$, we can obtain a minimum value of E , in another word, the optimal values of h_1 and h_2 are 17m and 41m.

4. Conclusion

We applied cellular-automaton approach to simulate the vehicle's moving pattern in order to discuss how h_1 and h_2 affect the throughput; taking data from varied sources, we were able to figure out how h_1 and h_2 affect the accident prevention rate and the cost.

Using analytic hierarchy process, we defined an evaluation index to analyze the performance of the new designed fan-in area, this index combined with the throughput, accident prevention rate as well as the cost.

According to the model above, when given the values of B , L , M , q , we can get the values of h_1 , h_2 . Based on the values of h_1 and h_2 , the shape and size of the fan-in area is determined. The values of h_1 and h_2 set the area where the vehicles should go straight and where the vehicles can merge, so that the merging pattern of the car also depends on them. Solving the model we can get the optimal values of h_1 and h_2 given the values of B , L , M , q . In accordance with the strategy above to build the toll plaza, the throughput, accident prevention rate as well as the cost will meet the design requirements as far as possible.

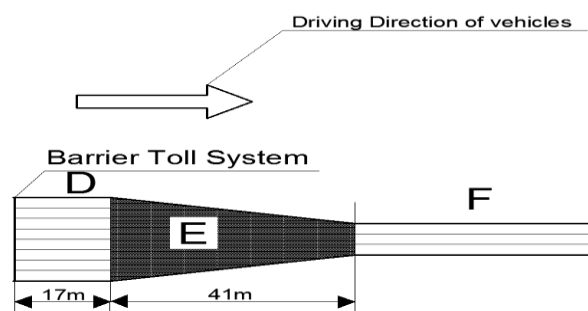


Figure 8 sketch map of the optimal solution

References

- [1] https://en.wikipedia.org/wiki/Toll_road
- [2] Wu xiaowu. The search the on the transportation security of the highway toll plaza [D]. Chang'An University.
- [3] Lvwen Zhou. Matlab code for MCM 2005 problem B.