

Application of Greedy Random Adaptive Search Algorithm (GRASP) in Flight Recovery Problem

Wang Shaochang

School of Computer Science and Engineering
Xi'an Technological University
Xi'an, 710021, Shaanxi, China
e-mail: 1163401315@qq.com

Yang Weixia

School of Computer Science and Engineering
Xi'an Technological University
Xi'an, 710021, Shaanxi, China
e-mail: 1195862787@qq.com

Xu Fei

School of Computer Science and Engineering
Xi'an Technological University
Xi'an, 710021, Shaanxi, China
e-mail: 29112462@qq.com

Ma Zhe

School of Computer Science and Engineering
Xi'an Technological University
Xi'an, 710021, Shaanxi, China
e-mail: 1429462700@qq.com

Abstract—With the rapid growth of air transportation, capital is becoming increasingly scarce, and the abnormal situation of flight is becoming more and more serious. Irregular flights have become popular in society, and it is also a great difficulty for airlines. Flight recovery is a classic NP problem. It is of great theoretical significance and practical value to study flight restoration problem. The punctuality of the airline's schedule is a key factor in retaining current customers and attracting new passengers. However, because the civil aviation transportation system is very complex, many reasons will cause the flight plan can not be carried out normally. Weather, air traffic flow control, airport security check, passenger's own reasons and temporary shortage of crew cause the flight can't be executed normally, that is, abnormal flight or flight interruption. Flight interruption will affect the normal operation of airlines. Some flights have to be cancelled or delayed, which will cause huge economic losses to airlines. Besides, the delay or cancellation of flights will cause great inconvenience to passengers and affect the reputation of airlines. The operation control and management level of abnormal flights has attracted more and more attention from domestic airlines. Optimization control and algorithm design have also become a hot topic in the research of abnormal flights in China. Based on the further understanding of the NP problem, this paper verifies the feasibility of the greedy random adaptive search algorithm GRASP algorithm in the NP problem solving process under the flight recovery problem model. According to the analysis, the resource allocation model is established to verify the shortcomings of Lagrange relaxation algorithm (LRS) in flight recovery problem. Meanwhile, the greedy random adaptive search algorithm (GRASP) is used to solve the model, and the new flight schedule is obtained. Through the experimental results, the feasibility of the algorithm is proved in the error range.

Keywords—Light Recovery; NP Problem; LRS Algorithm; GRASP Algorithm; Modeling

I. THE PROBLEM BACKGROUND

As is known to all, there are many interesting problems in computer field, such as salesman problem, packaging problem, partner problem, etc., and they are all belong to NP problem. The flight scheduling problem is also one of the classic NP problems. In the case of simple flight recovery, it's essentially a part of the operational recovery problem. In a broad sense, flight recovery is operation recovery. It includes narrow flight recovery, crew recovery and rescheduling of passenger trips, which are bound together to form an overall super-sized operational optimization problem. The difficulty of flight recovery is mainly due to the immediacy of the recovery programme, except for the complexities involved. After the flight disturbance, the decision and implementation of the recovery plan is the sooner the better. In the case of manual adjustment, operator can only think of some basic factors affecting the flight safety, it is difficult to take into account the global network optimization, not to mention the passenger trip plan or according to the value of passenger flight information to determine the priority of the recovery.

In the literature [1], Danzig-Wolfe algorithm was used to solve the multi-commodity flow model of abnormal flight passenger trips. The correctness and validity of the algorithm is verified by a classical example. According to the literature [2], a deep priority algorithm is proposed to construct all feasible trips. By simplex method, the model algorithm can quickly and efficiently restore the passenger flow, and can reduce the loss greatly. In the literature [3], a heuristic method is used to solve the problem and the feasibility is proved. In the literature [4], the timetable recovery model and algorithm of the airline are proposed. Literature [5] proposed a mathematical model for the simultaneous recovery of airline flights and passengers. In the literature [6], Lagrangian relaxation method is used to relax the task constraint and equipment constraint in the model. However,

the LRS algorithm has some shortcomings in solving the problem, which will be explained in detail in the following sections.

II. MATHEMATICAL MODEL

A. Problems to be solved

1) The maximum delay time of the flight is 5 hours, which means that the flight will be cancelled after more than 5 hours. With a decision unit at 10 minutes interval, then there are 30 delay decisions for one flight.

2) Aircraft replacement is to arrange flights to other planes for execution, which are different from the original plan. Aircraft replacement does not need to be carried out between identical planes, and is generally arranged for any aircraft belonging to the same family or the same aircraft.

3) The minimum interval is 45 minutes.

4) The earliest flight delay cannot be delayed earlier than the original planned departure time.

5) Flight time for each flight is equal to the arrival time in flight data minus departure time in flight data.

6) To make sure that every single plane is connected to the end of the plane, which means that the first flight to the airport has to be the same as the next flight, and that the time between the arrival and the flight of the first flight is 45 minutes.

7) The first flight of all aircraft has to meet the following two conditions: the plane's departure airport is the same as the departure airport of the flight, and the flight time is no longer than the earliest available time of flight.

8) The arrival time of the last flight of all aircraft cannot be later than the latest available time of the aircraft.

9) The decision time interval for flight delay is 10 minutes, regardless of the capacity of the airport. Fellow travelers are passengers who book together and travel in exactly the same way. They share the same passenger number and consider it as a whole, which means they can't take different flights.

10) All flights, including the airport's OVS during the closing time, their delays require consideration. To the greatest possible protection flight, try not to cancel the flight.

11) Due to the impact of the snowstorm, the management decided to close the airport OVS between 18:00 and 21:00 on April 22, 2016. The airport can't take off or land on any flight at the time of the hour, and every flight before that time is in a normal state, and the airport is immediately back to normal after that time period. All flights scheduled to take off between 18:00 and 21:00 (not including 18:00 and 21:00) on that day need to be rescheduled, and their rearrangement may result in rescheduling of other flights after closure.

12) The runway at OVS airport is limited to five aircraft in five minutes, and five planes to land at the same time.

Considering the passenger capacity of the aircraft, it is assumed that the cost of adjusting the flight between different types of machines is not only delayed by half an hour but also the cost of the passengers (We still don't think about the passenger's journey, assuming that the passenger's schedule is all right, and assuming that all flights are 100% full). For example, aircraft DIBPV has a capacity of 140

people, and COBPV has 170 passengers. If the aircraft COBPV is distributed to DIBPV, 30 passengers will be unable to board because there are no seats available. However this is not the case if the original planned flight of DIBPV is assigned to the COBPV. Suppose a passenger is unable to board a plane that costs about two hours' delay, how do you reschedule the flight to ensure the shortest amount of delays?

B. Question assumptions

1) Assume that each flight is not renamed;

2) Assume that only the minimum cost of the recovery system is considered and all flights are treated equally;

3) Assume that the crew is not equipped;

4) Assume that there is no fault plane flying normally, it will take off and land normally;

5) Assume that the aircraft can be accelerated in the air and should fly at normal speed;

6) Assume that the aircraft will not take the channel during maintenance of the airport, other aircraft can enter the airport normally.

7) Assume that all aircraft of the same model have the same capacity, while there is no cost to adjust the flight, but there are costs to adjust between different models;

8) Assume that the added cost of a flight adjustment on a different aircraft is equivalent to a half-hour delay, and if the displacement and delay might occur at the same time, the cost added;

9) Assume that a passenger cannot board an aircraft equal to the passenger's delay of 2 hours;

10) Regardless of the capacity of the airport, all airports can theoretically work 24 hours a day.

C. Meaning of the symbols

TABLE I. NOTATION TABLE

symbols	Meaning
Z	Flight delay total time.
tp	Flight delays due to restrictions on the number of OVS runway.
tn	The actual flight departure time
tib	Flight time
ta	The previous flight arrival time
tb	The next flight flight time
ib	The current flight
F1	The maximum number of flights taken off by the OVS runway.
F2	The maximum number of flights landing slots on the OVS runway .
P	Replacement plane set
T	Collection of airport time nodes.
G	Collection of airport sink nodes.
Q	Convergent set
A	Flight edge collection, including flight delays
B	Permutation edge set
ai	The number of planes in node I.
tm	Passenger delay time
TL	Delay time that passengers can't board

D. The establishment and solution of the model

1) Analysis of problems

Problems mainly consider the plane carrying, the cost of adjusting the flight between different models is not only half an hour's delay, but also the cost of not being able to board passengers. It involves the number of flight displacements, which means resource assignment problem mainly considers three factors in model construction:

- If a plane carrying a large number of passengers is replaced by a small passenger plane some passengers will overflow, and some passengers will not be able to register because of the number of passengers.
- When flight replacement is carried out by different models, it is necessary to find a flight with a higher passenger volume matching degree;
- A passenger could not board the plane at about the same cost as the passenger's delay of 120 minutes.

First of all, analyze the number of planes affected by the flight replacement, statistical analysis of the passenger capacity of these aircraft, to provide data for the model of problem one. Secondly, we should analyze the optimal matching degree of different flight replacement and try to get all passengers to board. Finally, the flight plan is to be made, while the passenger has the shortest amount of delay, and the optimal solution to the problem.

2) Problem model establishment

a) Establishment of objective function

$$\min Z = \sum_i \left[\sum_{i,t_n} (x_{i,t_n} t_n - t_{i_b}) + t_p \right] + \sum_i x_{i,t_n} T_m T_L \quad (1)$$

The final result of the problem requires that passengers have the shortest delay time. At the same time, the matching degree of flight replacement is the best, and the cost of adjusting the flight between different models is not only half an hour's delay, but also the cost of not being able to board passengers. There are two situations in which the objective function is easy to obtain:

Z means the total time of flight delay;

$$\sum_{i,t_n} (x_{i,t_n} t_n - t_{i_b})$$

means the delay time of the flight being closed by the airport OVS;

Tp represents the delay time affected by the number of landing slots;

$$\sum_{i_b} x_{i_b,t_n} T_m T_L N$$

means the cost of passengers who cannot board the plane;

N means the number of non-boarding that is generated by a small airline Pa replacing large flight Pb;

Tm means passenger delay time;

TL means a delay time for a passenger who can't board the plane;

b) Establishment of constraint conditions

- Due to the limitation of runway at OVS airport, the airport can only take off five planes at a maximum of five minutes every five minutes;
- The airport OVS closing time will close the airport between 18:00 and 21:00 on April 22, 2016, so the normal take-off and landing of some flights will be subject to time constraints;
- To make sure that every single plane is connected to the end of the plane, which means that the first flight to the airport has to be the same as the next flight, and that the time between the arrival and the flight of the first flight is 45 minutes.
- When two flights are replaced, the replacement of the flight with high passenger capacity is preferred. the constraint conditions of satisfaction are as follows:

$$\left. \begin{array}{l} \sum_{i,t_n} x_{i,t_n} t_n \leq F_1 \\ \sum_{i,t_n} x_{i,t_n} t_n \leq F_2 \\ s.t. \left\{ \begin{array}{l} \sum_{i,t_n} x_{i,t_n} t_n + \sum_{i,t_n} x_{i,t_n} t_n = C_{i,t_n} \\ x_{i,t_n}, x_{i,t_n} = 0 \text{ or } 1 \\ t_b - t_a \geq T \\ P - P = N \end{array} \right. \end{array} \right. \quad (2)$$

x_{i_b,t_n} is the 0-1 variable, indicating that the i th flight is 1 at the time of taking off at t_n , otherwise it is 0;

t_n means the actual departure time of the flight;

t_{i_b} means the departure time of the flight;

i_b means the current flight; $i_b \in$ flight set F;

c) Model establishment

According to the above analysis, the resource assignment model of flight recovery is established as follows:

III. GRASP ALGORITHM

According to the characteristics of the abnormal flight, the model is a multi-model flight recovery problem for the target function. The objective function in the model can be divided into two parts to solve and optimize. LRS algorithm usually can only give the solution of one model, and the algorithm is not very controllable. Model for the problem, complex, and there are two time cost in the objective function, so we will use a heuristic algorithm, greedy randomized adaptive search algorithm (GRASP), the algorithm can use a variety of computing resources to solve practical problems, helps to reduce the model solving time, improve efficiency.

Greedy randomized adaptive search algorithm is an iterative process is divided into two phases, the first stage is

the initial solution is constructed by adaptive stochastic process, the second stage is to use a local search procedure for the improvement of the initial solution. Greedy randomized adaptive search algorithm is used to construct the initial solution of the corresponding is the flight time, local search process to generate the initial solution of the corresponding improvements are a result of the carrying of the delay time, the problem of the desires of passengers overall shortest delay time is the flight time and capacity to produce the sum of the delay time.

In the initial solution construction phase, the qualified Candidate List (RCL) is released into the Restricted Candidate List. By searching RCL, the optimal solution is obtained at the optimal stage of searching. At the end of each iteration, the optimal solution is updated. If the current solution is better than the previous one, then the current optimal solution is updated, otherwise the next iteration process will be carried out. When the algorithm stops, the output is the optimal solution. Through the above analysis, we can see that the solution time of the model can be adjusted flexibly as needed. The flow chart of the non-normal flight scheduling algorithm in GRASP is shown in figure 1.

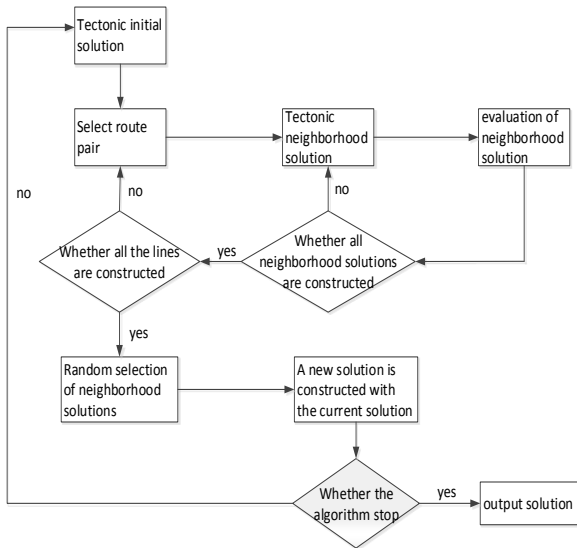


Figure 1. Flow chart of irregular flight scheduling algorithm based on GRASP

Scheduling algorithm code:

```

function [ y, position ] = c grasp( n, lb, ub, fun, maxiters,
maxnumiternoimprov, numeval, maxdirect, alfa, maxtime )
format('long','e');
fhandle = str2func(fun);
minval = Inf;
bestx = lb ;
rand('state', sum(100*clock));
t = cputime;
  
```

```

for j = 1 : numeval
x = (rand(1, 1) * (ub-lb)) + lb;
h = 1;
numiternoimprov = 0;
for iter = 1 : maxiters
x = ConstructGreedyRandomized(x, fhandle, n, h, lb,
ub, alfa);
x = LocalSearch(x, fhandle, n, h, lb, ub, maxdirect);
tempy = feval(fun, x);
if tempy < minval
bestx = x;
minval = tempy;
Num miternoimprov = 0;
else
Num iternoimprov=num iternoimprov + 1;
end
If numiternoimprov>=maxnumiternoimprov
h = h/2;
numiternoimprov = 0;
end
if maxtime > 0
curr = (cputime - t);
if (maxtime < curr)
disp(sprintf('Maximal time exceeded. Overall
time - %f sec', curr));
y = minval;
position = bestx;
return;
end
end
end
caltime = cputime - t;
single(caltime)
y = minval;
position = best x;
end
  
```

IV. SIMULATION EXPERIMENT

A. Simulation model test

The LRS algorithm is used to obtain the results shown in table2.

TABLE III. THE BEST FLIGHT REPLACEMENT TABLE FOR PASSENGERS

Flight number	departure time	New departure time	Time of arrival	New arrival time	Take off the airport	Arrive at the airport	The delay time
174774124	1461351000	1461324540	1461356760	1461330300	LEH	OVS	30
174773887	1461350100	1461324600	1461355800	1461330300	NZK	OVS	55
174773751	1461346800	1461324600	1461352500	1461330300	LLT	OVS	100
174773957	1461345900	1461324180	1461351720	1461330000	WTR	OVS	100
174773460	1461358200	1461332700	1461362700	1461337200	OVS	ZOV	25
174774298	1461342300	1461310500	1461354600	1461330000	GKS	OVS	60
174773380	1461337800	1461319740	1461348060	1461330000	MJT	OVS	145
174773432	1461358200	1461332700	1461362400	1461336900	OVS	JOG	50
174773636	1461341100	1461321180	1461349920	1461330000	KMM	OVS	144
174774076	1461355500	1461332700	1461361500	1461338700	OVS	XIR	85
174774314	1461342000	1461323400	1461348600	1461330000	HRA	OVS	170
174774048	1461354300	1461332700	1461359700	1461338100	OVS	QSM	114
174774144	1461349800	1461324900	1461355200	1461330300	XIR	OVS	64

B. Analysis of problem results

The overall delay of the problem flight was 1142 minutes. Through the experimental results, the feasibility of the algorithm is also proved in the error range.

V. CONCLUSION

The role of air transportation in world politics, business transactions and other social activities is essential, and the air transportation system is a very complex system. Various factors can lead to the failure of the whole system. Flight interruption management is a complex and challenging task. In this paper, the problem of flight recovery is analyzed and studied carefully, and the related problem model is established and the algorithm is designed. Aiming at the problem of the complexity of the model and the objective function in two time cost, the design uses a set of heuristic algorithms: greedy random adaptive search algorithm (GRASP), the algorithm can use a variety of computing resources to solve practical problems, help to reduce the calculation time of the model to improve the efficiency.

REFERENCES

[1] Wang Ying. Research on the Problems of Abnormal Flights and Passenger Travel Restoration [D]. Nanjing University of Aeronautics and Astronautics, 2013.
 [2] Gao Qiang, Yan Jun, Lu Honglan. Remove Method of Passenger Flow in Abnormal Flights [J]. Science and Technology and Engineering, 2011,11 (27): 6670-6673.

[3] ZHAO Xiu-li, ZHU Jin-fu, GUO Mei. Models and Algorithms of Delayed Flights Dispatch [J]. Systems Engineering Theory and Practice, 2008, (04): 129-134.
 [4] Flight operations recovery: New approaches considering passenger recovery[J]. Stephane Bratu,Cynthia Barnhart. Journal of Scheduling . 2006 (3)
 [5] Simultaneous recovery model for aircraft and passengers[J] . Niloofar Jafari, Seyed Hessameddin Zegordi. Journal of the Franklin Institute . 2010
 [6] Corning, WU Xiaoyue, Zhang Guoting. Lagrange Heuristic Algorithm For Alarm Control And Ccontrol Control [J] .Actaalie and Command Control, 2012,37 (08): 104-107.
 [7] LUO Rong-qin, ZHAO Xiao-mei, BI Jun, ZHANG Jun. An Integer Programming Model of Delayed Flights Rearrangement Based on Comprehensive Flight Factors [J] .Transportation Research, 2017,3 (03): 36-42.
 [8] Pacheco A V F, Ribeiro G M, Mauri G R. A Grasp with Path-Relinking for the Workover Rig Scheduling Problem[J]. International Journal of Natural Computing Research, 2017, 1(2):1-14.
 [9] WU Gang, YAN Jun. An Improved Column Generation Algorithm for Uneven Flight Recovery [J]. JOURNAL OF NANJING UNIVERSITY OF AERONAUTICS, 2014,46 (02): 329-334.
 [10] ZHAO Xiaomei, BI Jun, WANG Yongxing, ZHANG Jun. Aircraft Plan Recovery Model for Unnormal Airlines Considering Multi-Factors [J] .Transportation Research, 2017,3 (02): 52-60.
 [11] Li Ning, Mou Deyi. Uncertain programming method for unit recovery [J]. Journal of Cangzhou Teachers College, 2017,33 (02): 10-13 + 23.
 [12] SUN Cheng-hao, WANG Wan-zhen, ZHOU Run. Stochastic Programming Method for Aircraft Recovering Decision of Unregulated Flights [J]. Shandong Industry Technology, 2017, (12): 262-263.